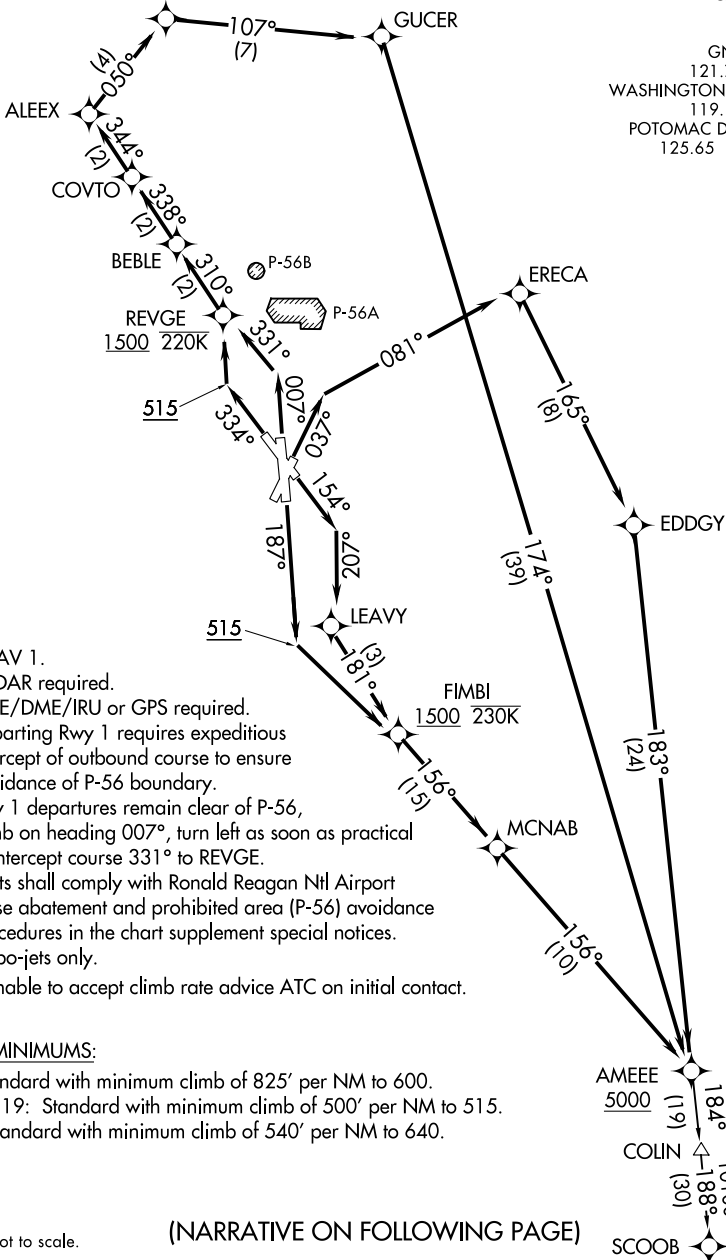


AMEEE ONE DEPARTURE (RNAV)

**TOP ALTITUDE:**  
**5000**

DOGUE  
4000 250K

D-ATIS  
132.65  
CLNC DEL  
128.25  
CPDLC  
GND CON  
121.7 257.6  
WASHINGTON TOWER  
119.1 257.6  
POTOMAC DEP CON  
125.65 348.725



- NOTE: RNAV 1.
- NOTE: RADAR required.
- NOTE: DME/DME/IRU or GPS required.
- NOTE: Departing Rwy 1 requires expeditious intercept of outbound course to ensure avoidance of P-56 boundary.
- NOTE: Rwy 1 departures remain clear of P-56, climb on heading 007°, turn left as soon as practical to intercept course 331° to REVGE.
- NOTE: Pilots shall comply with Ronald Reagan Ntl Airport noise abatement and prohibited area (P-56) avoidance procedures in the chart supplement special notices.
- NOTE: Turbo-jets only.
- NOTE: If unable to accept climb rate advice ATC on initial contact.

TAKEOFF MINIMUMS:

- Rwy 1: Standard with minimum climb of 825' per NM to 600.
- Rwy 4, 15, 19: Standard with minimum climb of 500' per NM to 515.
- Rwy 33: Standard with minimum climb of 540' per NM to 640.

NOTE: Chart not to scale.

(NARRATIVE ON FOLLOWING PAGE)

AMEEO ONE DEPARTURE (RNAV)

NE-3, 20 FEB 2025 to 20 MAR 2025

NE-3, 20 FEB 2025 to 20 MAR 2025



DEPARTURE ROUTE DESCRIPTION

TAKEOFF RUNWAY 1: Climb on heading 007° to intercept course 331° to REVGE, cross REVGE at or above 1500 and at or below 220K, then on track 310° to BEBLE, then on track 338° to COVTO, then on track 344° to ALEEX, then on track 050° to DOGUE, cross DOGUE at or above 4000 and at or below 250K, then on track 107° to GUCER, then on track 174° to AMEEE, cross AMEEE at or above 5000, thence....

TAKEOFF RUNWAY 4: Climb on heading 037° to intercept course 081° to ERECA, then on track 165° to EDDGY, then on track 183° to AMEEE, cross AMEEE at or above 5000, thence....

TAKEOFF RUNWAY 15: Climb on heading 154° to intercept course 207° to LEAVY, then on track 181° to FIMBI, cross FIMBI at or above 1500 and at or below 230K, then on track 156° to MCNAB, then on track 156° to AMEEE, cross AMEEE at or above 5000, thence....

TAKEOFF RUNWAY 19: Climb on heading 187° to 515, then direct FIMBI, cross FIMBI at or above 1500 and at or below 230K, then on track 156° to MCNAB, then on track 156° to AMEEE, cross AMEEE at or above 5000, thence....

TAKEOFF RUNWAY 33: Climb on heading 334° to 515, then direct REVGE, cross REVGE at or above 1500 and at or below 220K, then on track 310° to BEBLE, then on track 338° to COVTO, then on track 344° to ALEEX, then on track 050° to DOGUE, cross DOGUE at or above 4000 and at or below 250K, then on track 107° to GUCER, then on track 174° to AMEEE, cross AMEEE at or above 5000, thence ....

....on assigned transition. Maintain 5000. Expect clearance to filed altitude within 10 minutes after departure.

COLIN TRANSITION (AMEEE1.COLIN):

SCOOB TRANSITION (AMEEE1.SCOOB):

NE-3, 20 FEB 2025 to 20 MAR 2025

NE-3, 20 FEB 2025 to 20 MAR 2025