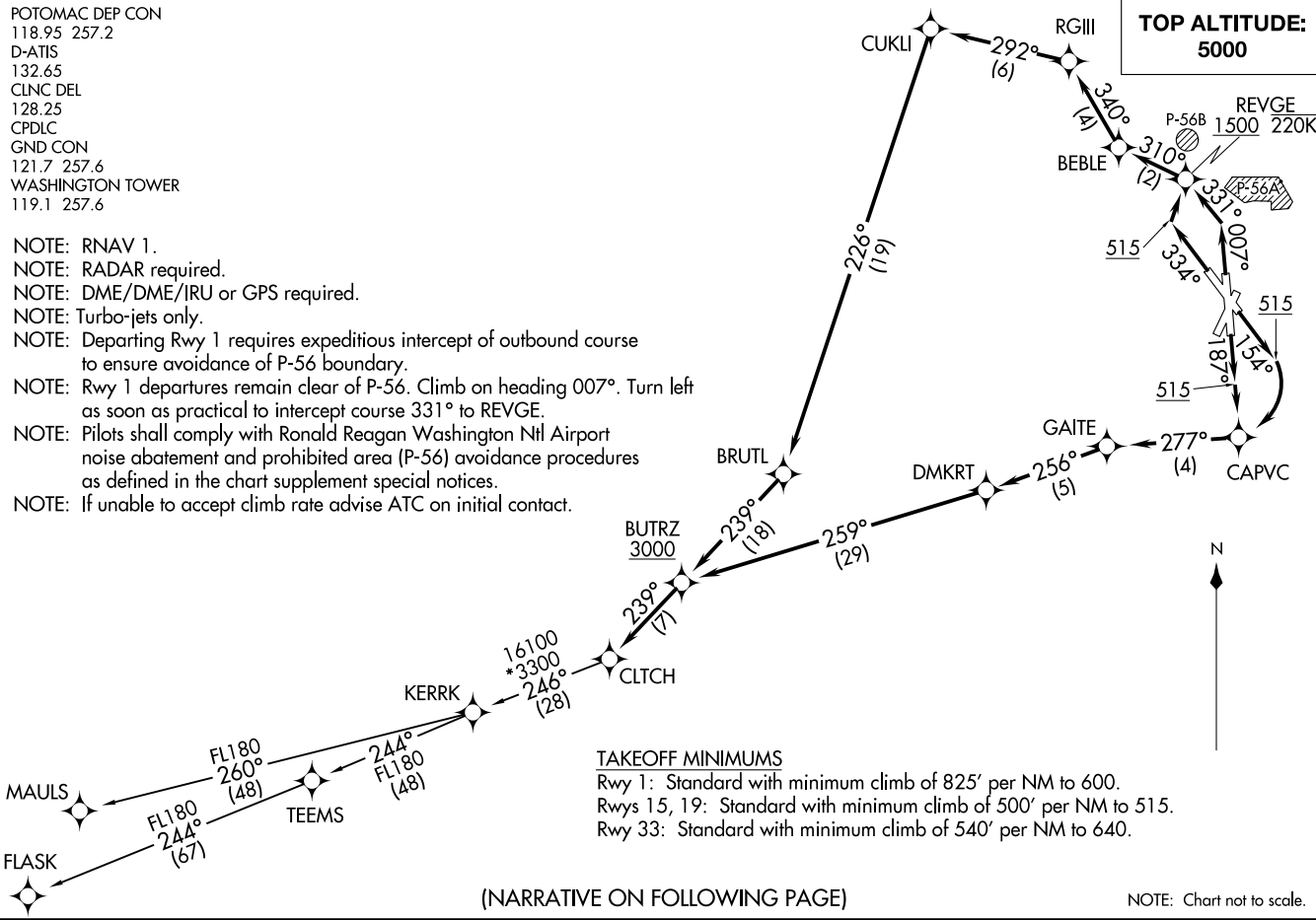


CLTCH THREE DEPARTURE (RNAV)  
 (CLTCH3 CLTCH) 31DEC20

POTOMAC DEP CON  
 118.95 257.2  
 D-ATIS  
 132.65  
 CLNC DEL  
 128.25  
 CPDLC  
 GND CON  
 121.7 257.6  
 WASHINGTON TOWER  
 119.1 257.6

- NOTE: RNAV 1.
- NOTE: RADAR required.
- NOTE: DME/DME/IRU or GPS required.
- NOTE: Turbo-jets only.
- NOTE: Departing Rwy 1 requires expeditious intercept of outbound course to ensure avoidance of P-56 boundary.
- NOTE: Rwy 1 departures remain clear of P-56. Climb on heading 007°. Turn left as soon as practical to intercept course 331° to REVGE.
- NOTE: Pilots shall comply with Ronald Reagan Washington Ntl Airport noise abatement and prohibited area (P-56) avoidance procedures as defined in the chart supplement special notices.
- NOTE: If unable to accept climb rate advise ATC on initial contact.

RONALD REAGAN WASHINGTON NTL (DCA)  
 WASHINGTON, DC



**TOP ALTITUDE:**  
**5000**

(NARRATIVE ON FOLLOWING PAGE)

NOTE: Chart not to scale.

CLTCH3 CLTCH) 24193  
 CLTCH THREE DEPARTURE (RNAV)

RONALD REAGAN WASHINGTON NTL (DCA)  
 WASHINGTON, DC  
 AL-443 (FAA)

(CLTCH3.CLTCH) 21112

# CLTCH THREE DEPARTURE (RNAV)

RONALD REAGAN WASHINGTON NTL (DCA)  
WASHINGTON, DC  
AL-443 (FAA)



## DEPARTURE ROUTE DESCRIPTION

**TAKEOFF RUNWAY 1:** Climb on heading 007° to intercept course 331° to REVGE, cross REVGE at or above 1500 and at or below 220K, then on track 310° to BEBLE, then on track 340° to RGIII, then on track 292° to CUKLI, then on track 226° to BRUTL, then on track 239° to BUTRZ, cross BUTRZ at or above 3000, then on track 239° to CLTCH, thence . . . .

**TAKEOFF RUNWAY 15:** Climb on heading 154° to 515, then right turn direct CAPVC, then on track 277° to GAITE, then on track 256° to DMKRT, then on track 259° to BUTRZ, cross BUTRZ at or above 3000, then on track 239° to CLTCH, thence . . . .

**TAKEOFF RUNWAY 19:** Climb on heading 187° to 515, then direct CAPVC, then on track 277° to GAITE, then on track 256° to DMKRT, then on track 259° to BUTRZ, cross BUTRZ at or above 3000, then on track 239° to CLTCH, thence . . . .

**TAKEOFF RUNWAY 33:** Climb on heading 334° to 515, then direct REVGE, cross REVGE at or above 1500 and at or below 220K, then on track 310° to BEBLE, then on track 340° to RGIII, then on track 292° to CUKLI, then on track 226° to BRUTL, then on track 239° to BUTRZ, cross BUTRZ at or above 3000, then on track 239° to CLTCH, thence . . . .

. . . . on assigned transition. Maintain 5000. Expect clearance to filed altitude within ten (10) minutes after departure.

FLASK TRANSITION (CLTCH3.FLASK)

MAULS TRANSITION (CLTCH3.MAULS)

NE-3, 20 FEB 2025 to 20 MAR 2025

NE-3, 20 FEB 2025 to 20 MAR 2025

CLTCH THREE DEPARTURE (RNAV)  
(CLTCH3.CLTCH) 31DEC20

WASHINGTON, DC  
RONALD REAGAN WASHINGTON NTL (DCA)