

LOC/DME I-ASO <b>109.9</b> Chan <b>36</b>	APP CRS <b>149°</b>	Rwy Idg TDZE <b>13</b> Apt Elev <b>14</b>	<b>6869</b>
---	------------------------	---	-------------

# LDA Y RWY 19

## RONALD REAGAN WASHINGTON NTL (DCA)

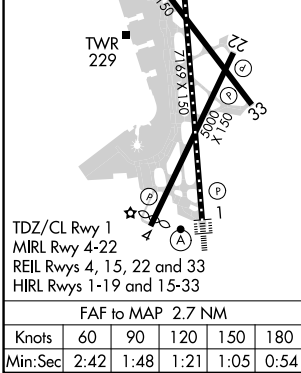
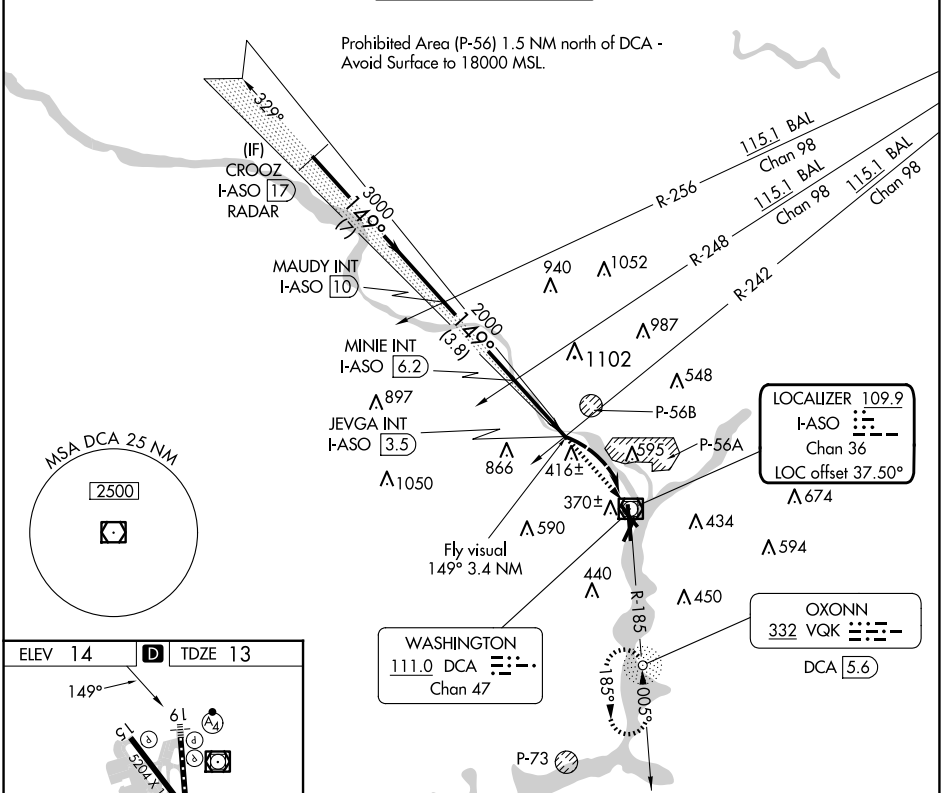
RADAR required for procedure entry. ADF or DME required.

**⚠** Circling NA northeast of Rwy 15-33. Inop table does not apply.  
**⚠** Rwy 19 helicopter visibility reduction below 1 SM NA.

MALSF

MISSED APPROACH: Climb to 1800 direct DCA VOR/DME and on DCA VOR/DME R-185 to OXONN NDB/DCA 5.6 DME and hold.

D-ATIS <b>132.65</b>	POTOMAC APP CON <b>119.85 239.25</b> (WEST/SOUTH) <b>124.2 360.8</b> (EAST)	WASHINGTON TOWER <b>119.1 257.6</b>	GND CON <b>121.7 257.6</b>	CLNC DEL <b>128.25</b>	CPDLC
-------------------------	---	--	-------------------------------	---------------------------	-------



CROOZ I-ASO 17 RADAR	MAUDY INT I-ASO 10	MINIE INT I-ASO 6.2	JEVGA INT I-ASO 3.5	Fly visual 149° 3.4 NM										
1800	DCA	DCA R-185	VQK											
<table border="1"> <tr> <td>3000</td> <td>3000</td> <td>2000</td> <td></td> <td></td> </tr> <tr> <td>7 NM</td> <td>3.8 NM</td> <td>2.7 NM</td> <td>3.4 NM</td> <td></td> </tr> </table>					3000	3000	2000			7 NM	3.8 NM	2.7 NM	3.4 NM	
3000	3000	2000												
7 NM	3.8 NM	2.7 NM	3.4 NM											
CATEGORY	A	B	C	D										
S-LDA 19		1100-3	1087 (1100-3)											
<b>C</b> CIRCLING		1100-3	1086 (1100-3)											

NE-3, 20 FEB 2025 to 20 MAR 2025

NE-3, 20 FEB 2025 to 20 MAR 2025