

NUMMY THREE ARRIVAL

WASHINGTON, DC

NE-3, 20 FEB 2025 to 20 MAR 2025

ARRIVAL ROUTE DESCRIPTION

BUCKO TRANSITION (BUCKO.NUMMY3): From over BUCKO on ESL R-282 to ESL VOR/DME, then on ESL R-103 to DRUZZ, then on AML R-297 to AML VOR/DME.

Landing DCA Rwy 1, 4, 33, ADW Rwys 1L, 1R, and DAA: From over AML VOR/DME on AML VOR/DME R-130 to cross NUMMY at 6000, then on heading 187°, expect radar vectors to final approach course.

Landing DCA Rwys 15, 19, 22 and ADW Rwys 19L, 19R: Depart AML VOR/DME on heading 070°, expect radar vectors to final approach course.

POTOMAC APP CON
118.675 323.175
DCA D-ATIS 132.65
KADW D-ATIS
133.675 251.05
*KDAA ATIS
128.175

MORGANTOWN
111.6 MGW
Chan 53

KESSEL
110.8 ESL
Chan 45

FL230

HONINR
FL260

BUCKO
FL310

WEWIL
14000

DRUZZ
15000

NEVWR
12000

SEPII
11000

ARMEL
113.5 AML
Chan 82

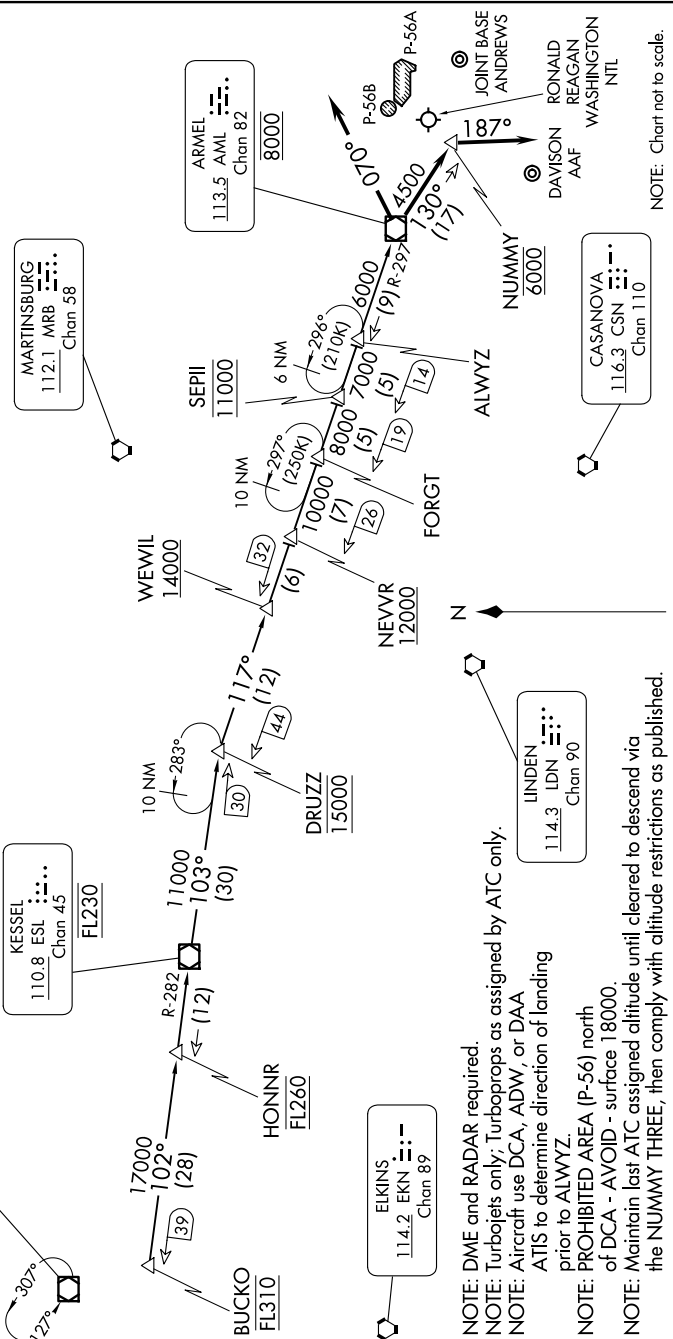
MARTINSBURG
112.1 MRB
Chan 58

EKINS
114.2 EKN
Chan 89

LINDEN
114.3 LDN
Chan 90

CASANOVA
116.3 CSN
Chan 110

NOTE: Chart not to scale.



NOTE: DME and RADAR required.
 NOTE: Turbojets only; Turboprops as assigned by ATC only.
 NOTE: Aircraft use DCA, ADW, or DAA ATIS to determine direction of landing prior to ALWYZ.
 NOTE: PROHIBITED AREA (P-56) north of DCA - AVOID - surface 18000.
 NOTE: Maintain last ATC assigned altitude until cleared to descend via the NUMMY THREE, then comply with altitude restrictions as published.

NUMMY THREE ARRIVAL

WASHINGTON, DC

NE-3, 20 FEB 2025 to 20 MAR 2025