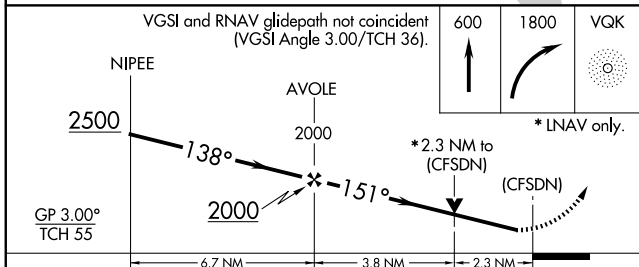
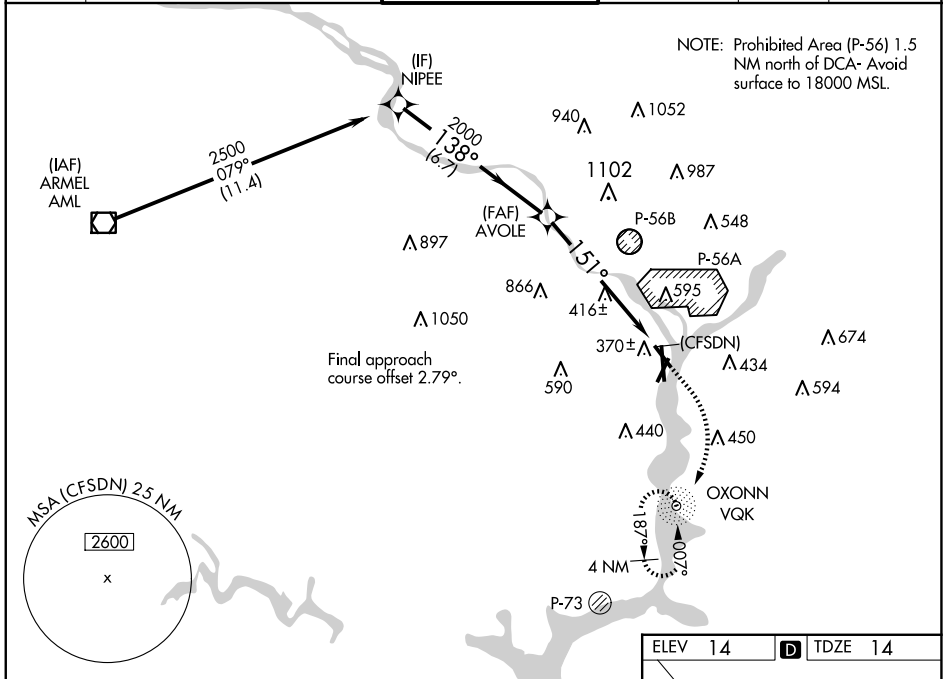


WAAS CH 70737 W15A	APP CRS 151°	Rwy Idg 5204 TDZE 14 Apt Elev 14
----------------------------------------	------------------------	-------------------------------------------------------------

RNAV (GPS) RWY 15

RONALD REAGAN WASHINGTON NTL (DCA)

RNP APCH - GPS.		MISSED APPROACH: (Do not exceed 210K until reaching 600 feet MSL) Climb to 600 then climbing right turn to 1800 direct VQK NDB and hold.		
<p>▼ Circling NA northeast of Rwy 15-33. Rwy 15 helicopter visibility reduction below ¾ SM NA. For uncompensated Baro-VNAV systems, LNAV/VNAV NA below -11°C or above 54°C.</p> <p>▲</p>				
D-ATIS 132.65	POTOMAC APP CON 119.85 239.25 (WEST/SOUTH) 124.2 360.8 (EAST)	WASHINGTON TOWER 119.1 257.6	GND CON 121.7 257.6	CLNC DEL 128.25
		CPDLC		



ELEV 14	D TDZE 14
---------	-----------

151°

600

1800

TWR 229

61

7169 X 150

500

4750

33

CATEGORY	A	B	C	D
LPV DA		395-1½	381 (400-1½)	
LNAV/VNAV DA		749-2	735 (800-2)	
LNAV MDA	800-1 786 (800-1)	800-1¼ 786 (800-1¼)	800-2½	786 (800-2½)
CIRCLING	800-1 786 (800-1)	800-1¼ 786 (800-1¼)	840-2½ 826 (900-2½)	900-3 886 (900-3)

TDZ/CL Rwy 1
MIRL Rwy 4-22
REIL Rws 4, 15, 22 and 33
HIRL Rws 1-19 and 15-33

NE-3, 20 FEB 2025 to 20 MAR 2025

NE-3, 20 FEB 2025 to 20 MAR 2025