

RNAV (RNP) RWY 1

RONALD REAGAN WASHINGTON NTL (DCA)

APP CRS	Rwy Idg	6869
007°	TDZE	14
	Apt Elev	14

▽ For uncompensated Baro-VNAV systems, procedure NA below -10°C (14°F) or above 48°C (120°F). RF required. GPS required. Missed approach requires RNP less than 1.0. For inop ALS, increase RNP 0.30 all Cats visibility to 1¼ mile.

ALSF-2

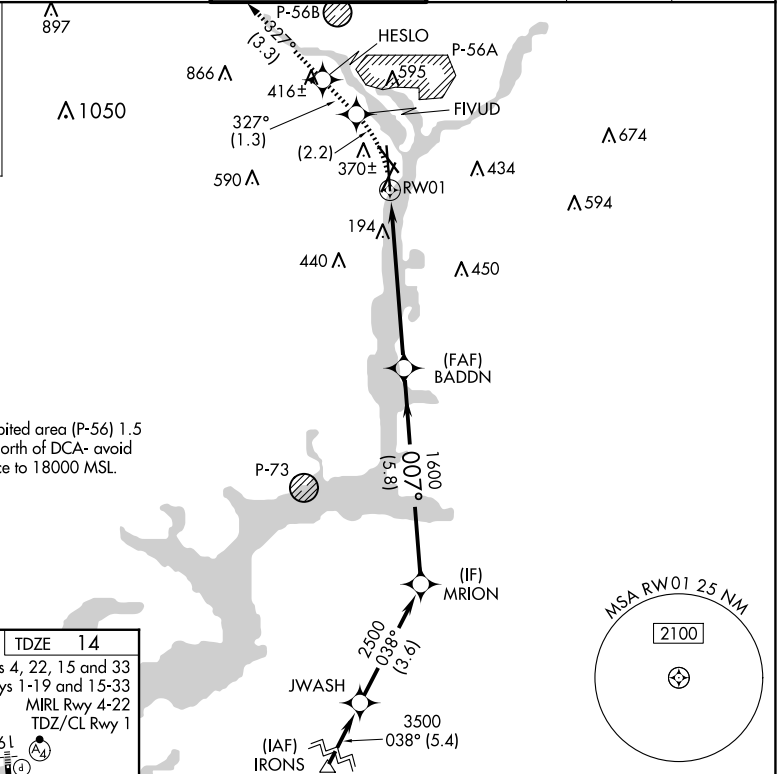
MISSED APPROACH: (Do not exceed 185K until FIVUD) Climb to 2200 left turn to FIVUD and on track 327° to HESLO and on track 327° to GTN NDB and hold.

D-ATIS	POTOMAC APP CON		WASHINGTON TOWER	GND CON	CLNC DEL	CPDLC
132.65	119.85	239.25	119.1 257.6	121.7 257.6	128.25	
	(WEST/SOUTH)					
	124.2 360.8					
	(EAST)					

MISSED APCH FIX

4 NM

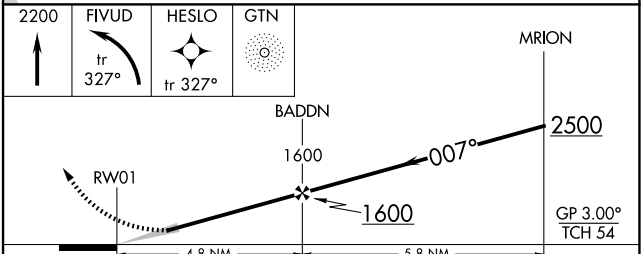
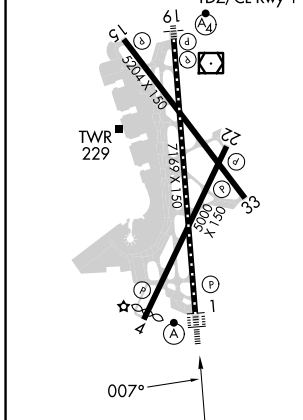
GEORGETOWN GTN



Prohibited area (P-56) 1.5 NM north of DCA- avoid surface to 18000 MSL.

ELEV 14	D	TDZE 14
---------	----------	---------

REIL Rwy 4, 22, 15 and 33
 HIRL Rwy 1-19 and 15-33
 MIRL Rwy 4-22
 TDZ/CL Rwy 1



CATEGORY	A	B	C	D
RNP 0.30 DA	552/60		538 (600-1¼)	

AUTHORIZATION REQUIRED

NE-3, 20 FEB 2025 to 20 MAR 2025

NE-3, 20 FEB 2025 to 20 MAR 2025