

APP CRS	Rwy Idg	<b>6869</b>
<b>187°</b>	TDZE	<b>13</b>
	Apt Elev	<b>14</b>

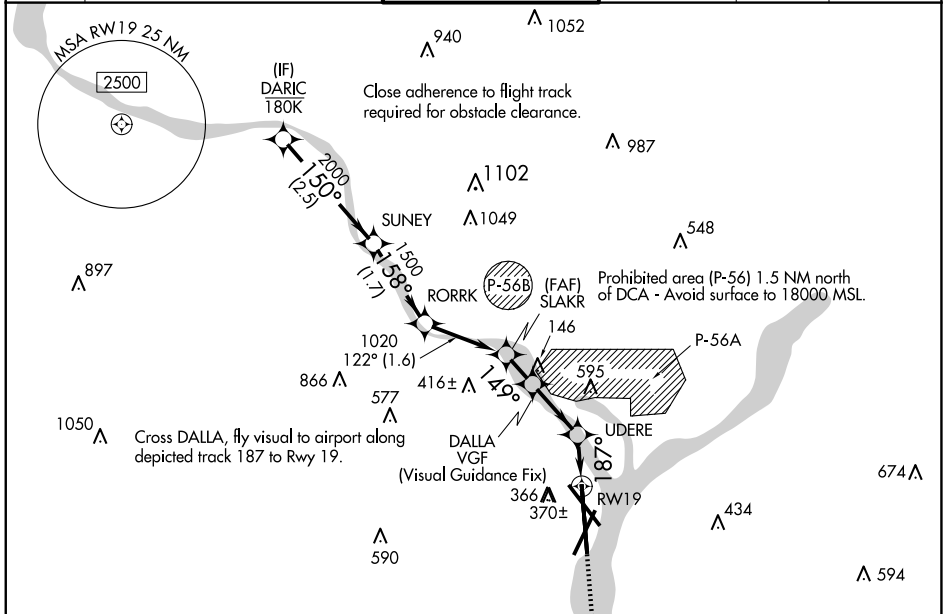
# RNAV (GPS) Y RWY 19

RONALD REAGAN WASHINGTON NTL (DCA)

RNP APCH - GPS.  
 RADAR required.  
 ▼  
 ▲ Rwy 19 helicopter visibility reduction below ¾ SM NA. Inop table does not apply.

MALSIF  
 (A)   
 MISSED APPROACH: (Do not exceed 165K until Rwy 19) Climb to 3000 on FMS lateral path to Rwy 19, then direct BADDN and hold, continue climb-in-hold to 3000. If unable to follow the FMS lateral path, climb to 3000 and turn to heading 187° direct BADDN and hold, continue climb-in-hold to 3000.

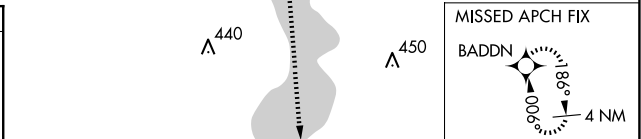
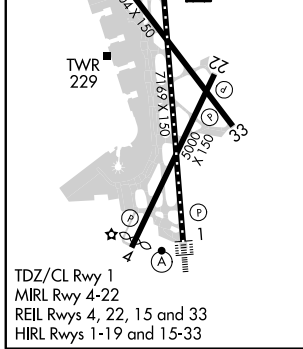
D-ATIS	POTOMAC APP CON (WEST/SOUTH)	WASHINGTON TOWER	GND CON	CLNC DEL	CPDLC
<b>132.65</b>	<b>119.85 239.25</b> <b>124.2 360.8</b> (EAST)	<b>119.1 257.6</b>	<b>121.7 257.6</b>	<b>128.25</b>	



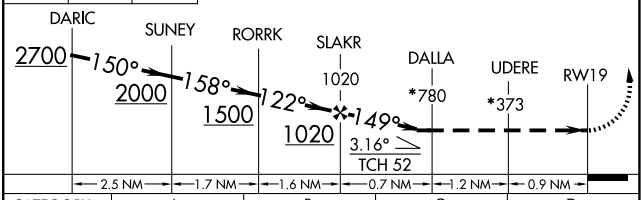
NE-3, 20 FEB 2025 to 20 MAR 2025

NE-3, 20 FEB 2025 to 20 MAR 2025

ELEV	14	<b>D</b>	TDZE	13
------	----	----------	------	----



3000 ↑ FMS Lateral to RWY19 BADDN \*Check altitude. Turns required in the visual segment.



CATEGORY	A	B	C	D
LNAV MDA	780-2½		767 (800-2½)	