

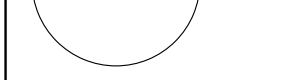
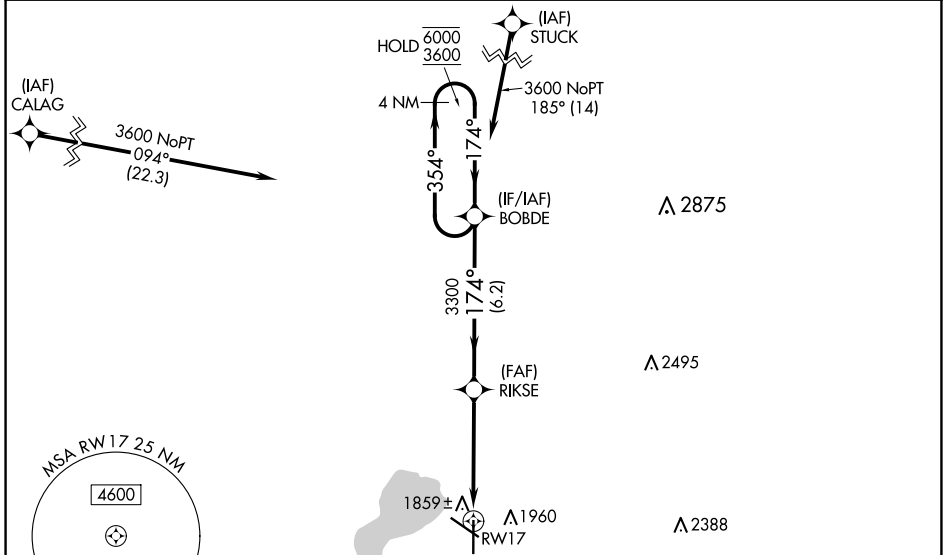
WAAS CH 82305 W17A	APP CRS 174°	Rwy Idg TDZE Apt Elev	6893 1741 1749
--	------------------------	-----------------------------	---

RNAV (GPS) RWY 17

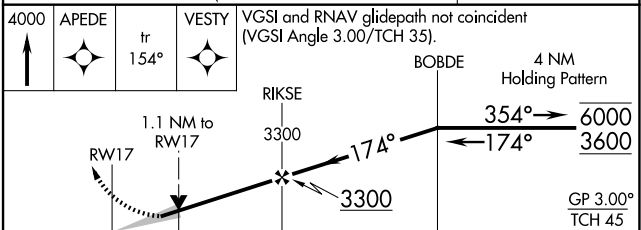
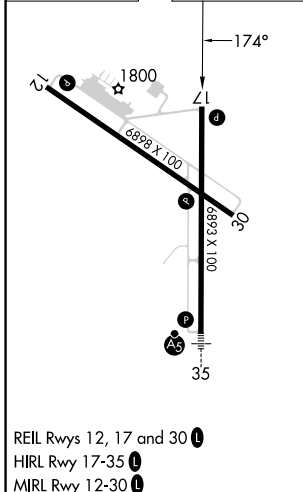
WATERTOWN RGNL (ATY)

RNP APCH - GPS.	MISSED APPROACH: Climb to 4000 direct APEDE and on track 154° to VESTY and hold.
<p>▼ For uncompensated Baro-VNAV systems, LNAV/VNAV NA below -18°C or above 54°C.</p>	

ASOS 126.625	MINNEAPOLIS CENTER 128.5 306.2	UNICOM 123.05 (CTAF) 0
------------------------	--	----------------------------------



ELEV 1749	D TDZE 1741
-----------	--------------------



CATEGORY	A	B	C	D
LPV DA	2055-7/8		314 (400-7/8)	
LNAV/VNAV DA	2130-1 1/8		389 (400-1 1/8)	
LNAV MDA	2120-1		379 (400-1)	
C CIRCLING	2260-1 511 (600-1)		2500-2 1/4 751 (800-2 1/4)	2500-2 1/2 751 (800-2 1/2)

NC-1, 20 FEB 2025 to 20 MAR 2025

NC-1, 20 FEB 2025 to 20 MAR 2025