

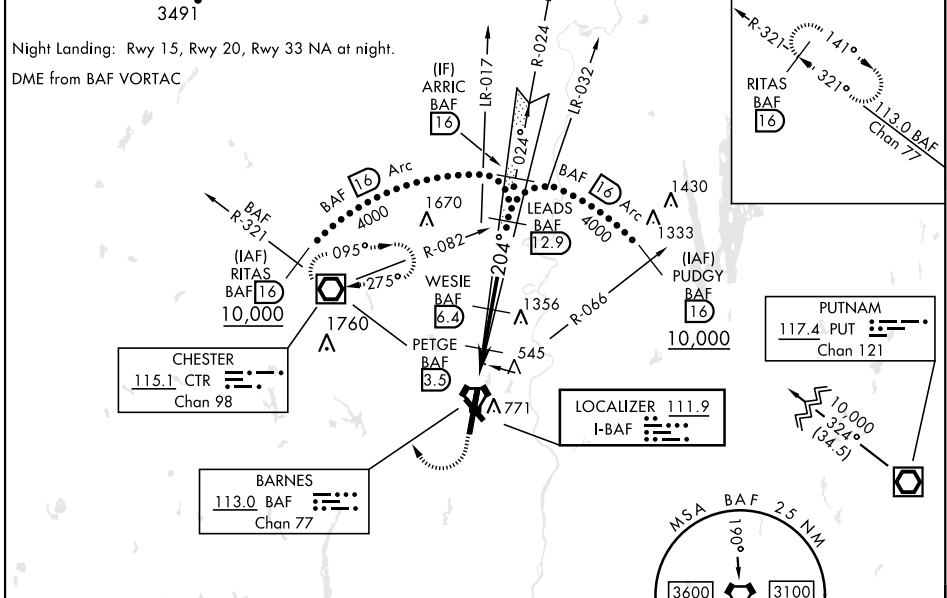
LOC I-BAF <b>111.9</b>	APCH CRS <b>204°</b>	Rwy ldg TDZE <b>8919</b> <b>270</b> Arprt Elev <b>270</b>	AL-446 [USAF]	WESTFIELD-BARNES RGNL (KBAF)
---------------------------	-------------------------	---	---------------	------------------------------

\*When ALS inop, increase CAT E vis to 1/4 miles.  
 \*\*When ALS inop, increase CAT CD vis to 1/2 miles, CAT E vis to 3 miles.

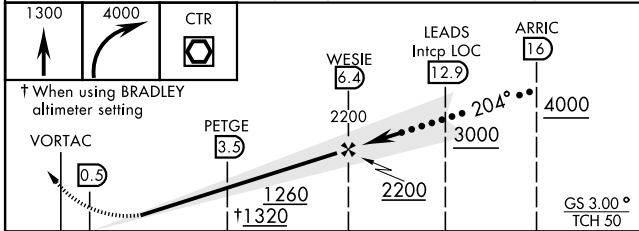
**MALS** MISSED APPROACH: Climb to 1300, then climbing right turn to 4000 direct CTR VOR/DME and hold, continue climb in hold to 4000.  
 (TACAN act climb to 1300, then climbing right turn to 4000 via hdg 010° and BAF VORTAC R-321 to RITAS and hold.)

ATIS <b>127.1 263.15</b>	BRADLEY APP CON <b>125.35 281.5</b>	WESTFIELD TOWER ★ <b>118.9 (CTAF) 0 251.1</b>	GND CON <b>121.7 289.4</b>
-----------------------------	--	--	-------------------------------

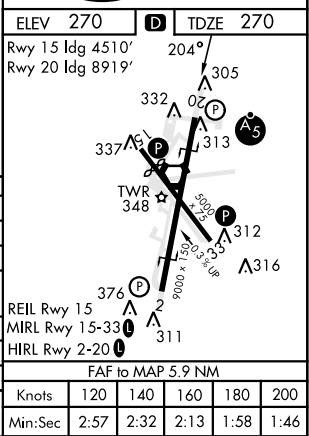
\*\*\* When ALS inop, increase CAT E vis to 3 miles.  
 When local altimeter setting not received, use Bradley Intl altimeter setting.  
**3491**



EMERG SAFE ALT 100 NM 7000



↑ When using BRADLEY altimeter setting	VORTAC	3.0 NM	2.9 NM	GS 3.00% TCH 50
CATEGORY	C	D	E	
S-ILS 20*	520/50	250	(300-1)	
S-LOC 20**	800/55	530	(600-1/4)	
<b>C</b> CIRCLING	1160-2 <sup>3/4</sup>	890 (900-2 <sup>3/4</sup> )	1660-3 1390 (1400-3)	
BRADLEY INTL ALTIMETER				
S-ILS 20*	564/50	294	(300-1)	
S-LOC 20***	860-1/4	590	(600-1/4)	
<b>C</b> CIRCLING	1200-2 <sup>3/4</sup> 930 (1000-2 <sup>3/4</sup> )	1200-3 930 (1000-3)	1680-3 1410 (1500-3)	



NE-1, 20 FEB 2025 to 20 MAR 2025

NE-1, 20 FEB 2025 to 20 MAR 2025