


LOC I-BAF 111.9	APP CRS 204°	Rwy Idg 8919
		TDZE 270
		Apt Elev 270

ILS or LOC RWY 20
WESTFIELD-BARNES RGNL (BAF)

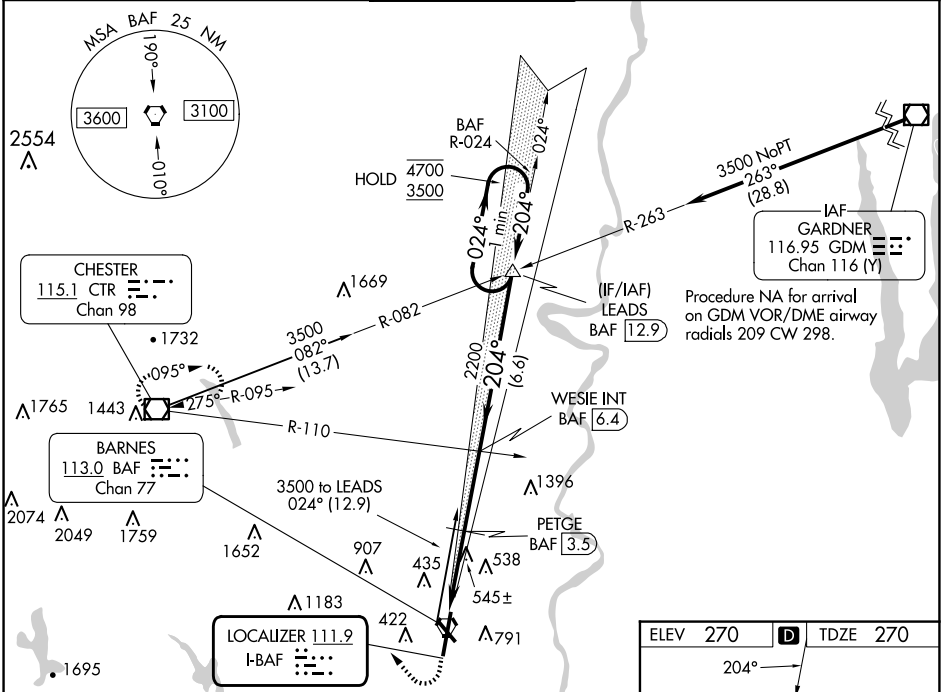
⚠ Circling Rwy 15 NA at night. DME from BAF VORTAC. DME use requires simultaneous reception of I-BAF and BAF DME. For inop ALS, increase S-ILS 20 Cat E visibility to RVR 4000; increase S-LOC 20 Cat E visibility to 3 SM; increase PETGE fix minimums S-LOC 20 Cat E visibility to 1 1/2 SM.

⚠ -21°C

MALSR 



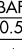
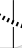
MISSED APPROACH: Climb to 1300 then climbing right turn to 4000 direct CTR VOR/DME and hold, continue climb-in-hold to 4000.

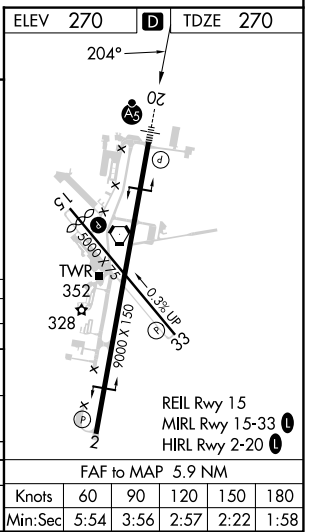
ATIS 127.1 263.15	BRADLEY APP CON 125.35 281.5	WESTFIELD TOWER ★ 118.9 (CTAF) 0 251.1	GND CON 121.7 289.4	CLNC DEL 121.7
-----------------------------	--	---	-------------------------------	--------------------------

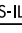
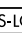


NE-1, 20 FEB 2025 to 20 MAR 2025

NE-1, 20 FEB 2025 to 20 MAR 2025

1300	4000	CTR	*LOC only.	WESIE INT BAF [6.4]	LEADS BAF [12.9]	One Minute Holding Pattern
				PETGE BAF [3.5]	2200	4700 / 3500
BAF [0.5]	BAF [2]	BAF [3.5]	BAF [3.5]	2200	204°	GS 3.00° TCH 50
-1.5 NM		-1.5 NM		-2.9 NM		-6.6 NM



CATEGORY	A	B	C	D	E
S-ILS 20	520/24		250 (300-1/2)		
S-LOC 20	1260/40 990 (1000-3/4)	1260/55 990 (1000-1)	1260-2 1/2 990 (1000-2 1/2)		
 CIRCLING	1260-1 1/4 990 (1000-1 1/4)	1260-1 1/2 990 (1000-1 1/2)	1260-3 990 (1000-3)	1660-3 1390 (1400-3)	
PETGE FIX MINIMUMS (DME REQUIRED)					
S-LOC 20	800/24	530 (600-1/2)	800/55	530 (600-1)	
 CIRCLING	1160-1 1/4	890 (900-1 1/4)	1160-2 3/4 890 (900-2 3/4)	1660-3 1390 (1400-3)	

FAF to MAP 5.9 NM					
Knots	60	90	120	150	180
Min:Sec	5:54	3:56	2:57	2:22	1:58