

WAAS CH 86405	APP CRS 204°	Rwy Idg TDZE Apt Elev	8919 270 270
W20A			

RNAV (GPS) RWY 20

WESTFIELD-BARNES RGNL (B.A.F.)

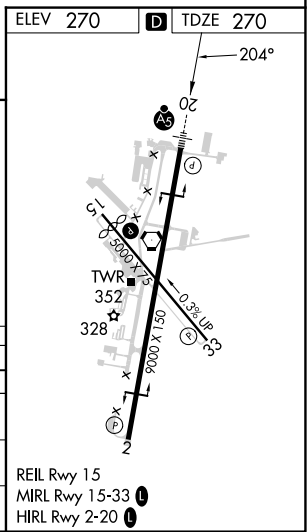
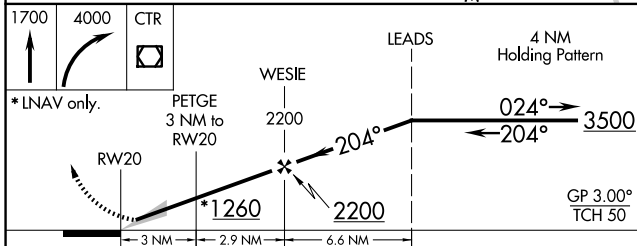
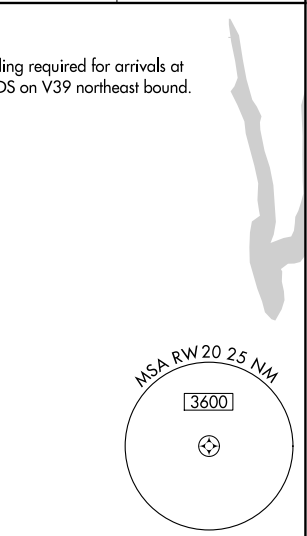
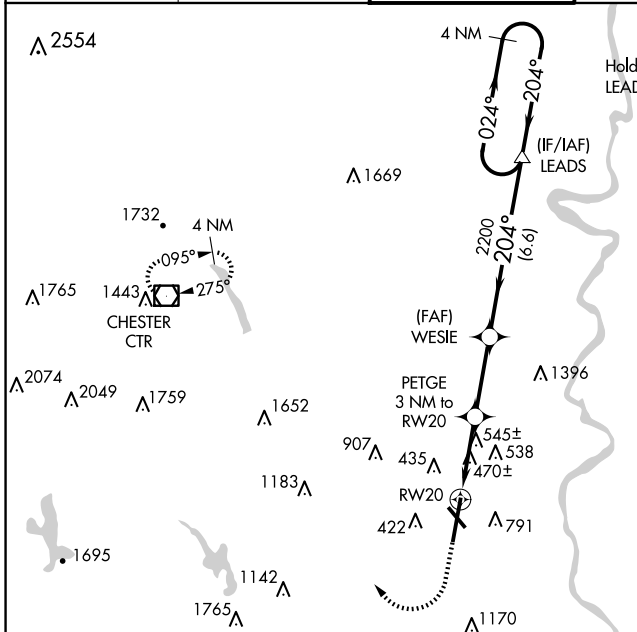
⚠ Baro-VNAV NA when using Bradley Intl altimeter setting. For uncompensated Baro-VNAV systems, LNAV/VNAV NA below -1.5°C (5°F) or above 54°C (130°F). DME/DME RNP-0.3 NA. When local altimeter setting not received, use Bradley Intl altimeter setting and increase LPV DA to 561; LNAV/VNAV DA to 996 and increase all Cats visibility to 2½; all MDA 60 feet and LNAV Cats B, C, D and E visibility to 1¼. For inoperative MALSR, increase LPV Cat E visibility to RVR 4000, LNAV/VNAV all Cats visibility to 2½, LNAV Cat E visibility to 1½. Night landing: Rwy 15 NA.

❄ -21°C

MALSR

MISSED APPROACH:
Climb to 1700 then climbing right turn to 4000 direct CTR VOR/DME and hold.

ATIS 127.1 263.15	BRADLEY APP CON 125.35 281.5	WESTFIELD TOWER * 118.9 (CTAF) 0 251.1	GND CON 121.7 289.4	CLNC DEL 121.7
-----------------------------	----------------------------------------	---------------------------------------------------------	-------------------------------	--------------------------



CATEGORY	A	B	C	D	E
LPV DA		520/24	250 (300-½)		
LNAV/VNAV DA		955-1⅞	685 (700-1⅞)		
LNAV MDA	800/24	530 (600-½)	800/55	530 (600-1)	
C CIRCLING	1160-1¼	890 (900-1¼)	1160-2¾ 890 (900-2¾)	1660-3	1390 (1400-3)

NE-1, 20 FEB 2025 to 20 MAR 2025

NE-1, 20 FEB 2025 to 20 MAR 2025