

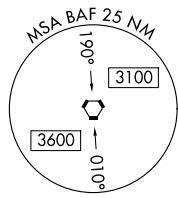
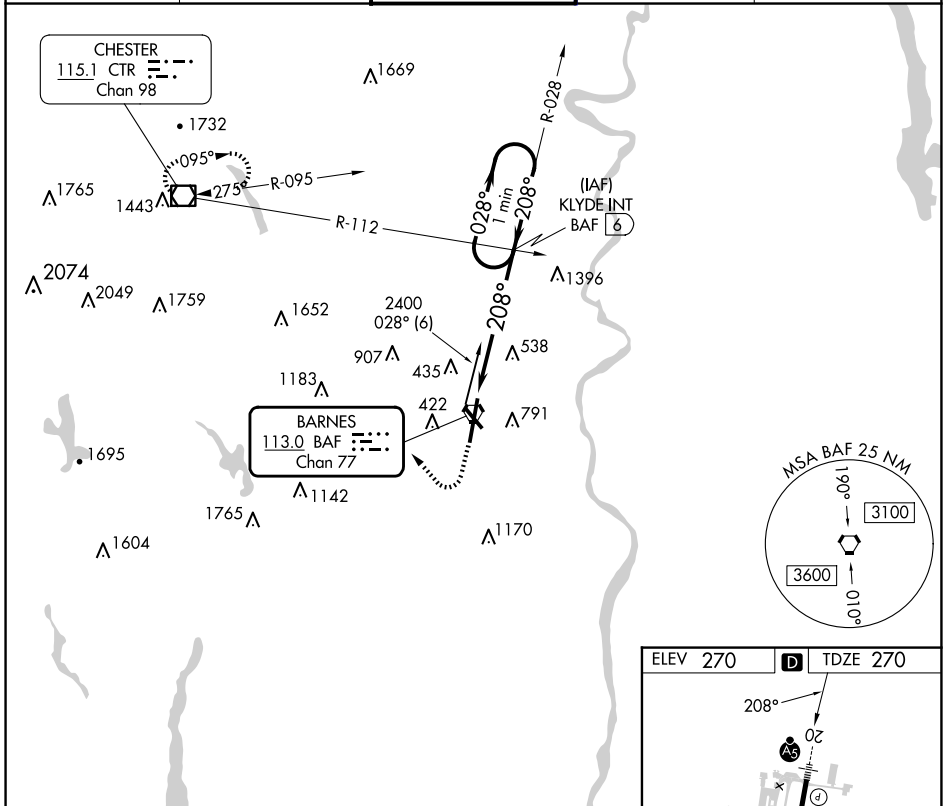
BAF VORTAC <b>113.0</b> Chan 77	APP CRS <b>208°</b>	Rwy Idg <b>8919</b> TDZE <b>270</b> Apt Elev <b>270</b>
---------------------------------------	------------------------	---

# VOR RWY 20

WESTFIELD-BARNES RGNL (BAF)

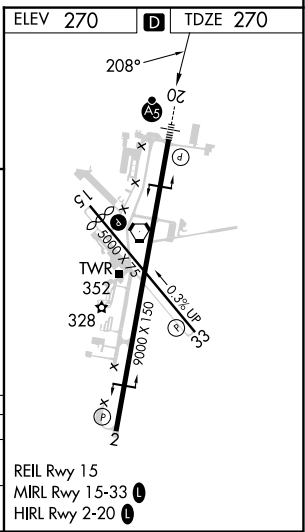
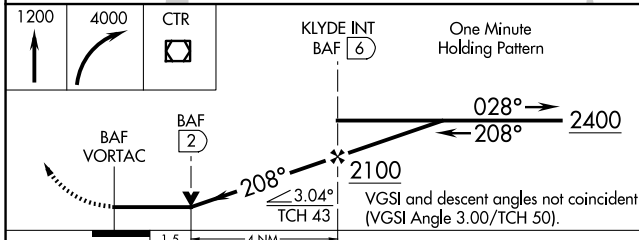
-21°C	For inoperative MALSR, increase Cat A/B visibility to RVR 5000. Night landing: Rwy 15 NA.	MALSR 	MISSED APPROACH: Climb to 1200, then climbing right turn to 4000 direct CTR VOR/DME and hold, continue climb in hold to 4000.
-------	---	-----------	---

ATIS <b>127.1 263.15</b>	BRADLEY APP CON <b>125.35 281.5</b>	WESTFIELD TOWER* <b>118.9 (CTAF) 0 251.1</b>	GND CON <b>121.7 289.4</b>	CLNC DEL <b>121.7</b>
-----------------------------	--	---	-------------------------------	--------------------------



NE-1, 20 FEB 2025 to 20 MAR 2025

NE-1, 20 FEB 2025 to 20 MAR 2025



CATEGORY	A	B	C	D
S-20	940/40	670 (700-¾)	940/60 670 (700-1¼)	940-1½ 670 (700-1½)
CIRCLING	1160-1¼	890 (900-1¼)	1160-2¾ 890 (900-2¾)	1660-3 1390 (1400-3)

REIL Rwy 15  
MIRL Rwy 15-33   
HIRL Rwy 2-20