

WAAS CH <b>69232</b> <b>W34A</b>	APP CRS <b>319°</b>	Rwy Idg <b>3421</b> TDZE <b>14</b> Apt Elev <b>14</b>
--	------------------------	---

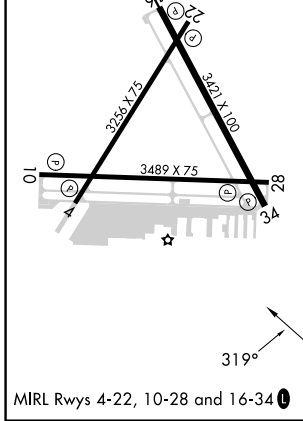
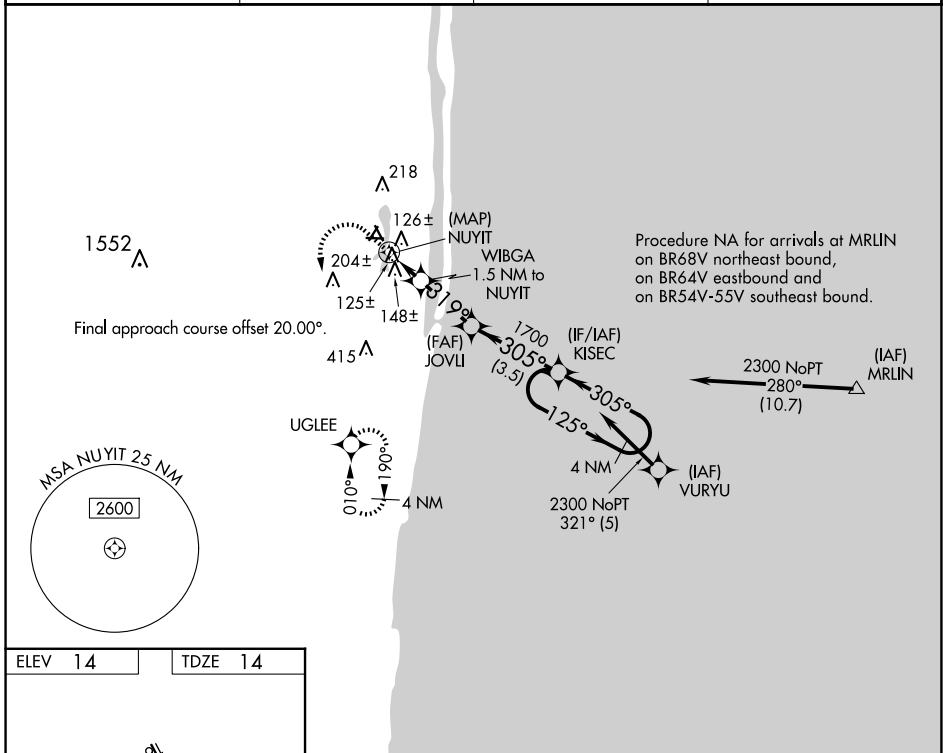
# RNAV (GPS) RWY 34

PALM BEACH COUNTY PARK (L.N.A)

**▼** DME/DME RNP-0.3 NA. Rwy 34 helicopter visibility reduction below 1 SM NA. Circling to Rwys 4, 16, 22, 28 NA at night. Straight-in Rwy 34 NA at night, Circling Rwy 34 NA at night.

**MISSED APPROACH:** (Do not exceed 200K until UGLEE) Climb to 700 then climbing left turn to 2000 direct UGLEE and hold.

AWOS-3PT <b>119.925</b>	PALM BEACH APP CON <b>127.35 343.6</b>	CINC DEL <b>127.35</b>	UNICOM <b>122.7 (CTAF) 0</b>
----------------------------	---	---------------------------	---------------------------------



700	2000	UGLEE	Visual Segment - Obstacles.		4 NM Holding Pattern