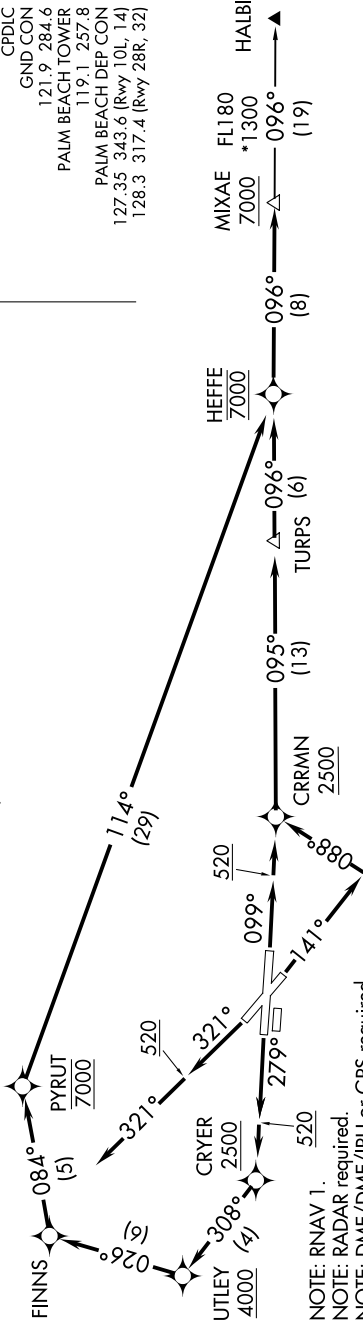


MIXAE THREE DEPARTURE (RNAV)

SE-3, 20 FEB 2025 to 20 MAR 2025

TOP ALTITUDE:
RWY 10L, 14, 28R: 7000
RWY 32: ASSIGNED BY ATC

TAKEOFF MINIMUMS:
Rwys 10L, 14, 28R, 32: Standard with minimum
climb of 500' per NM to 520.



- NOTE: RNAV 1.
- NOTE: RADAR required.
- NOTE: DME/DME/IRU or GPS required.
- NOTE: Turbo-jets only.
- NOTE: If unable to accept minimum climb rates, advise ATC on initial contact.

NOTE: Chart not to scale.

DEPARTURE ROUTE DESCRIPTION

TAKEOFF RUNWAY 10L: Climb on heading 099° to 520, then direct to cross CRRMN at or above 2500, then on track 095° to TURPS, then on track 096° to cross HEFFE at and maintain 7000, then...

TAKEOFF RUNWAY 14: Climb on heading 141° to intercept course 088° to cross CRRMN at or above 2500, then on track 095° to TURPS, then on track 096° to cross HEFFE at and maintain 7000, then...

TAKEOFF RUNWAY 28R: Climb on heading 279° to 520, then direct to cross CRYER at or above 2500, then on track 308° to cross UTLEY at or above 4000, then on track 026° to FINNS then on track 084° to cross PYRUT at 7000, then on track 114° to cross HEFFE at and maintain 7000, then...

... on track 096° to cross MIXAE at or above 7000, then on transition. Expect clearance to filed altitude within 10 minutes after departure.

TAKEOFF RUNWAY 32: Climb on heading 321° to 520, then on heading 321° or assigned by ATC for vectors to cross HEFFE at 7000, then on track 096° to cross MIXAE at or above 7000, then on transition. Maintain ATC assigned altitude, expect clearance to filed altitude within 10 minutes after departure.

HALBI TRANSITION (MIXAE3.HALBI)

SE-3, 20 FEB 2025 to 20 MAR 2025

MIXAE THREE DEPARTURE (RNAV)