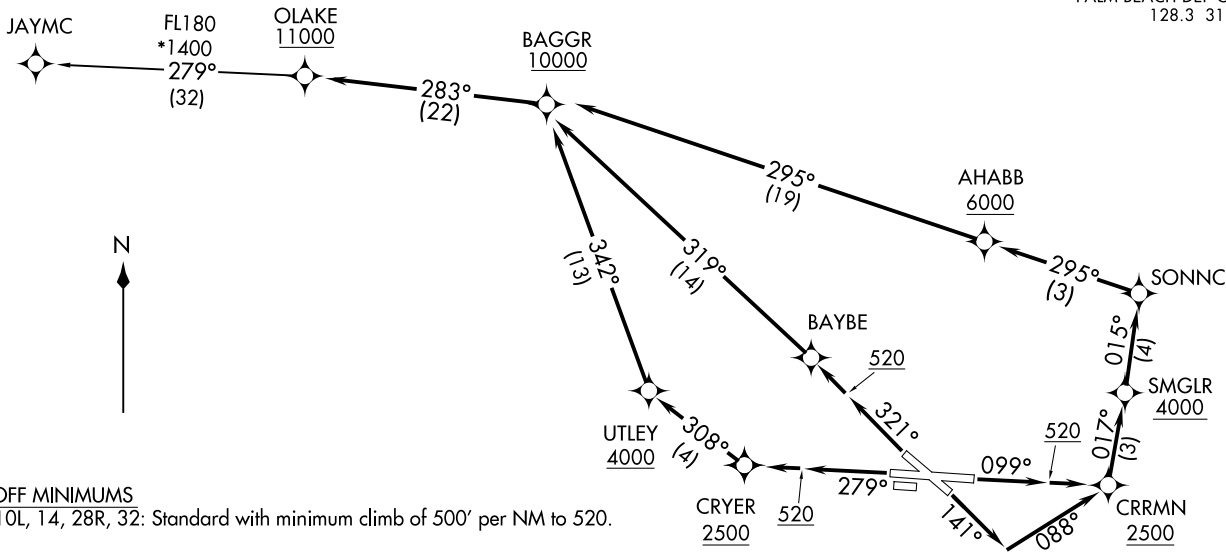


**TOP ALTITUDE:
11000**

RNAV 1 - DME/DME/IRU or GPS.

RADAR required for non-GPS equipped aircraft.

D-ATIS 123.75
CLNC DEL 121.6 284.6
CPDLC
GND CON 121.9 284.6
PALM BEACH TOWER 119.1 257.8
PALM BEACH DEP CON 128.3 317.4



NOTE: Turbo-jets only.

(NARRATIVE ON FOLLOWING PAGE)

NOTE: Chart not to scale.

OLAKE TWO DEPARTURE (RNAV)
(OLAKE2.OLAKE) 19MAY22

WEST PALM BEACH, FLORIDA
PALM BEACH INTL (PBI)

(OLAKE2.OLAKE) 22195
OLAKE TWO DEPARTURE (RNAV)

PALM BEACH INTL (PBI)
WEST PALM BEACH, FLORIDA

AL-449 (FAA)

OLAKE TWO DEPARTURE (RNAV)



DEPARTURE ROUTE DESCRIPTION

TAKEOFF RUNWAY 10L: Climb on heading 099° to 520, then direct CRRMN at or above 2500, then on track 017° to cross SMGLR at or above 4000, then on track 015° to SONNC, then on track 295° to cross AHABB at or above 6000, then on track 295° to cross BAGGR at or above 10000, thence ...

TAKEOFF RUNWAY 14: Climb on heading 141° to intercept course 088° to cross CRRMN at or above 2500, then on track 017° to cross SMGLR at or above 4000, then on track 015° to SONNC, then on track 295° to cross AHABB at or above 6000, then on track 295° to cross BAGGR at or above 10000, thence ...

TAKEOFF RUNWAY 28R: Climb on heading 279° to 520, then direct CRYER at or above 2500, then on track 308° to cross UTLEY at or above 4000, then on track 342° to cross BAGGR at or above 10000, thence ...

TAKEOFF RUNWAY 32: Climb on heading 321° to 520, then direct BAYBE, then on track 319° to cross BAGGR at or above 10000, thence ...

...on track 283° to cross OLAKE at or above 11000, then on transition.
Maintain 11000, expect filed altitude within 10 minutes after departure.

JAYMC TRANSITION (OLAKE2.JAYMC)

SE-3, 20 FEB 2025 to 20 MAR 2025

SE-3, 20 FEB 2025 to 20 MAR 2025