

APP CRS	Rwy Idg	<b>8151</b>
<b>099°</b>	TDZE	<b>16</b>
	Apt Elev	<b>20</b>

# RNAV (RNP) Z RWY 10L

PALM BEACH INTL (PBI)

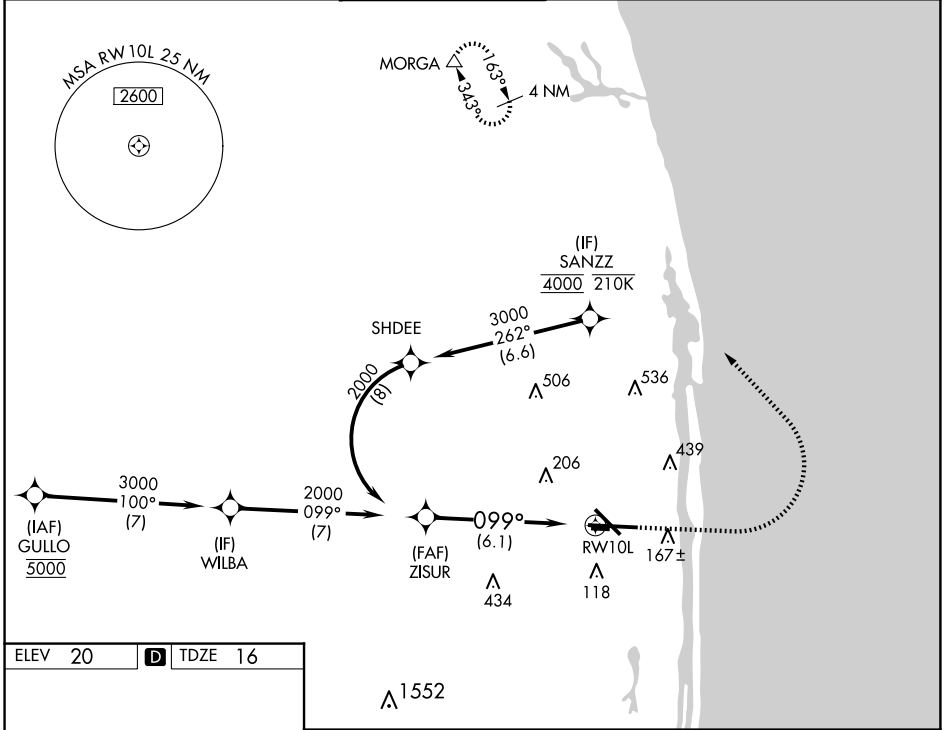
RNP AR APCH - GPS.

**⚠** For uncompensated Baro-VNAV systems, procedure NA below 6°C or above 54°C.

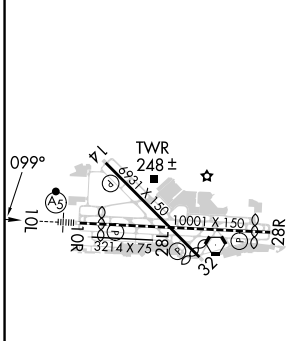
MALSR

**MISSED APPROACH:** Climb to 1000 then climbing left turn to 3000 direct MORGA and hold.

D-ATIS	PALM BEACH APP CON	PALM BEACH TOWER	GND CON	CLNC DEL	CPDLC
<b>123.75</b>	<b>128.3 317.4</b>	<b>119.1 257.8</b>	<b>121.9 284.6</b>	<b>121.6 284.6</b>	

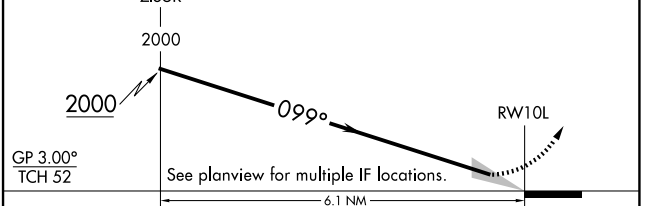


ELEV	20	<b>D</b>	TDZE	16
------	----	----------	------	----



VGSI and RNAV glidepath not coincident (VGSI Angle 3.00/TCH 68).

1000 3000 MORGA



CATEGORY	A	B	C	D
RNP 0.30 DA	355/26 339 (400-1/2)			

HIRL Rwy 10L-28R  
REIL Rws 10R, 14, 28L, 28R and 32  
MIRL Rws 14-32 and 10R-28L

**AUTHORIZATION REQUIRED**

SE-3, 20 FEB 2025 to 20 MAR 2025

SE-3, 20 FEB 2025 to 20 MAR 2025