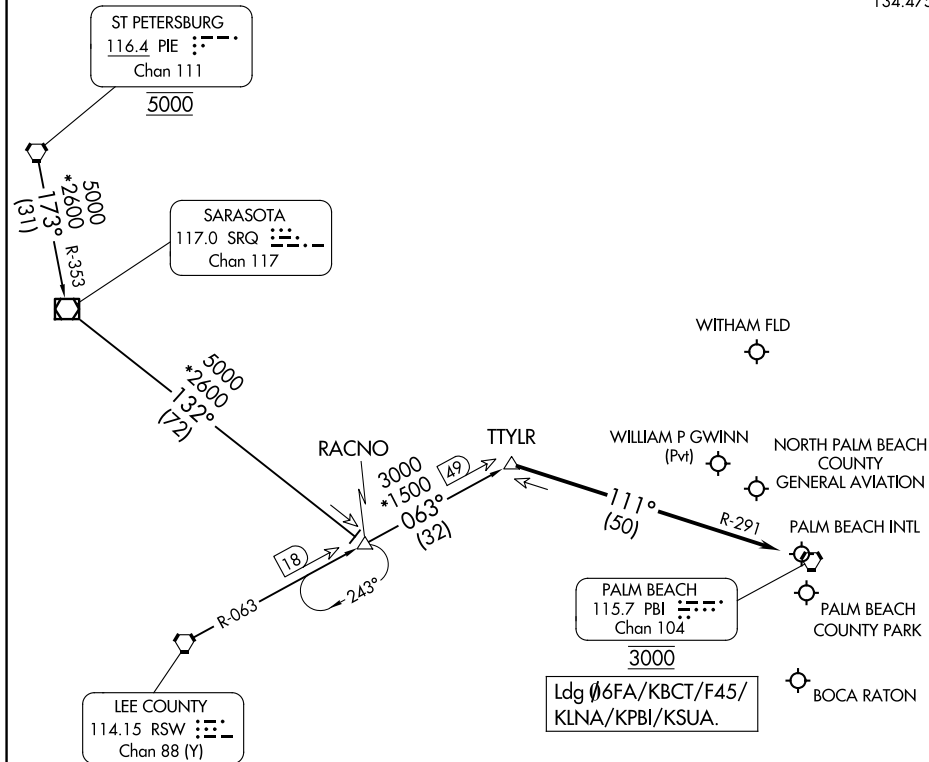


TTYLR FOUR ARRIVAL

WEST PALM BEACH, FLORIDA

RADAR required. DME required.

PALM BEACH APP CON
 125.2 317.4
 PBI D-ATIS
 123.75
 SUA ATIS
 134.475



SE-3, 20 FEB 2025 to 20 MAR 2025

SE-3, 20 FEB 2025 to 20 MAR 2025

NOTE: Chart not to scale.

ARRIVAL ROUTE DESCRIPTION

RACNO TRANSITION (RACNO.TTYLR4): From over RACNO on RSW R-063 to TTYLR, thence. . . .

ST PETERSBURG TRANSITION (PIE.TTYLR4): From over PIE VORTAC on PIE R-173 and SRQ R-353 to SRQ VOR/DME, then on SRQ R-132 to RACNO, then on RSW R-063 to TTYLR, thence. . . .

LANDING ALL AIRPORTS: From TTYLR on PALM BEACH (PBI) R-291 to cross PBI VORTAC at 3000. Expect RADAR vectors.