

# HI-TACAN Z RWY 25

TACAN NUW Chan <b>85</b>	APCH CRS <b>254°</b>	Rwy Idg TDZE Arpt Elev <b>8000</b> <b>28</b> <b>47</b>
-----------------------------	-------------------------	---

[USN]

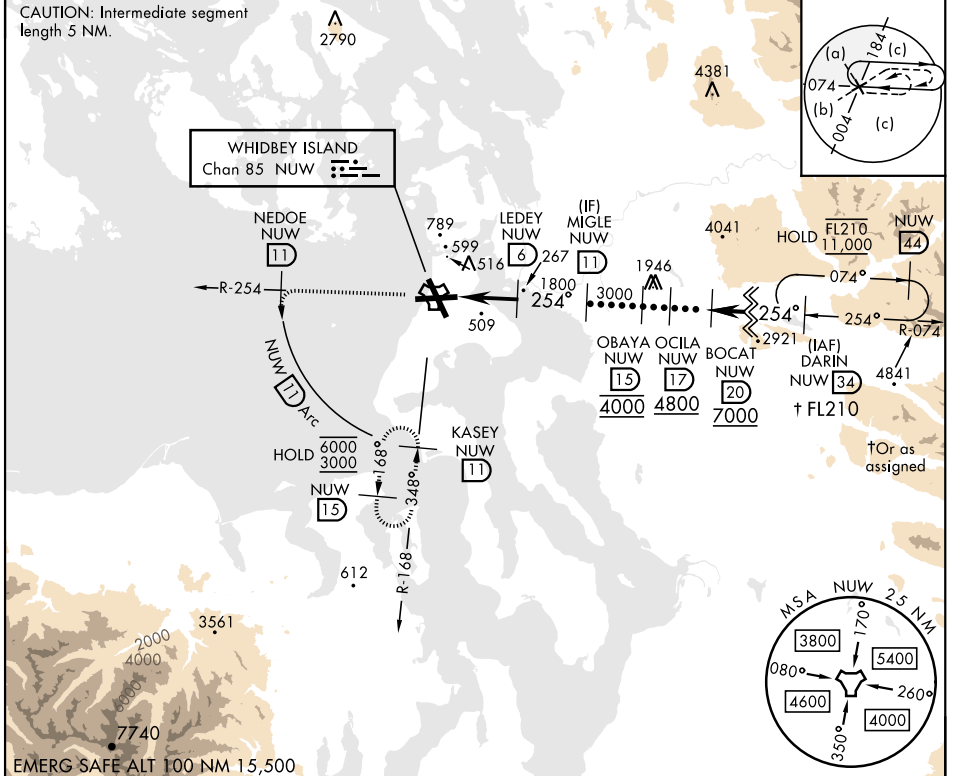
WHIDBEY ISLAND NAS (AULT FLD) (KNUW)

▼ \* When ALS inop, increase CAT CDE vis to 2 miles.

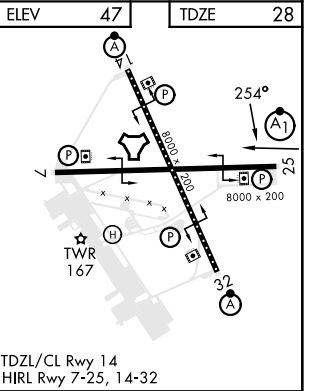


MISSED APPROACH: Climb to 3000 via NUW TACAN R-254 to NEDOE, then arc SW of NUW via 11 DME arc to KASEY and hold.

ATIS <b>134.15 281.5</b>	WHIDBEY APP CON <b>120.7 270.8</b> (EAST) <b>118.2 285.65</b> (WEST)	WHIDBEY TOWER <b>127.9 340.2</b>	GND CON <b>121.75 336.4</b>	CLNC DEL <b>135.1 379.9</b>	ASR/PAR
-----------------------------	--	-------------------------------------	--------------------------------	--------------------------------	---------



3000 NUW R-254	NEDOE NUW (11) Arc	MIGLE NUW (11)	
NUW TACAN	KIGVE NUW (17) NUW (3)	LEDEY NUW (6)	
4.3 NM			
CATEGORY	C	D	E
S-25*	760-1 5/8	732	(800-1 1/8)
CIRCLING	860-2 1/2 813 (900-2 1/2)	900-2 3/4 853 (900-2 3/4)	1200-3 1153 (1200-3)



# HI-TACAN Z RWY 25

NW-1, 20 FEB 2025 to 20 MAR 2025

NW-1, 20 FEB 2025 to 20 MAR 2025