

OAK HARBOR, WASHINGTON

# ILS or LOC/DME RWY 14

LOC/DME I-NUW <b>110.1</b> Chan <b>38</b>	APCH CRS <b>137°</b>	Rwy Idg <b>8000</b> TDZE <b>39</b> Arprt Elev <b>47</b>
---	-------------------------	---

[USN]

WHIDBEY ISLAND NAS (AULT FLD) (KNUW)

VOR, DME required.

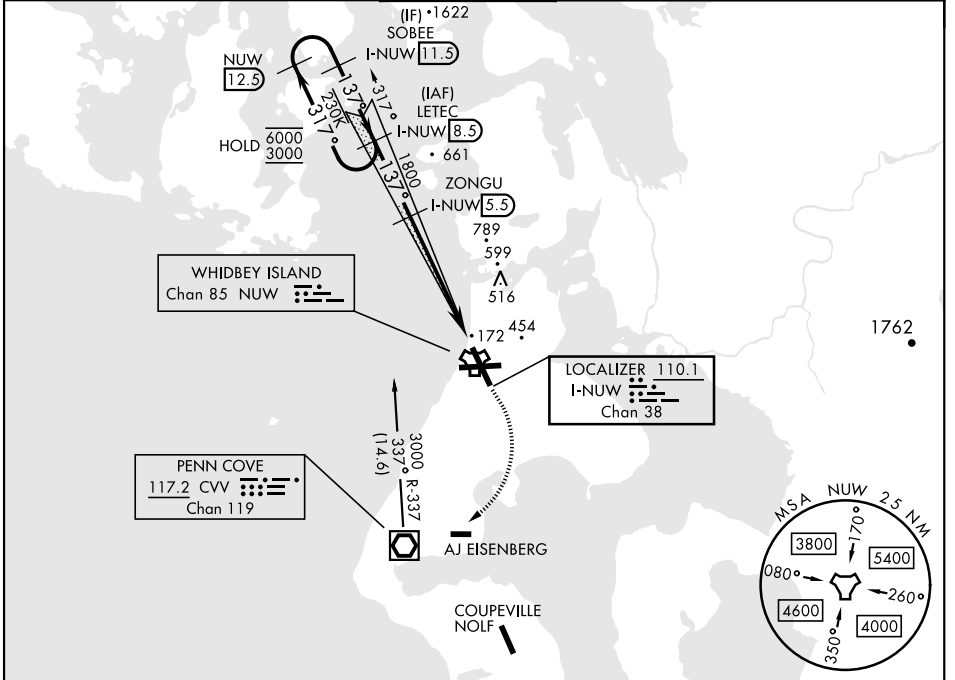
\*When TDZ/CL lights inop, increase RVR to 24.  
 When ALS inop, increase RVR to 40, vis to ¾ mile.  
 \*\*When ALS inop, increase CAT AB RVR to 55,  
 vis to 1 mile; CAT CDE RVR to 60, vis to 1½ miles.

ALSF-2



**MISSED APPROACH:** Climb to 2000 via hdg 137°, then climbing right turn to 3000, direct CVV VOR/DME, then via CVV R-337 to LETEC and hold.

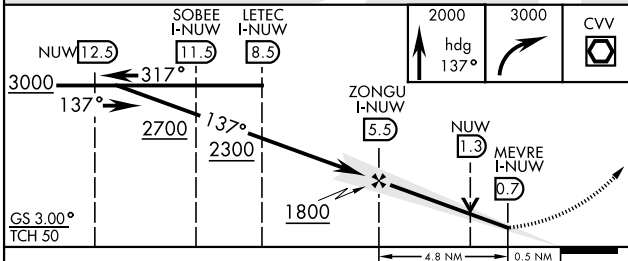
ATIS <b>134.15 281.5</b>	WHIDBEY APP CON <b>120.7 270.8 (E)</b> <b>118.2 285.65 (W)</b>	WHIDBEY TOWER <b>127.9 340.2</b>	GND CON <b>121.75 336.4</b>	CLNC DEL <b>135.1 379.9</b>	ASR/PAR
-----------------------------	--	-------------------------------------	--------------------------------	--------------------------------	---------



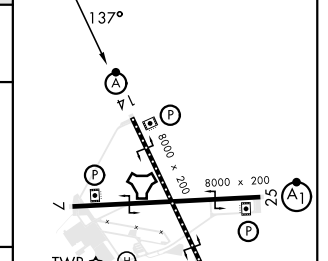
NW-1, 20 FEB 2025 to 20 MAR 2025

NW-1, 20 FEB 2025 to 20 MAR 2025

EMERG SAFE ALT 100 NM 15,500



ELEV	47	TDZE	39
------	----	------	----



CATEGORY	A	B	C	D	E
S-ILS 14*	239/18		200	(200-½)	
S-LOC 14**	440/24	401 (400-½)	440/40	401 (400-¾)	
CIRCLING	760-1	713 (800-1)	860-2½	900-2¾	1200-3
			813 (900-2½)	853 (900-2¾)	1153 (1200-3)

HIRL Rwy 7-25, 14-32  
TDZL/CL Rwy 14

OAK HARBOR, WASHINGTON

48°21'N-122°39'W

WHIDBEY ISLAND NAS (AULT FLD) (KNUW)

Amdt 2 31OCT24

# ILS or LOC/DME RWY 14