

TACAN Y RWY 32

TACAN NUW Chan 85	APCH CRS 311°	Rwy ldg 8000 TDZE 47 Arprt Elev 47
-----------------------------	-------------------------	---

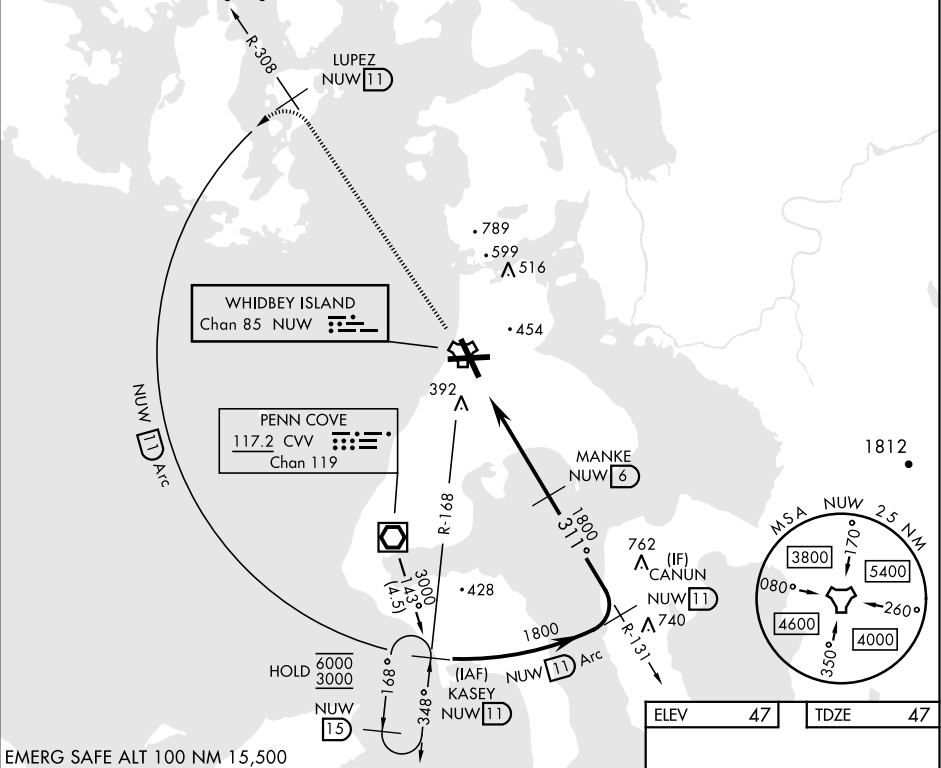
[USN]

WHIDBEY ISLAND NAS (AULT FLD) (KNUW)

<p>▼ * When ALS inop, increase CAT AB RVR to 55, vis to 1 mile; CAT CDE to 1½ miles.</p>	<p>ALSF-2 A</p>	<p>MISSED APPROACH: Climb to 3000 via NUW TACAN R-308 to LUPEZ, then Arc SW of NUW via 11 DME Arc to KASEY and hold.</p>
--	---------------------	--

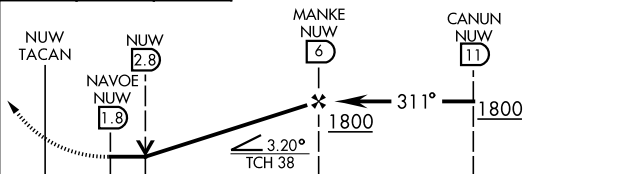
<p>ATIS 134.15 281.5</p>	<p>WHIDBEY APP CON 120.7 270.8 (E) 118.2 285.65 (W)</p>	<p>WHIDBEY TOWER 127.9 340.2</p>	<p>GND CON 121.75 336.4</p>	<p>CLNC DEL 135.1 379.9</p>	<p>ASR/PAR</p>
-------------------------------------	---	---	--	--	----------------

CAUTION: CAT CDE in med seg length 5 NM.



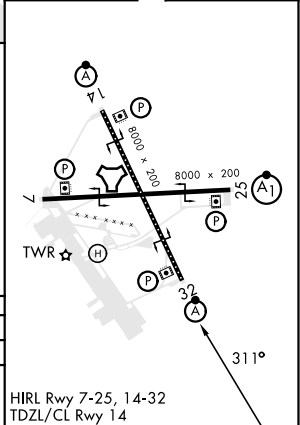
EMERG SAFE ALT 100 NM 15,500

3000 NUW R-308	LUPEZ NUW 11	NUW Arc
-------------------	-----------------	------------



CATEGORY	A	B	C	D	E
S-32 *	680/30	633 (700-¾)	680-1½	633 (700-1¾)	
CIRCLING	760-1	713 (800-1)	860-2½ 813 (900-2½)	900-2¾ 853 (900-2¾)	1200-3 1153 (1200-3)

ELEV	47	TDZE	47
------	----	------	----



HIRL Rwy 7-25, 14-32
TDZL/CL Rwy 14

TACAN Y RWY 32

NW-1, 20 FEB 2025 to 20 MAR 2025

NW-1, 20 FEB 2025 to 20 MAR 2025