

WICHITA, KANSAS

# ILS or LOC RWY 1L

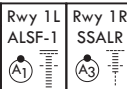
LOC I-IAB <b>111.1</b>	APCH CRS <b>008°</b>	Rwy Idg TDZE Arpt Elev	1L <b>12,000</b> <b>1347</b> <b>1372</b>	1R <b>12,007</b> <b>1347</b> <b>1372</b>
---------------------------	-------------------------	------------------------------	---	---

(USAF)

MC CONNELL AFB (KIAB)

RADAR or DME required

▼ \* When ALS inop, increase RVR to 40 and vis to 3/4 mile.  
\*\* When ALS inop, increase RVR to 55 and vis to 1 mile.



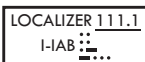
MISSED APPROACH: Climb to 4000 via IAB TACAN R-011 to 15 DME (PURKE). Expect further clearance from ATC.

D-ATIS <b>124.65 269.9</b>	WICHITA APP CON <b>134.8 269.1</b>	TOWER <b>127.25 291.775</b>	GND CON <b>118.0 275.8</b>
-------------------------------	---------------------------------------	--------------------------------	-------------------------------

\*\*\* When ALS inop, increase CAT AB RVR to 55 and vis to 1 mile, CAT CDE RVR to 60 and vis to 1 1/8.  
\*\*\*\* Circling not authorized W of Rwy 1L-19R.

ATC lost communication procedures on missed approach as follows: At 15 DME clearance limit fix fly the 15DME Arc to KAYEE then KOSAC and hold.

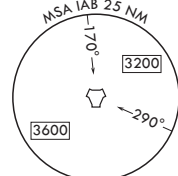
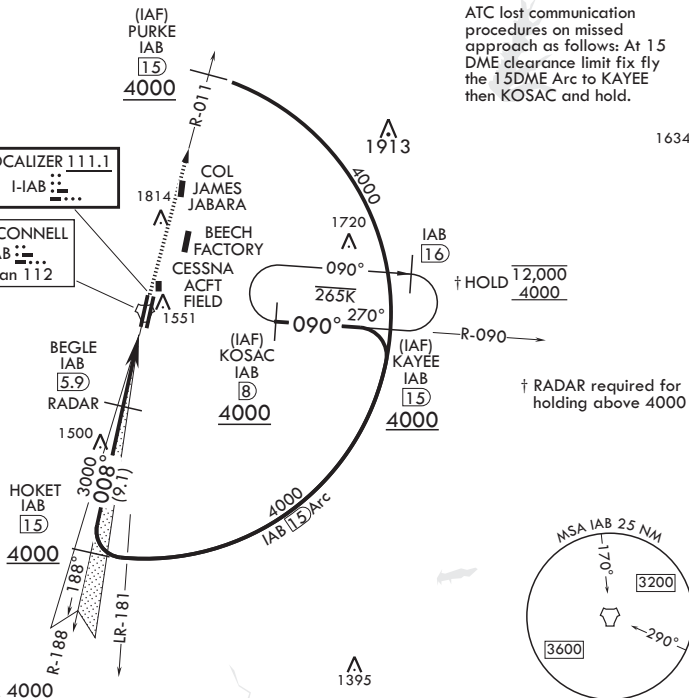
Practice circling approaches NE of IAB not authorized.



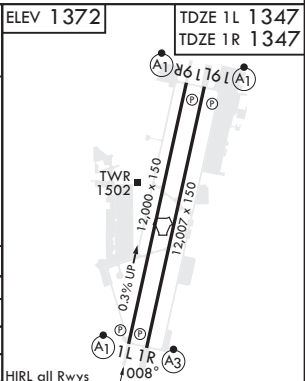
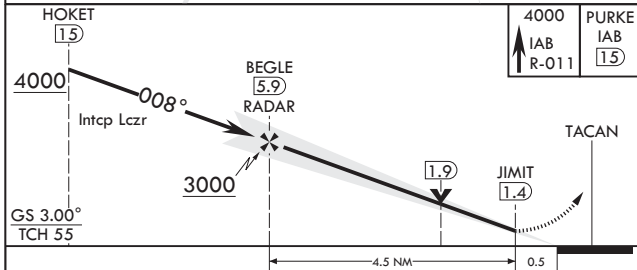
Rwy 1L glideslope unusable for coupled approaches at or below 1533' MSL.

CAUTION: LOC front course unusable beyond 25° left/right of course.

CAUTION: VGSI and ILS TCH are not coincidental.



EMERG SAFE ALT 100 NM 4000



CATEGORY	A	B	C	D	E
S-ILS 1L*	1547/24		200	(200-½)	
S-LOC 1L**	1700/24	353 (400-½)	1700/35	353	(400-¾)
SIDESTEP 1R***	1720/40		373	(400-¾)	
☐ CIRCLING****	1900-1 528 (600-1)		1900-1½ 528 (600-1½)	2400-3 1028 (1100-3)	

FAF to MAP 4.5 NM					
Knots	60	90	120	150	180
Min:Sec	4:30	3:00	2:15	1:48	1:30

WICHITA, KANSAS  
Amdt 6 28DEC23

37°37'N - 97°16'W

MC CONNELL AFB (KIAB)

# ILS or LOC RWY 1L

NC-2, 20 FEB 2025 to 20 MAR 2025

NC-2, 20 FEB 2025 to 20 MAR 2025