

TACAN RWY 19R

TACAN IAB Chan 112	APCH CRS 186°	Rwy Idg 12,000 TDZE 1372 Arprt Elev 1372
------------------------------	-------------------------	---

[USAF]

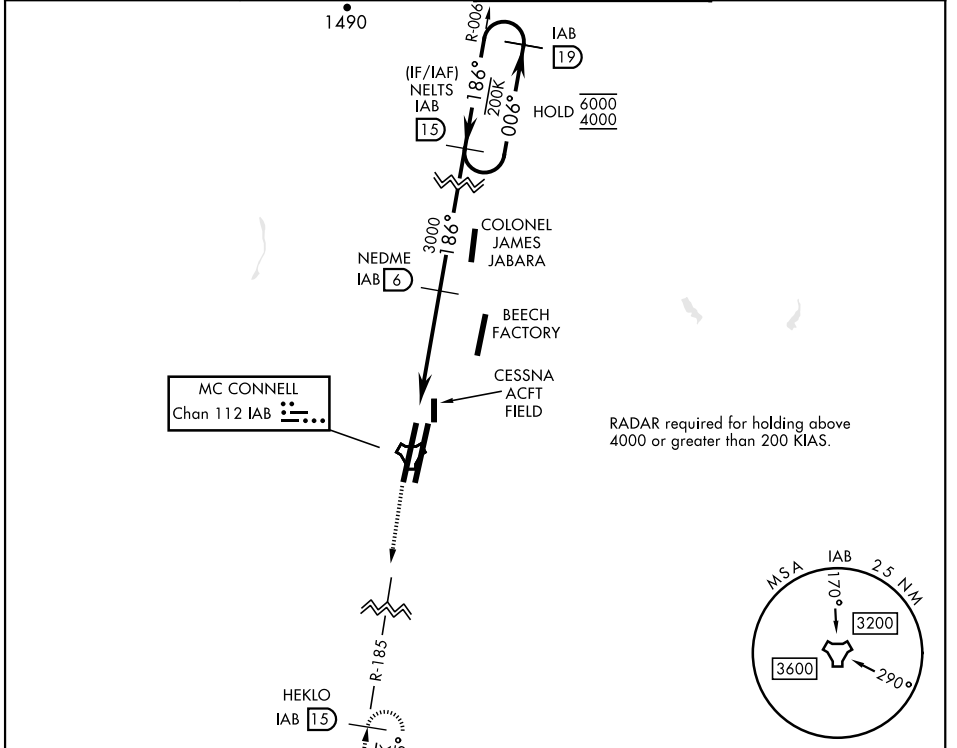
MC CONNELL AFB (KIAB)

▼ * When ALS inop, increase CAT AB RVR to 55 and vis to 1 mile, CAT CDE vis to 1 3/8 miles.
 ** Circling not authorized W of Rwy 1L-19R.

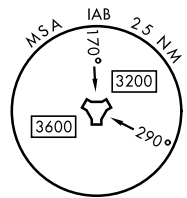


MISSED APPROACH: Climb to 4000 via IAB TACAN R-185 to 15 DME (HEKLO) and hold as published. Expect further clearance from ATC.

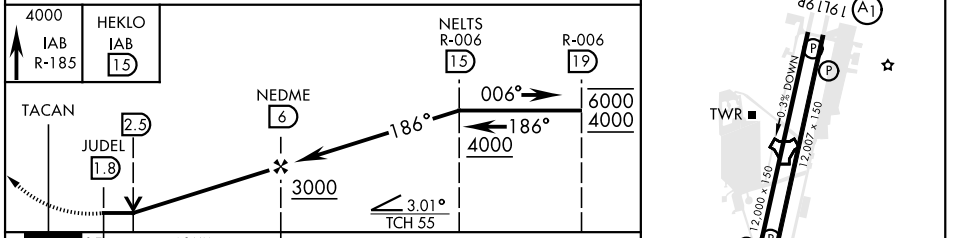
D-ATIS 124.65 269.9	WICHITA APP CON 134.8 269.1	TOWER 127.25 291.775	GND CON 118.0 275.8
-------------------------------	---------------------------------------	--------------------------------	-------------------------------



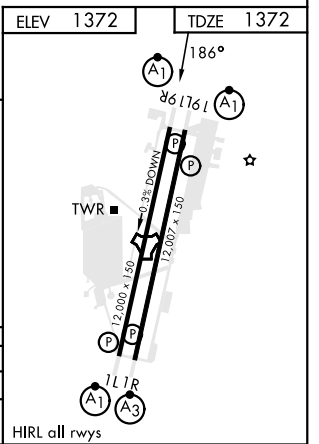
RADAR required for holding above 4000 or greater than 200 KIAS.



ELEV 1372	TDZE 1372
-----------	-----------



CATEGORY	A	B	C	D	E
S-19R*	1880/24	508 (600-1/2)	1880/55	508 (600-1)	
CIRCLING**	1900-1	528 (600-1)	1940-1 1/2 568 (600-1/2)	1940-2 568 (600-2)	2400-3 1028 (600-3)



WICHITA, KANSAS 37°37'N-97°16'W MC CONNELL AFB (KIAB)

TACAN RWY 19R

NC-2, 20 FEB 2025 to 20 MAR 2025

NC-2, 20 FEB 2025 to 20 MAR 2025