

# TACAN RWY 1R

TACAN IAB Chan 112	APCH CRS 005°	Rwy Idg TDZE Arprt Elev	12,007 1347 1372
-----------------------	------------------	-------------------------------	------------------------

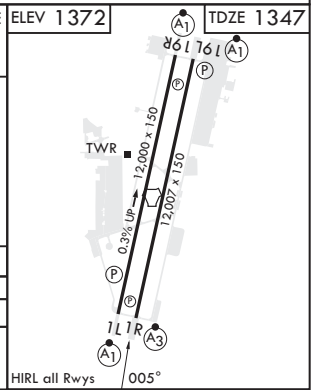
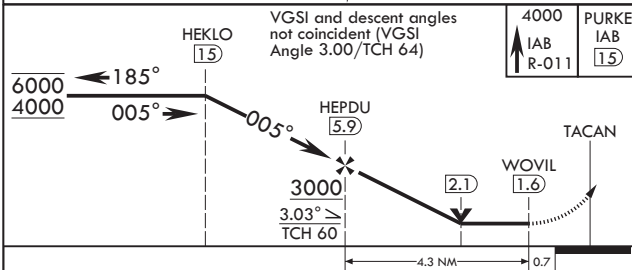
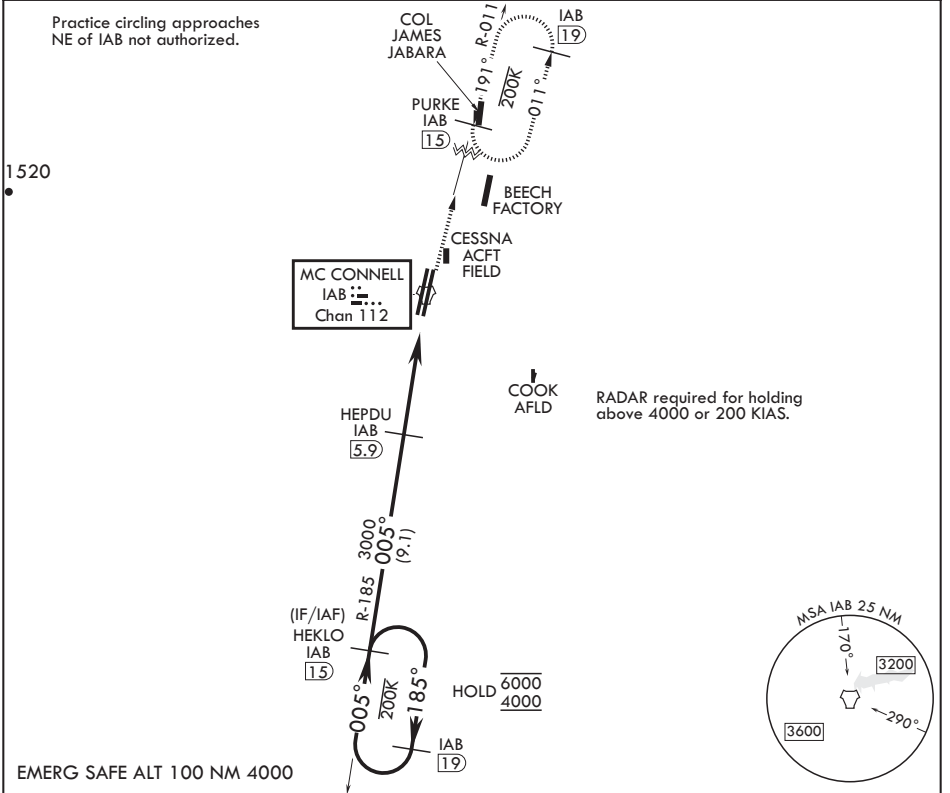
-(USAF)

MC CONNELL AFB (KIAB)

▼ \*When ALS inop, increase CAT AB RVR to 55 and vis to 1 mile, CAT CDE vis to 1 1/4 miles.  
\*\*Circling not authorized W of Rwy 1L-19R.

SSALR MISSED APPROACH: Climb to 4000 via IAB TACAN R-011 to 15 DME (PURKE) and hold as published. Expect further clearance from ATC.

D-ATIS 124.65 269.9	WICHITA APP CON 134.8 269.1	TOWER 127.25 291.775	GND CON 118.0 275.8
------------------------	--------------------------------	-------------------------	------------------------



CATEGORY	A	B	C	D	E
S-1R*	1780/40		433	(500-¾)	
☐ CIRCLING**	1900-1 528 (600-1)		1940-1½ 568 (600-1½)	1940-2 568 (600-2)	2400-3 1028 (1100-3)

NC-2, 20 FEB 2025 to 20 MAR 2025

NC-2, 20 FEB 2025 to 20 MAR 2025