

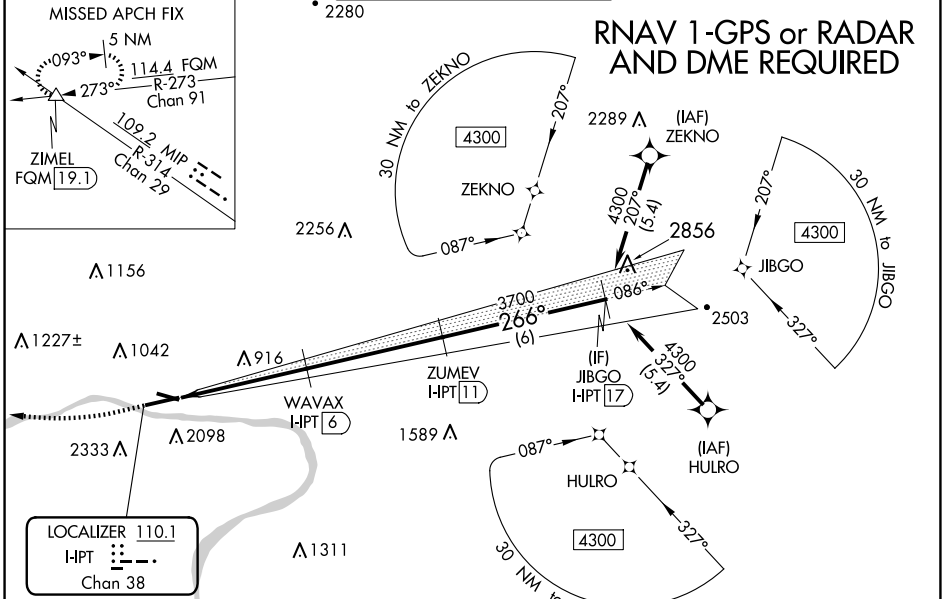
LOC/DME I-IPT 110.1 Chan 38	APP CRS 266°	Rwy Idg TDZE Apt Elev	6063 527 528
---	------------------------	-----------------------------	---

ILS or LOC RWY 27

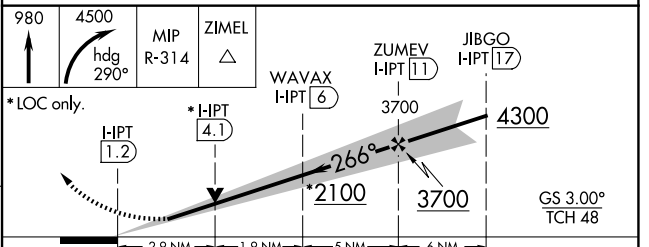
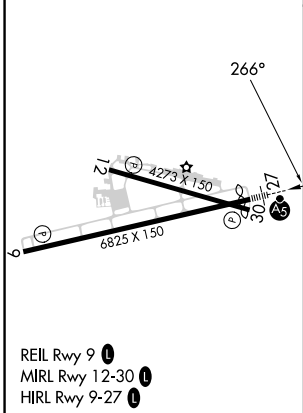
WILLIAMSPORT RGNL (IPT)

<p>▽ Inop table does not apply to S-ILS 27. Circling NA south of Rwy 9 and southwest of Rwy 30.</p> <p>⚠ Circling Rwy 12, 30 NA at night. Rwy 27 helicopter visibility reduction below $\frac{3}{4}$ SM NA. DME required.</p> <p>❄ -14°C</p>	<p>MALSR</p>	<p>MISSED APPROACH: Climb to 980 then climbing right turn to 4500 on heading 290° and on MIP VORTAC R-314 to ZIMEL INT/FQM 19.1 DME and hold, continue climb-in-hold to 4500.</p>
--	--------------	---

ASOS 125.225	NEW YORK CENTER 124.9	WILLIAMSPORT TOWER ★ 119.1 (CTAF) 257.8	GND CON 121.9	UNICOM 122.95
------------------------	---------------------------------	---	-------------------------	-------------------------



ELEV 528	D	TDZE 527
----------	----------	----------



CATEGORY	A	B	C	D
S-ILS 27	777- $\frac{3}{4}$ 250 (300- $\frac{3}{4}$)			
S-LOC 27	1500- $\frac{3}{4}$ 973 (1000- $\frac{3}{4}$)	1500-1 973 (1000-1)	1500-2 $\frac{1}{2}$	973 (1000-2 $\frac{1}{2}$)
C CIRCLING	1500-1 $\frac{1}{4}$ 972 (1000-1 $\frac{1}{4}$)	1500-1 $\frac{1}{2}$ 972 (1000-1 $\frac{1}{2}$)	1840-3 1312 (1400-3)	2060-3 1532 (1600-3)

NE-4, 20 FEB 2025 to 20 MAR 2025

NE-4, 20 FEB 2025 to 20 MAR 2025