

WAAS CH <b>90499</b> <b>W17A</b>	APP CRS <b>169°</b>	Rwy Idg <b>6604</b> TDZE <b>32</b> Apt Elev <b>32</b>
--	------------------------	---

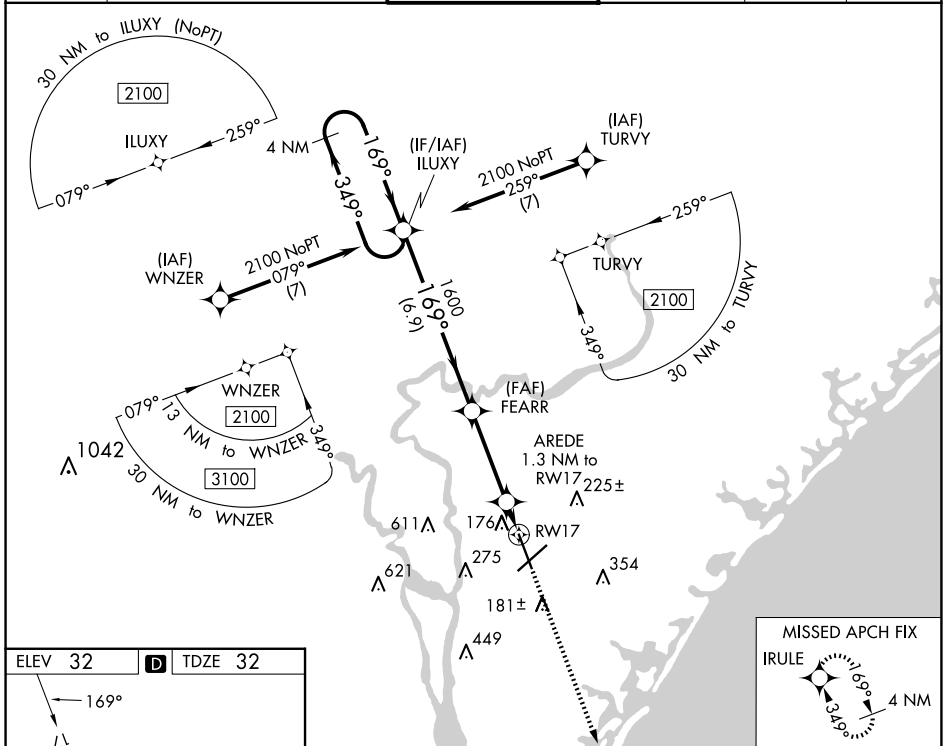
# RNAV (GPS) RWY 17

WILMINGTON INTL (ILM)

**⚠** For uncompensated Baro-VNAV systems, LNAV/VNAV NA below -7°C (20°F) or above 54°C (130°F). DME/DME RNP-0.3 NA. Rwy 17 helicopter visibility reduction below ¾ SM NA.

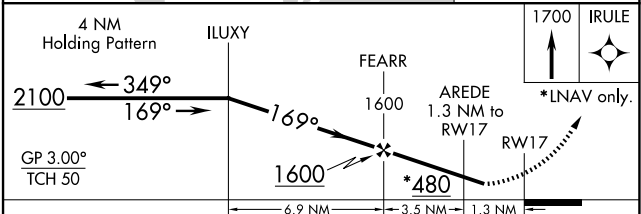
MISSED APPROACH: Climb to 1700 direct IRULE and hold.

ATIS <b>124.975</b>	WILMINGTON APP CON★ <b>118.25 284.65</b> (164°-343°) <b>135.75 317.425</b> (344°-163°)	WILMINGTON TOWER★ <b>119.9</b> (CTAF) <b>0 239.3</b>	GND CON <b>121.9 348.6</b>	CLNC DEL <b>120.875</b>	UNICOM <b>122.95</b>
------------------------	--	---	-------------------------------	----------------------------	-------------------------



ELEV <b>32</b>	<b>D</b>	TDZE <b>32</b>
----------------	----------	----------------

The inset diagram shows the runway layout with RWY 17 and RWY 15. It includes navigation aids such as the TWR (Tower) at 136 feet and other local frequencies like 724X.150 and 87.



CATEGORY	A	B	C	D
LPV DA	369-1/8 337 (400-1/8)			
LNAV/VNAV DA	405-1/4 373 (400-1/4)			
LNAV MDA	420-1	388 (400-1)	420-1/8	388 (400-1/8)
<b>C</b> CIRCLING	560-1	528 (600-1)	720-2 688 (700-2)	920-3 888 (900-3)

HIRL Rwy 6-24 and 17-35 **Ⓛ**  
REIL Rwy 6 and 17 **Ⓛ**

SE-2, 20 FEB 2025 to 20 MAR 2025

SE-2, 20 FEB 2025 to 20 MAR 2025