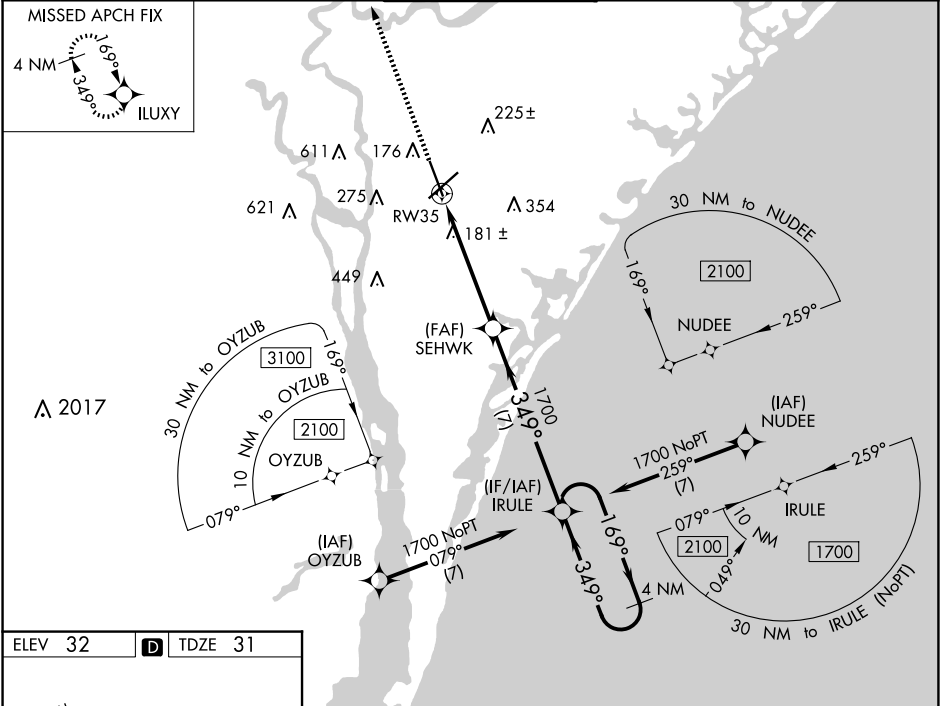


WAAS CH 50499 W35A	APP CRS 349°	Rwy Idg 7204 TDZE 31 Apt Elev 32
--	------------------------	---

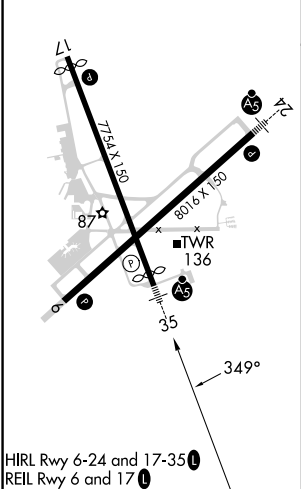
RNAV (GPS) RWY 35

WILMINGTON INTL (ILM)

	For uncompensated Baro-VNAV systems, LNAV/VNAV NA below -7°C (20°F) or above 54°C (130°F). DME/DME RNP-0.3 NA. For inop ALS, increase LNAV Cats C/D visibility to 1½ SM.		MALSR 	MISSED APPROACH: Climb to 3000 direct ILUXY and hold.	
	ATIS 124.975	WILMINGTON APP CON★ 118.25 284.65 (164°-343°) 135.75 317.425 (344°-163°)		WILMINGTON TOWER★ 119.9 (CTAF) 0 239.3	GND CON 121.9 348.6



ELEV 32	D	TDZE 31
---------	----------	---------



WILMINGTON, NORTH CAROLINA
Amdt 3C 17AUG17

3000 ILUXY 	SEHWK 1700		IRULE 1700 4 NM Holding Pattern	
	*LNAV only. 	*1.4 NM to RW35 RW35	1700	1700
CATEGORY	A	B	C	D
LPV DA		242/24	211 (300-½)	
LNAV/VNAV DA		426/45	395 (400-¾)	
LNAV MDA	500/24	469 (500-½)	500/50	469 (500-1)
CIRCLING	560-1	528 (600-1)	720-2 688 (700-2)	920-3 888 (900-3)

34°16'N-77°54'W

RNAV (GPS) RWY 35

SE-2, 20 FEB 2025 to 20 MAR 2025