

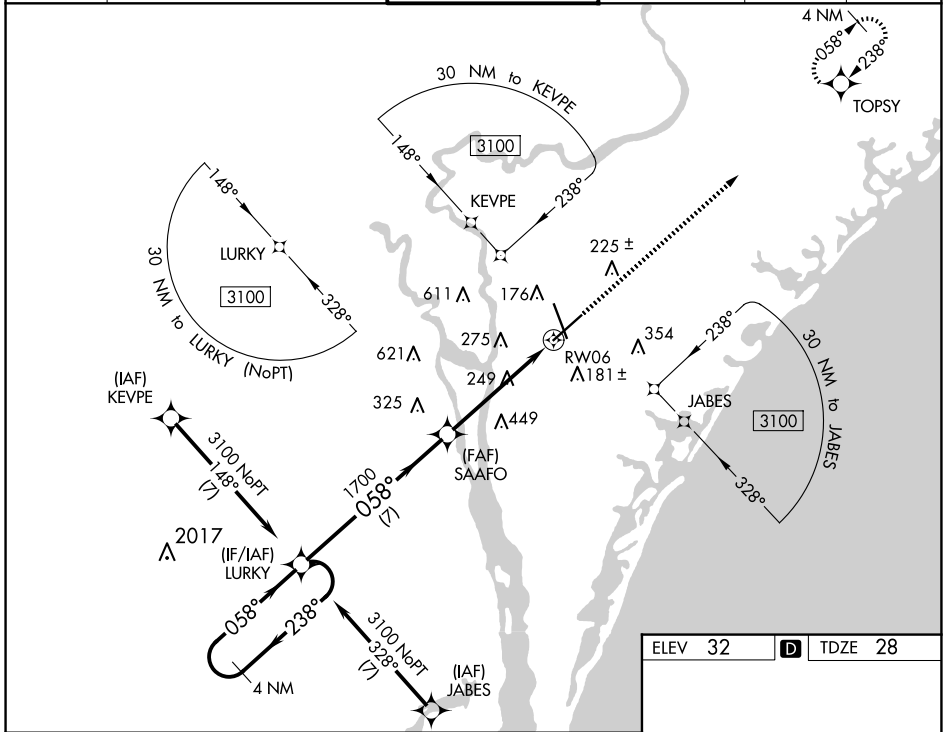
WAAS CH 86599 W06A	APP CRS 058°	Rwy Idg 8016 TDZE 28 Apt Elev 32
--	------------------------	---

RNAV (GPS) RWY 6

WILMINGTON INTL (ILM)

<p>⚠ For uncompensated Baro-VNAV systems, LNAV/VNAV NA below -7°C (20°F) or above 54°C (130°F). DME/DME RNP-0.3 NA.</p>	<p>MISSED APPROACH: Climb to 2000 direct TOPSY and hold.</p>
--	--

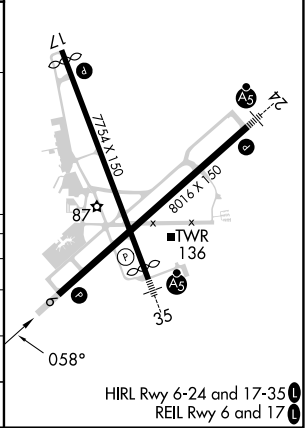
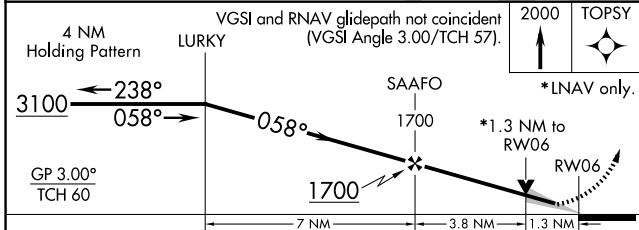
<p>ATIS 124.975</p>	<p>WILMINGTON APP CON★ 118.25 284.65 (164°-343°) 135.75 317.425 (344°-163°)</p>	<p>WILMINGTON TOWER★ 119.9 (CTAF) 0 239.3</p>	<p>GND CON 121.9 348.6</p>	<p>CLNC DEL 120.875</p>	<p>UNICOM 122.95</p>
--------------------------------	---	---	---------------------------------------	------------------------------------	---------------------------------



SE-2, 20 FEB 2025 to 20 MAR 2025

SE-2, 20 FEB 2025 to 20 MAR 2025

ELEV 32	D TDZE 28
----------------	-------------------------



CATEGORY	A	B	C	D
LPV DA		228/40	200 (200-¾)	
LNAV/VNAV DA		434/60	406 (500-1½)	
LNAV MDA	500/55	472 (500-1)	500-1¾	472 (500-1¾)
C CIRCLING	560-1	528 (600-1)	720-2 688 (700-2)	920-3 888 (900-3)