

(MAD.DPK3) 23334

AL-460 (FAA)

# DEER PARK THREE ARRIVAL

WINDSOR LOCKS, CONNECTICUT

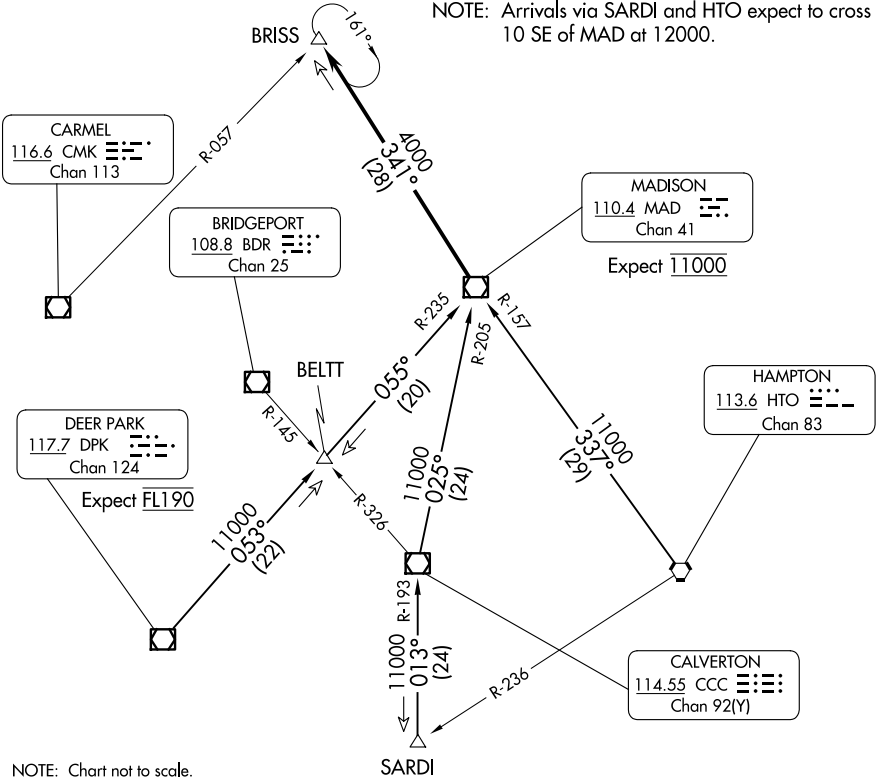
BRADLEY APP CON  
123.95 290.55 (061-240)  
125.35 281.5 (241-060)  
BDL D-ATIS  
118.15

WESTFIELD-BARNES  
RGNL

WESTOVER ARB/  
METROPOLITAN

BRADLEY  
INTL

NOTE: Applicable to arrivals 11000 and above.  
NOTE: RADAR required.  
NOTE: Arrivals via SARDI and HTO expect to cross  
10 SE of MAD at 12000.



NOTE: Chart not to scale.

## ARRIVAL ROUTE DESCRIPTION

**DEER PARK TRANSITION (DPK.DPK3):** From over DPK VOR/DME on DPK R-053 to BELTT INT, then on MAD R-235 to MAD VOR/DME. Thence . . . .

**HAMPTON TRANSITION (HTO.DPK3):** From over HTO VORTAC on HTO R-337 and MAD R-157 to MAD VOR/DME. Thence . . . .

**SARDI TRANSITION (SARDI.DPK3):** From over SARDI INT on CCC R-193 to CCC VOR/DME, then on CCC R-025 and MAD R-205 to MAD VOR/DME. Thence . . . .

From over MAD VOR/DME on MAD R-341 to BRISS INT/MAD 28 DME.  
Expect radar vectors to final approach course prior to BRISS INT.

# DEER PARK THREE ARRIVAL

WINDSOR LOCKS, CONNECTICUT

(MAD.DPK3) 25OCT07

NE-1, 20 FEB 2025 to 20 MAR 2025

NE-1, 20 FEB 2025 to 20 MAR 2025