

WINK, TEXAS

AL-461 (FAA)

24361

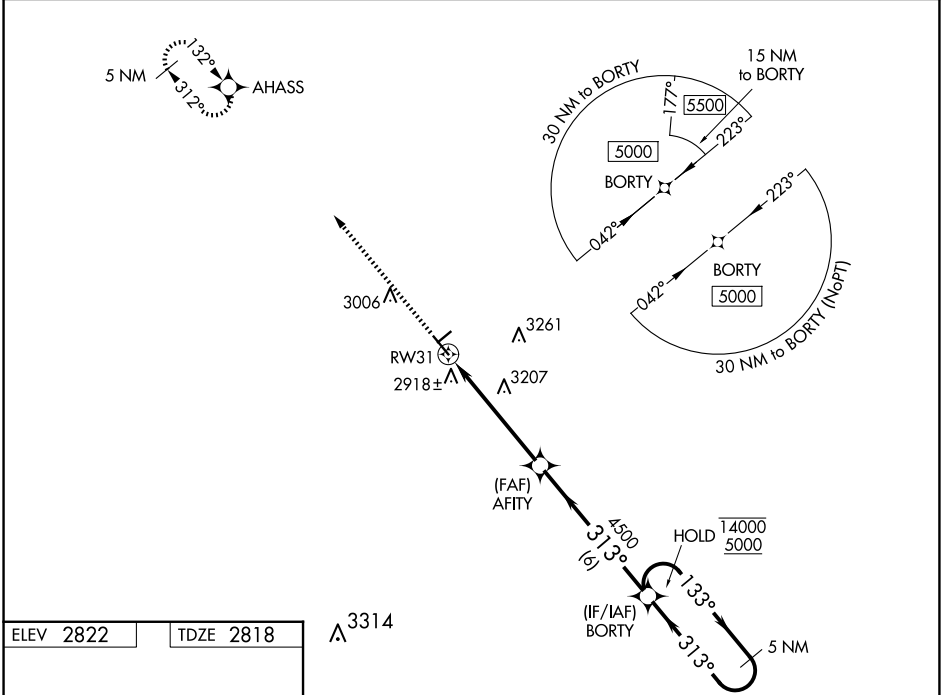
WAAS CH 56233 W31A	APP CRS 313°	Rwy Idg TDZE Apt Elev	5003 2818 2822
--	------------------------	-----------------------------	---

RNAV (GPS) RWY 31

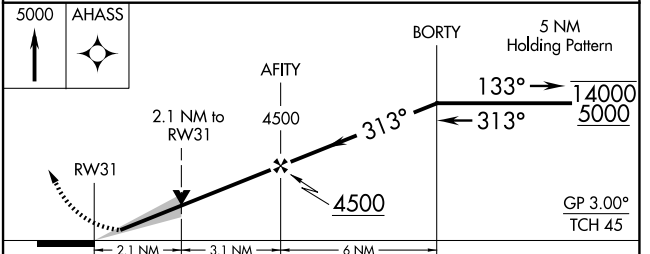
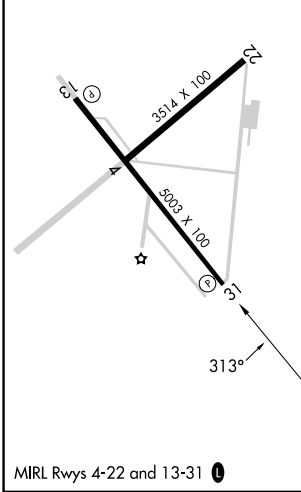
WINKLER COUNTY (INK)

RNP APCH - GPS.		MISSED APPROACH: Climb to 5000 direct AHASS and hold.
For uncompensated Baro-VNAV systems, LNAV/VNAV NA below -20°C or above 54°C.		

ASOS 118.325	FORT WORTH CENTER 133.1 298.95	UNICOM 123.0 (CTAF) 0
------------------------	--	---------------------------------



ELEV 2822	TDZE 2818
-----------	-----------



CATEGORY	A	B	C	D
LPV DA	3068- ³ / ₄	250 (300- ³ / ₄)		NA
LNAV/VNAV DA	3253-1 ¹ / ₄	435 (500-1 ¹ / ₄)		NA
LNAV MDA	3520-1	702 (700-1)	3520-2 702 (700-2)	NA
CIRCLING	3520-1	698 (700-1)	3580-2 ¹ / ₄ 758 (800-2 ¹ / ₄)	NA

WINK, TEXAS
Amdt 1B 14JUL22

31°47'N-103°12'W

RNAV (GPS) RWY 31

SC-3, 20 FEB 2025 to 20 MAR 2025

SC-3, 20 FEB 2025 to 20 MAR 2025