

WINK, TEXAS

AL-461 (FAA)

25051

VORTAC INK 112.1 Chan 58	APP CRS 150°	Rwy Idg TDZE Apt Elev	5003 2822 2822
--	------------------------	-----------------------------	---

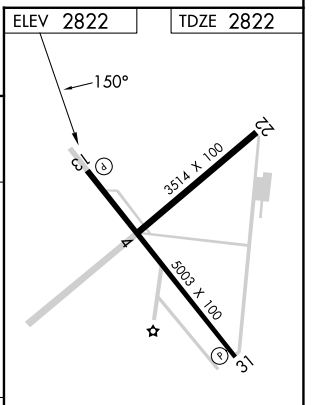
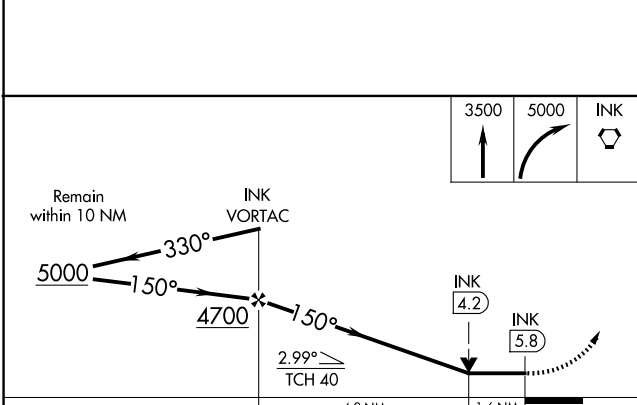
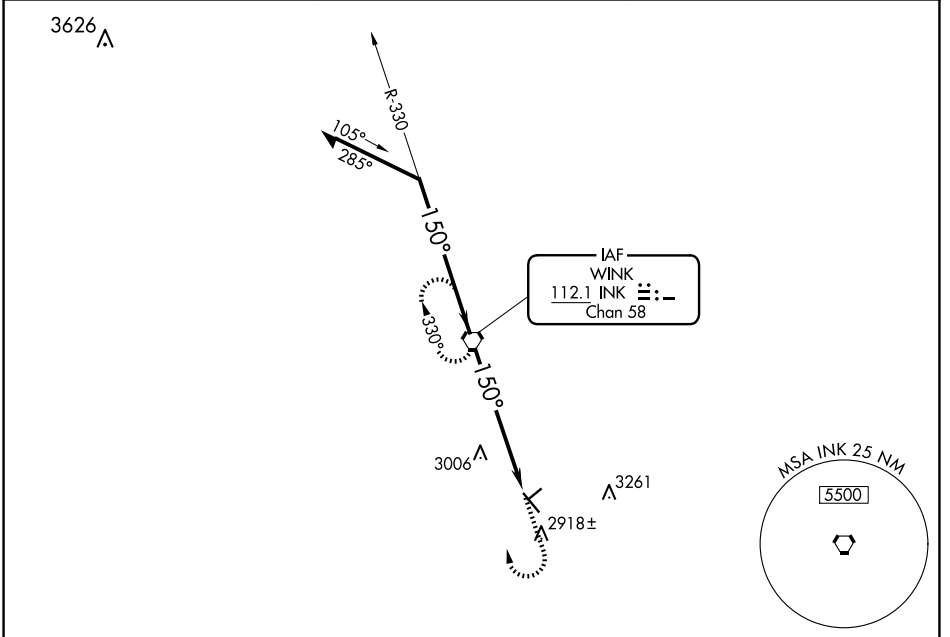
VOR RWY 13

WINKLER COUNTY (INK)

▲
▲

MISSED APPROACH: Climb to 3500 then climbing right turn to 5000 direct INK VORTAC and hold, continue climb-in-hold to 5000.

ASOS 118.325	FORT WORTH CENTER 133.1 298.95	UNICOM 123.0 (CTAF) 0
------------------------	--	---------------------------------



CATEGORY	A	B	C	D
S-13	3340-1	518 (600-1)	3340-1 3/8 518 (600-1 3/8)	NA
C CIRCLING	3340-1	518 (600-1)	3580-2 1/4 758 (800-2 1/4)	NA

MIRL Rwy 4-22 and 13-31 0

FAF to MAP 5.8 NM

Knots	60	90	120	150	180
Min:Sec	5:48	3:52	2:54	2:19	1:56

WINK, TEXAS
Amdt 10B 20FEB25

31°47'N-103°12'W

WINKLER COUNTY (INK)

VOR RWY 13

SC-3, 20 FEB 2025 to 20 MAR 2025

SC-3, 20 FEB 2025 to 20 MAR 2025