

LOC I-INT 110.3	APP CRS 332°	Rwy Idg 6655
		TDZE 941
		Apt Elev 969

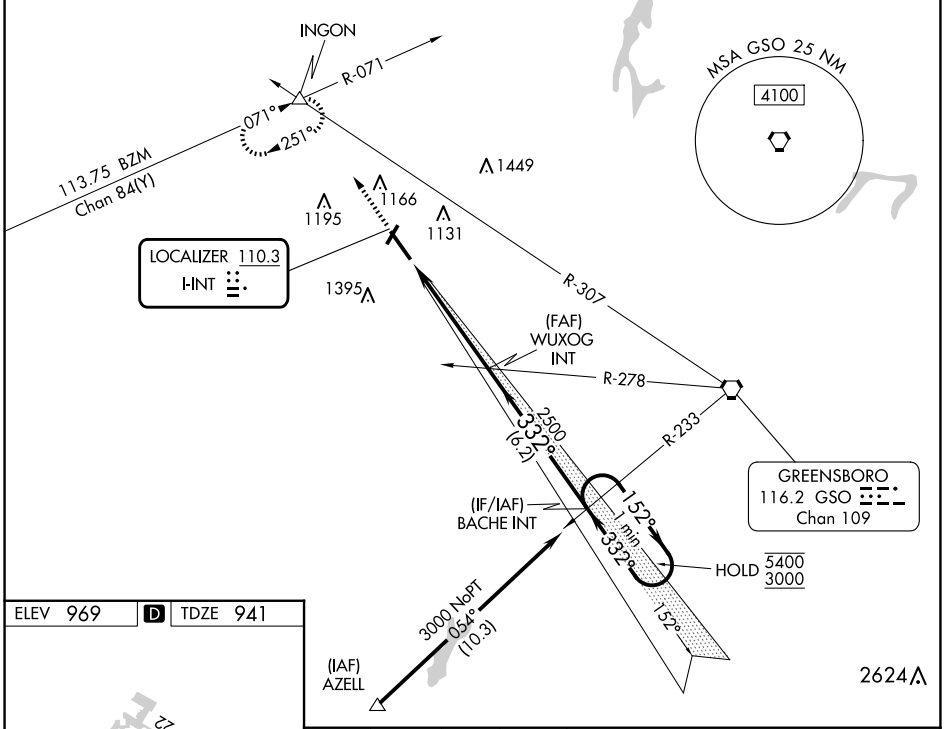
ILS or LOC RWY 33

SMITH REYNOLDS (INT)

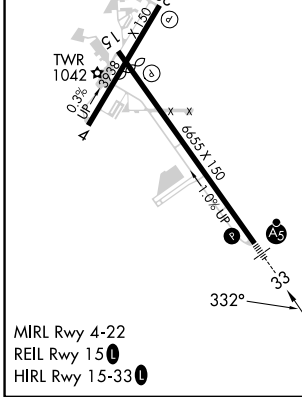
RNP APCH-GPS. From AZELL.
 RADAR required for non-GPS equipped aircraft.
 *RVR 1800 authorized with use of FD or AP or HUD to DA.

MALSR
AS
 MISSED APPROACH: Climb to 1400 then climbing right turn to 3500 on heading 341° and GSO VORTAC R-307 to INCON INT and hold, continue climb-in-hold to 3500.

ATIS 121.3	GREENSBORO APP CON 124.35 269.225	WINSTON-SALEM TOWER ★ 123.75 (CTAF) 0 257.8	GND CON 128.25	UNICOM 122.95
----------------------	---	---	--------------------------	-------------------------



ELEV 969	D	TDZE 941
----------	----------	----------



MIRL Rwy 4-22
 REIL Rwy 15
 HIRL Rwy 15-33

1400	3500	INGON	One Minute Holding Pattern	
↑	hdg 341°	GSO R-307	WUXOG INT	BACHE INT
RW33		4.8 NM	6.2 NM	
332°		2500	2500	5400
			152°	3000
			332°	
				GS 3.00° TCH 57
CATEGORY	A	B	C	D
S-ILS 33*	1141/24 200 (200-1/2)			
S-LOC 33	1400/24	459 (500-1/2)	1400/45	459 (500-7/8)
CIRCLING	1480-1 511 (600-1)	1580-1 611 (700-1)	1700-2 731 (800-2)	1760-2 1/2 791 (800-2 1/2)

WINSTON SALEM, NORTH CAROLINA
 Amdt 30 05OCT23

36°08'N-80°13'W

ILS or LOC RWY 33

SE-2, 20 FEB 2025 to 20 MAR 2025

SE-2, 20 FEB 2025 to 20 MAR 2025