

VORTAC YKM <b>116.0</b> Chan 107	APP CRS <b>251°</b>	Rwy Idg TDZE Apt Elev	<b>N/A</b> <b>N/A</b> <b>1099</b>
--	------------------------	-----------------------------	---

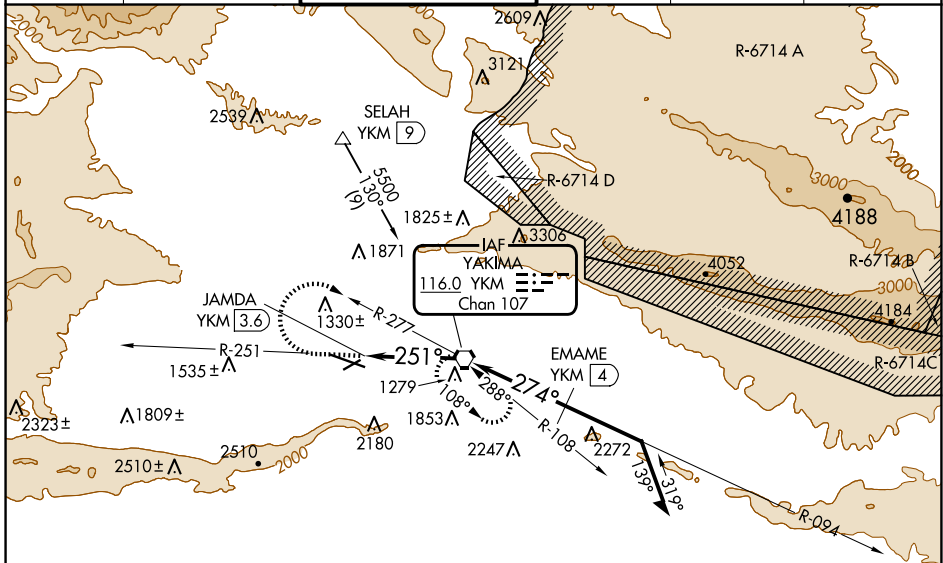
# VOR-A

YAKIMA AIR TRML/MCALLISTER FLD (YKM)

**⚠** DME required.  
**⚠** Circling not authorized south of Rwy 9-27.  
 When local altimeter setting not received, procedure NA.

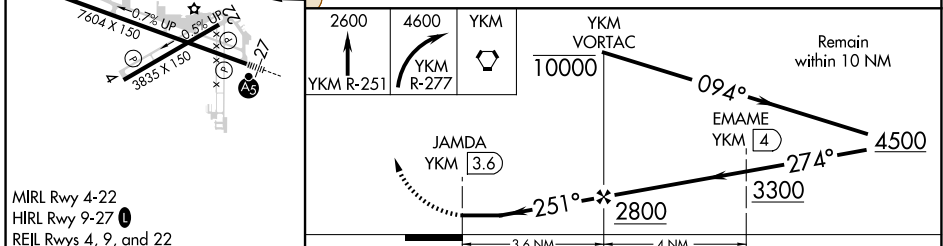
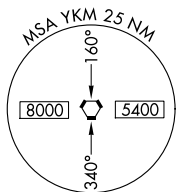
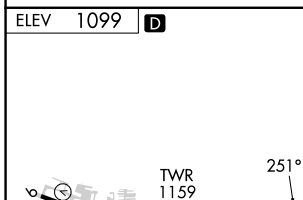
MISSED APPROACH: Climb to 2600 via YKM VORTAC R-251 then climbing right turn to 4600 via YKM VORTAC R-277 to YKM VORTAC and hold, continue climb-in-hold to 4600.

ATIS <b>125.25</b>	SPOKANE APP CON* <b>123.8 263.15</b>	YAKIMA TOWER* <b>133.25 (CTAF) 257.8</b>	GND CON <b>121.9</b>	CLNC DEL <b>121.9</b>	UNICOM <b>122.95</b>
-----------------------	---	---	-------------------------	--------------------------	-------------------------



NW-1, 20 FEB 2025 to 20 MAR 2025

NW-1, 20 FEB 2025 to 20 MAR 2025



MIRL Rwy 4-22  
 HIRL Rwy 9-27  
 REIL Rwys 4, 9, and 22

FAF to MAP 3.6 NM					
Knots	60	90	120	150	180
Min:Sec	3:36	2:24	1:48	1:26	1:12
CIRCLING	1840-1 741 (800-1)	1840-1¼ 741 (800-1¼)	1940-2½ 841 (900-2½)	2280-3 1181 (1200-3)	

YAKIMA, WASHINGTON  
 Amdt 7A 18JUN20

YAKIMA AIR TRML/MCALLISTER FLD (YKM)

46°34'N-120°33'W

# VOR-A