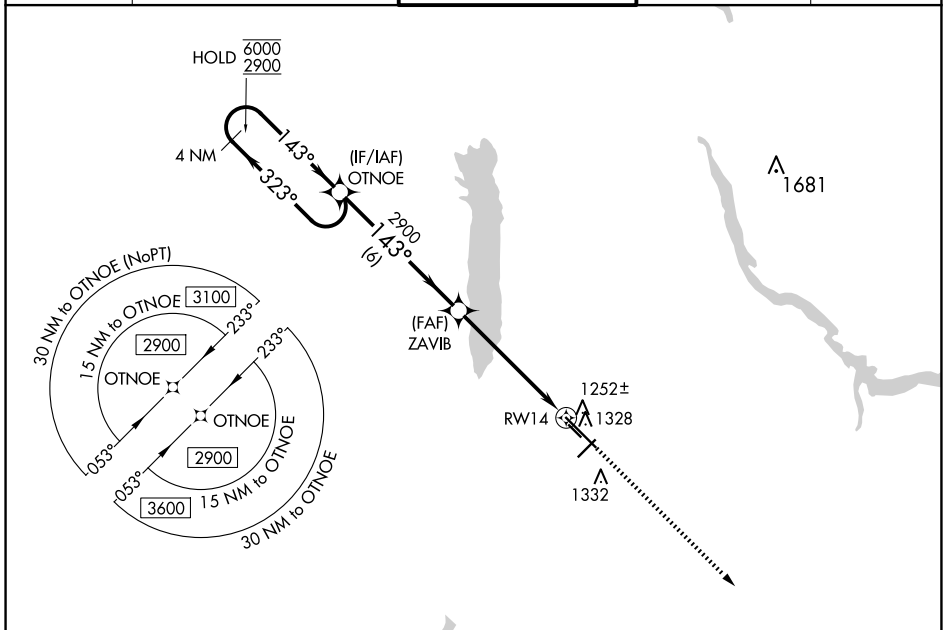


WAAS CH <b>49205</b> <b>W14A</b>	APP CRS <b>143°</b>	Rwy Idg <b>9003</b> TDZE <b>1134</b> Apt Elev <b>1192</b>
--	------------------------	---

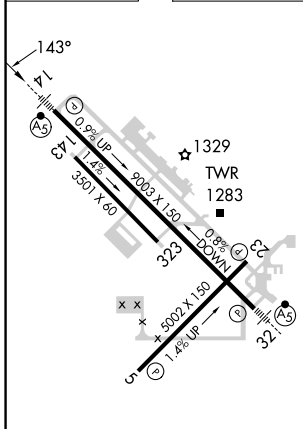
# RNAV (GPS) RWY 14

YOUNGSTOWN/WARREN RGNL (YNG)

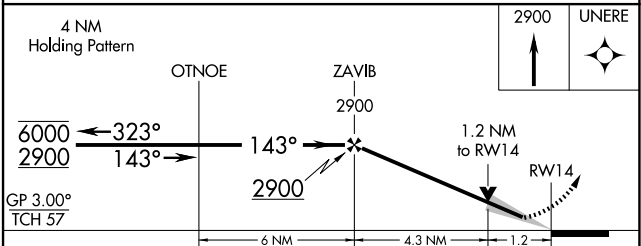
RNP APCH - GPS.		MALSR	MISSED APPROACH: Climb to 2900 direct UNERE and hold.	
▽ For uncompensated Baro-VNAV systems, LNAV/VNAV NA below -18°C or above 54°C. Circling Rwy 5 and 23 NA at night. For inop ALS, increase LNAV/VNAV all Cats visibility to ½ SM.				
ATIS <b>123.75</b>	YOUNGSTOWN APP CON * <b>133.95 322.3</b>	YOUNGSTOWN TOWER <b>119.5 263.0</b>	GND CON <b>121.9 275.8</b>	CLNC DEL <b>118.25</b>



ELEV 1192	<b>D</b>	TDZE 1134
-----------	----------	-----------



HIRL Rwy 14-32  
MIRL Rwy 5-23  
REIL Rwy 5 and 23



GP 3.00° TCH 57				
CATEGORY	A	B	C	D
LPV DA	1334-½		200 (200-½)	
LNAV/VNAV DA	1421-½		287 (300-½)	
LNAV MDA	1540-½	406 (400-½)	1540-⅝	406 (400-⅝)
<b>C</b> CIRCLING	1640-1 448 (500-1)	1660-1 468 (500-1)	1740-1½ 548 (600-1½)	1760-2 568 (600-2)

EC-2, 20 FEB 2025 to 20 MAR 2025

EC-2, 20 FEB 2025 to 20 MAR 2025