

LIDDS THREE DEPARTURE (RNAV)

AL-467 (FAA)

WILLOW RUN (YIP)

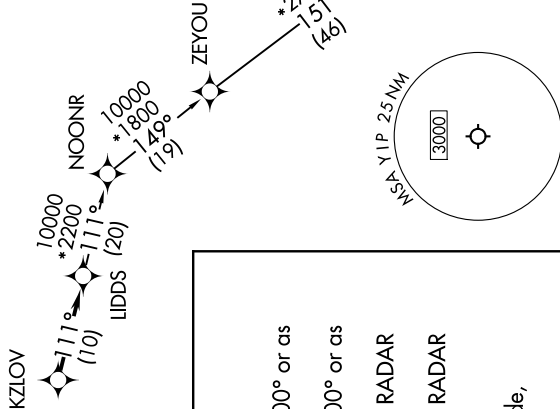
DETROIT, MICHIGAN

EC-1, 20 FEB 2025 to 20 MAR 2025

ATIS
127.425
GND CON
119.975

WILLOW RUN TOWER
125.275 256.9
DETROIT DEP CON
118.95 284.0

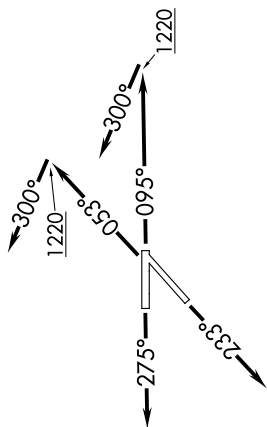
TAKEOFF MINIMUMS:
Rwy 23: Standard.
Rwys 5, 9: Standard with minimum climb of 500' per NM to 1220.
Rwys 27: Standard with minimum climb of 209' per NM to 1000.



NOTE: Chart not to scale.

**TOP ALTITUDE:
ASSIGNED BY ATC**

RNAV 1 - DME/DME/IRU or GPS.
RADAR required.



NOTE: Turbojet departures at/above 10000, maintain 280K until advised by ATC.

DEPARTURE ROUTE DESCRIPTION

TAKEOFF RUNWAY 5: Climb on heading 053° to 1220, then on heading 300° or as assigned by ATC, for RADAR vectors to KZLOV, thence....
TAKEOFF RUNWAY 9: Climb on heading 095° to 1220, then on heading 300° or as assigned by ATC, for RADAR vectors to KZLOV, thence....
TAKEOFF RUNWAY 23: Climb on heading 233° or as assigned by ATC, for RADAR vectors to KZLOV, thence....
TAKEOFF RUNWAY 27: Climb on heading 275° or as assigned by ATC, for RADAR vectors to KZLOV, thence....

...on track 111° to LIDDS, then on (transition). Maintain ATC assigned altitude, expect filed altitude 10 minutes after departure.

GRVY TRANSITION (LIDDS3.GRVY):

LIDDS THREE DEPARTURE (RNAV)

DETROIT, MICHIGAN

WILLOW RUN (YIP)

EC-1, 20 FEB 2025 to 20 MAR 2025