

(ZETTR4.ZETTR) 24137

# ZETTR FOUR DEPARTURE (RNAV)

AL-467 (FAA)

WILLOW RUN (YIP)

DETROIT, MICHIGAN

DETROIT DEP CON  
118.95 284.0  
ATIS  
127.425  
GND CON  
119.975  
WILLOW RUN TOWER  
125.275 256.9

RNAV 1 - DME/DME/IRU or GPS.

RADAR required.

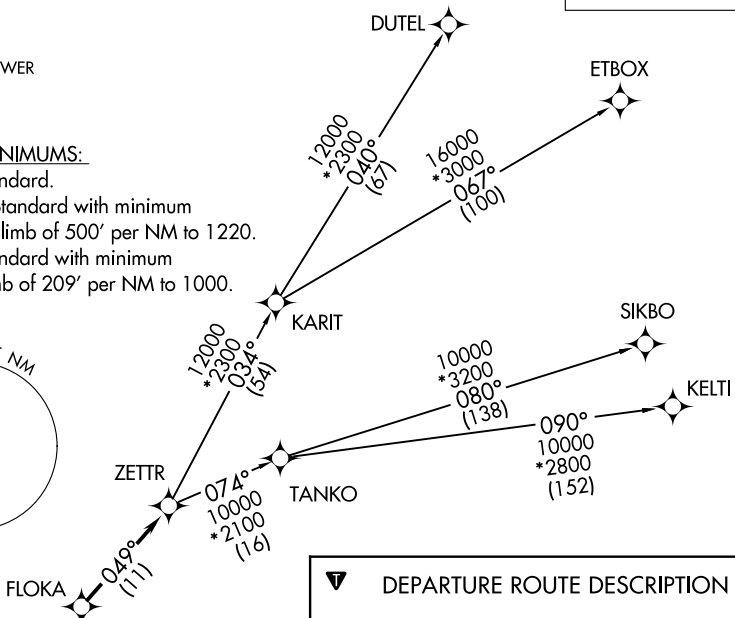
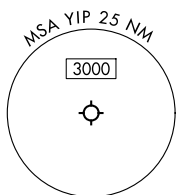
**TOP ALTITUDE:  
ASSIGNED BY ATC**

### TAKEOFF MINIMUMS:

Rwy 23: Standard.

Rwys 5, 9: Standard with minimum  
climb of 500' per NM to 1220.

Rwy 27: Standard with minimum  
climb of 209' per NM to 1000.



### DEPARTURE ROUTE DESCRIPTION

**TAKEOFF RUNWAY 5:** Climb on heading 053° to 1220, then on heading 300° or as assigned by ATC, for RADAR vectors to FLOKA, thence....

**TAKEOFF RUNWAY 9:** Climb on heading 095° to 1220, then on heading 300° or as assigned by ATC, for RADAR vectors to FLOKA, thence....

**TAKEOFF RUNWAY 23:** Climb on heading 233° or as assigned by ATC, for RADAR vectors to FLOKA, thence....

**TAKEOFF RUNWAY 27:** Climb on heading 275° or as assigned by ATC, for RADAR vectors to FLOKA, thence....

....on track 049° to ZETTR, then on (transition). Maintain ATC assigned altitude, expect filed altitude 10 minutes after departure.

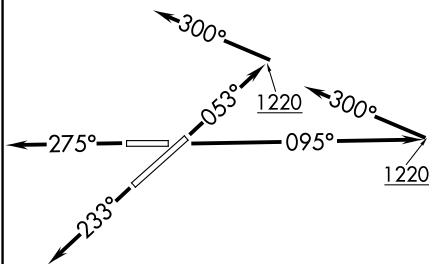
**DUTEL TRANSITION (ZETTR4.DUTEL):**

**ETBOX TRANSITION (ZETTR4.ETBOX):**

**KELTI TRANSITION (ZETTR4.KELTI):**

**SIKBO TRANSITION (ZETTR4.SIKBO):**

**TANKO TRANSITION (ZETTR4.TANKO):**



NOTE: Turbojet departures at/above 10000, maintain 280K until advised by ATC.

NOTE: TANKO Transition: For use by CYYZ area arrivals only, or as assigned by ATC.

NOTE: Chart not to scale.

ZETTR FOUR DEPARTURE (RNAV)  
(ZETTR4.ZETTR) 16MAY24

DETROIT, MICHIGAN  
WILLOW RUN (YIP)

EC-1, 20 FEB 2025 to 20 MAR 2025

EC-1, 20 FEB 2025 to 20 MAR 2025