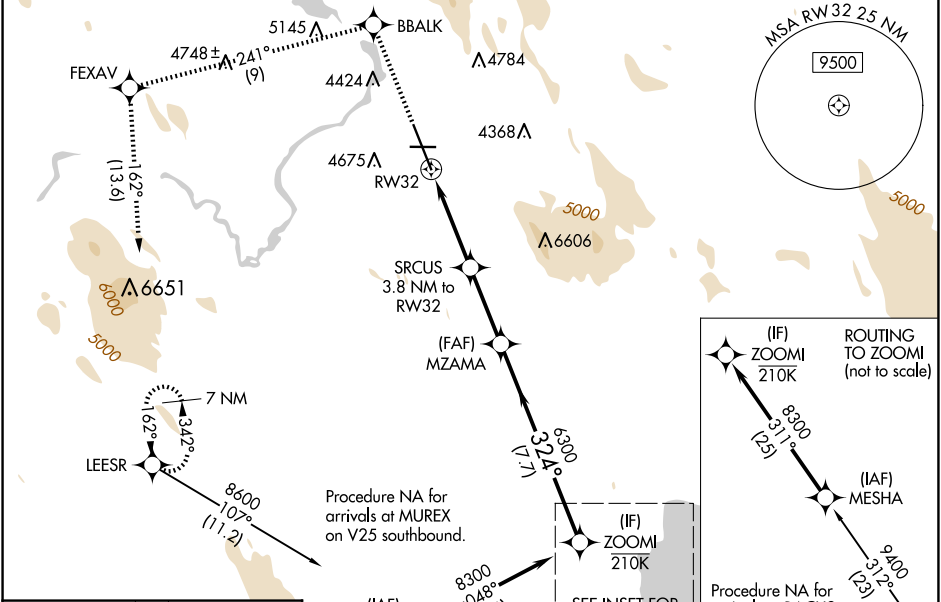


WAAS CH <b>70702</b> <b>W32A</b>	APP CRS <b>324°</b>	Rwy Idg <b>10302</b> TDZE <b>4095</b> Apt Elev <b>4095</b>
--	------------------------	--

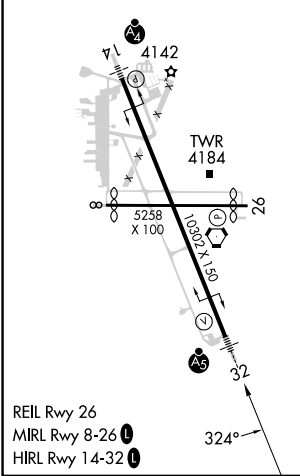
**RNAV (GPS) RWY 32**  
CRATER LAKE/KLAMATH RGNL (L.M.T)

RNP APCH - GPS.	MALSR	MISSED APPROACH: Climb to 8600 direct BBALK and on track 241° to FEXAV and on track 162° to LEESR and hold. *Missed approach requires minimum climb of 235 feet per NM to 6100.
<p>Baro-VNAV NA. Circling NA for Cat D northeast of Rwy 14-32.</p> <p>For inop ALS, increase LPV all Cats visibility to 1½ SM, LPV* (CG 235) all Cats visibility to RVR 4500, LNAV/VNAV all Cats visibility to 1¾ SM, and LNAV Cat C/D visibility to 2½ SM.</p>		

ATIS <b>126.5 263.0</b>	KINGSLEY APP CON* <b>123.675 270.8</b>	KINGSLEY TOWER* <b>133.975 (CTAF) 257.8</b>	GND CON <b>121.9 348.6</b>	UNICOM <b>122.95</b>
----------------------------	---	--	-------------------------------	-------------------------



ELEV 4095	<b>D</b>	TDZE 4095
-----------	----------	-----------



8600	BBALK	tr 241°	FEXAV	tr 162°	LEESR	MZAMA	ZOOMI
						SRCSUS 3.8 NM to RW32	
						2.3 NM to RW32	
						6300	8300
						324°	
						5360	6300
						GP 3.00°	TCH 55
						2.3 NM	1.5 NM
						3 NM	7.7 NM
CATEGORY	A	B	C	D			
LPV DA*	4387/24			292 (300-½)			
LPV DA	4644/60			549 (600-1¼)			
LNAV/VNAV DA	4705-1½			610 (700-1½)			
LNAV MDA	4900/24	4900/40	4900-1⅞	805 (900-1½)			
	805 (900-½)	805 (900-¾)					
<b>C</b> CIRCLING	4900-1	4980-1¼	5420-3	5680-3			
	805 (900-1)	885 (900-1¼)	1325 (1400-3)	1585 (1600-3)			

NW-1, 20 FEB 2025 to 20 MAR 2025

NW-1, 20 FEB 2025 to 20 MAR 2025