

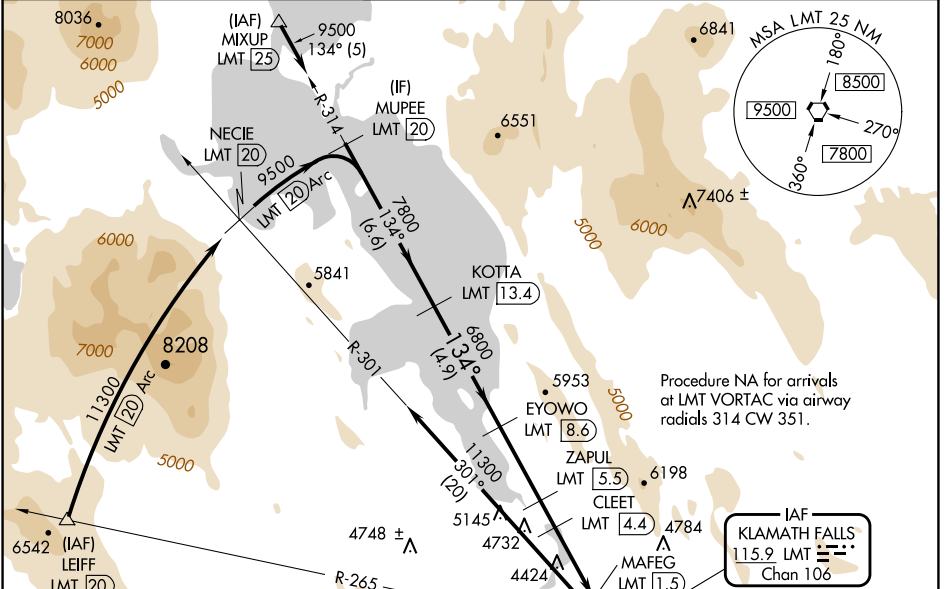
VORTAC LMT <b>115.9</b> Chan <b>106</b>	APP CRS <b>134°</b>	Rwy ldg <b>10302</b> TDZE <b>4091</b> Apt Elev <b>4095</b>
---	------------------------	--

# VOR/DME or TACAN RWY 14

CRATER LAKE/KLAMATH RGNL (LMT)

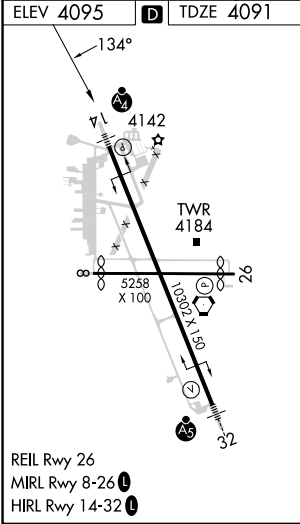
<b>⚠</b> Circling NA for Cat D and E east of Rwy 14-32. Inop table does not apply to Cats B and C. Helicopter visibility reduction below 3/4 SM NA.	MALSF 	MISSED APPROACH: Climb to 5000 then climbing right turn to 9400 via heading 180° and LMT VORTAC R-164 to MUREX/ LMT 17 DME and hold, continue climb-in-hold to 9400.
---	-----------	--

ATIS <b>126.5 263.0</b>	KINGSLEY APP CON* <b>123.675 270.8</b>	KINGSLEY TOWER* <b>133.975 (CTAF) 257.8</b>	GND CON <b>121.9 348.6</b>	UNICOM <b>122.95</b>
----------------------------	---	--	-------------------------------	-------------------------

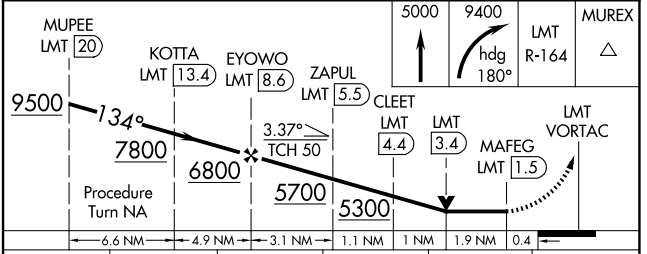
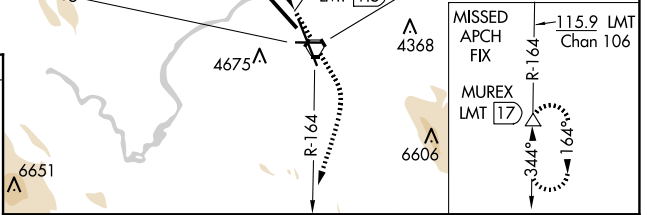


Procedure NA for arrivals at LMT VORTAC via airway radials 314 CW 351.

ELEV 4095	<b>D</b>	TDZE 4091
-----------	----------	-----------



REIL Rwy 26  
MIRL Rwy 8-26  
HIRL Rwy 14-32



CATEGORY	A	B	C	D	E
S-14	4860-3/4 769 (800-3/4)	4860-1 1/4 769 (800-2 1/4)	4860-2 1/4 769 (800-2 1/4)	4860-2 1/2 769 (800-2 1/2)	4860-2 3/4 769 (800-2 1/4)
<b>C</b> CIRCLING	4880-1 785 (800-1)	4980-1 1/4 885 (900-1 1/4)	5420-3 1325 (1400-3)	5660-3 1565 (1600-3)	5700-3 1605 (1700-3)

NW-1, 20 FEB 2025 to 20 MAR 2025

NW-1, 20 FEB 2025 to 20 MAR 2025