

RNAV (RNP) Z RWY 30

TRI-CITIES (PSC)

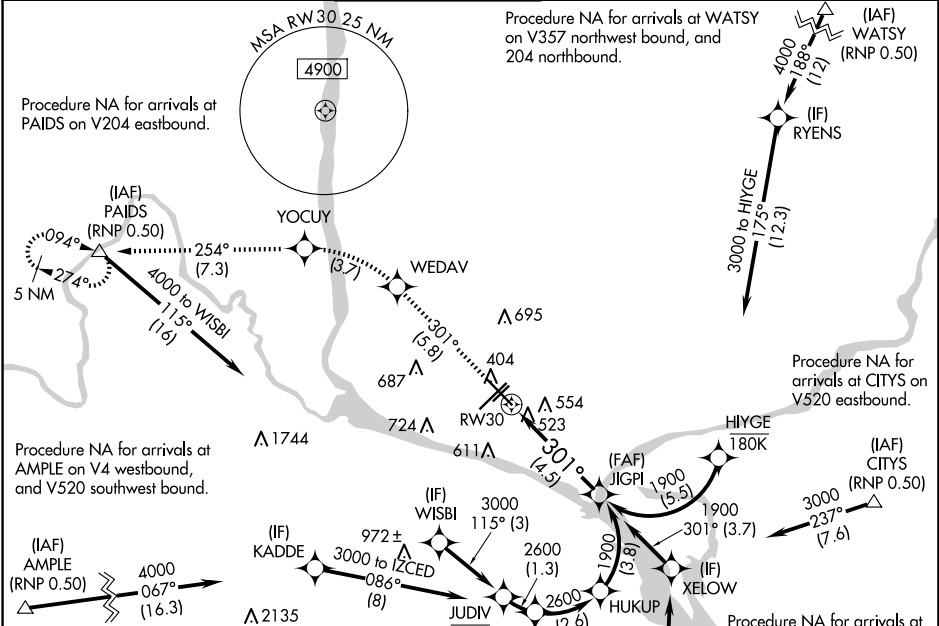
APP CRS	Rwy Idg	7504
301°	TDZE	405
	Apt Elev	410

▼ For uncompensated Baro-VNAV systems, procedure NA below -14°C (7°F) or above 54°C (130°F). RF required. GPS required. For inoperative ODALS, increase RNP 0.11 visibility all Cats to 1¼ mile, and increase RNP 0.30 visibility all Cats to 1½ mile.



MISSED APPROACH: Climb to 5200 on track 301° to WEDAV, left turn to YOUCY, and on track 254° to PAIDS and hold.

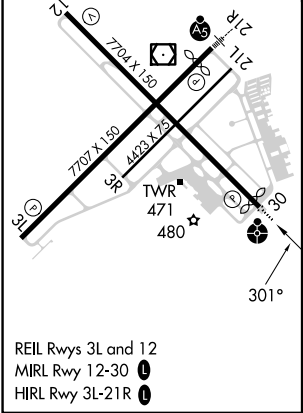
ATIS 125.65	SPOKANE APP CON* 128.75 377.2	TRI-CITIES TOWER* 135.3 (CTAF) 0 323.3	GND CON 121.8	CLNC DEL 120.0	UNICOM 122.95
-----------------------	---	---	-------------------------	--------------------------	-------------------------



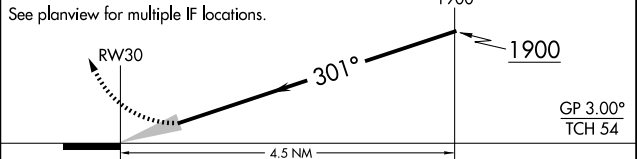
NW-1, 20 FEB 2025 to 20 MAR 2025

NW-1, 20 FEB 2025 to 20 MAR 2025

ELEV	410	D	TDZE	405
------	------------	----------	------	------------



5200 tr 301° WEDAV	YOUCY	tr 254° PAIDS	JIGPI 1900
--------------------------	-------	------------------	---------------



CATEGORY	A	B	C	D
RNP 0.11 DA		778-1⅞	373 (400-1⅞)	
RNP 0.30 DA		834-1¼	429 (500-1¼)	

AUTHORIZATION REQUIRED