

WAAS CH 58006 W12A	APP CRS 121°	Rwy Idg 7504 TDZE 402 Apt Elev 410
---------------------------------	------------------------	---

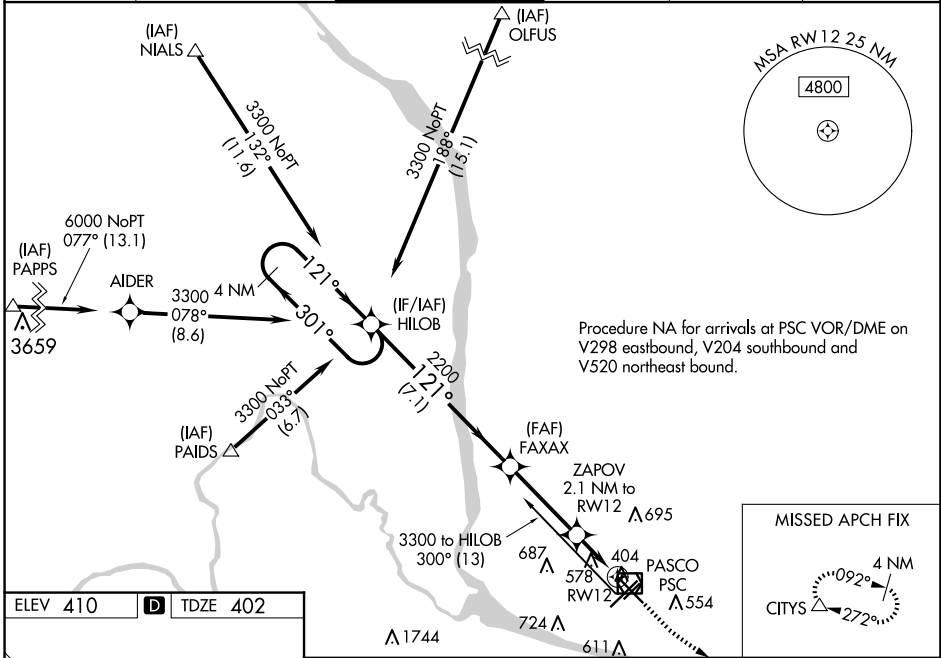
RNAV (GPS) Y RWY 12

TRI-CITIES (PSC)

⚠ Baro-VNAV NA when using Hermiston altimeter setting. For uncompensated Baro-VNAV systems, LNAV/VNAV NA below -14°C (7°F) or above 54°C (130°F). DME/DME RNP-0.3 NA. VDP NA with Hermiston altimeter setting. When local altimeter setting not received, use Hermiston altimeter setting; increase all DA 95 feet and all MDA 100 feet. Increase LPV all Cats visibilities ½ mile; LNAV/VNAV all Cats visibilities ⅓ mile; increase LNAV and Circling Cats C and D visibility ¼ mile.

MISSED APPROACH:
Climb to 900 then climbing left turn to 3200 direct CITYS and hold.

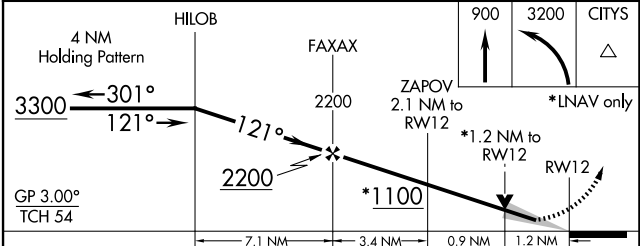
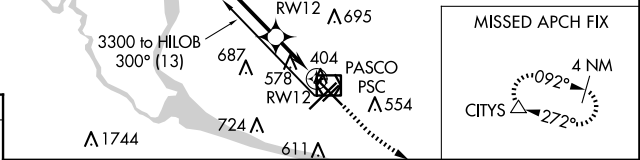
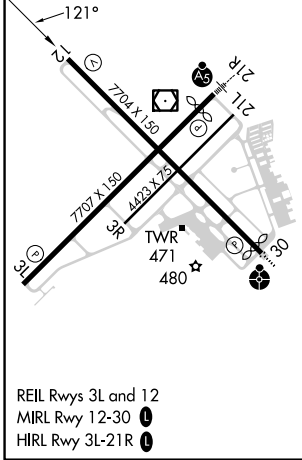
ATIS 125.65	SPOKANE APP CON * 128.75 377.2	TRI-CITIES TOWER * 135.3 (CTAF) 0 323.3	GND CON 121.8	CLNC DEL 120.0	UNICOM 122.95
-----------------------	--	---	-------------------------	--------------------------	-------------------------



NW-1, 20 FEB 2025 to 20 MAR 2025

NW-1, 20 FEB 2025 to 20 MAR 2025

ELEV 410	D	TDZE 402
----------	----------	----------



CATEGORY	A	B	C	D
LPV DA		602-¾	200 (200-¾)	
LNAV/VNAV DA		755-1½	353 (400-1½)	
LNAV MDA	840-1	438 (500-1)	840-1¾	438 (500-1¾)
C CIRCLING	880-1 470 (500-1)	940-1 530 (600-1)	1040-1¾ 630 (700-1¾)	1100-2¼ 690 (700-2¼)