

WAAS CH 40303 W21A	APP CRS 211°	Rwy Idg 7110 TDZE 404 Apt Elev 410
--	------------------------	---

RNAV (GPS) Y RWY 21R

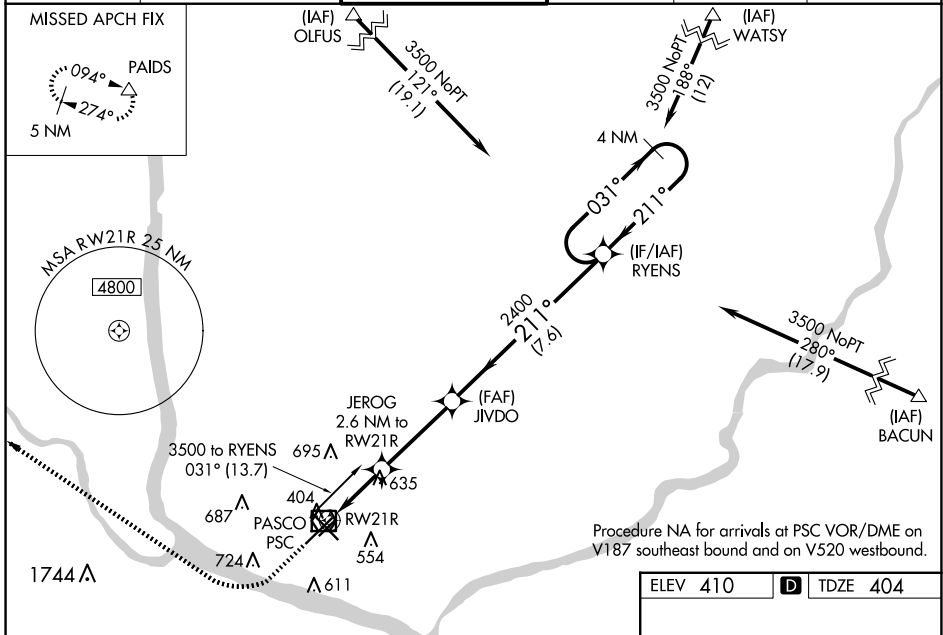
TRI-CITIES (PSC)

⚠ Baro-VNAV NA when using Hermiston altimeter setting. For uncompensated Baro-VNAV systems, LNAV/VNAV NA below -1.4°C (7°F) or above 54°C (130°F).
⚠ DME/DME RNP-0.3 NA. VDP NA with Hermiston altimeter setting. When local altimeter setting not received, use Hermiston altimeter setting and increase all DA 95 feet and all MDA 100 feet; increase LNAV/VNAV all Cats visibility 3/8 mile; LNAV Cat C and D visibility 1/2 mile and Circling Cat C and D visibility 1/4 mile.
 # RVR 1800 authorized with use of FD or AP or HUD to DA, NA when using Hermiston altimeter setting.

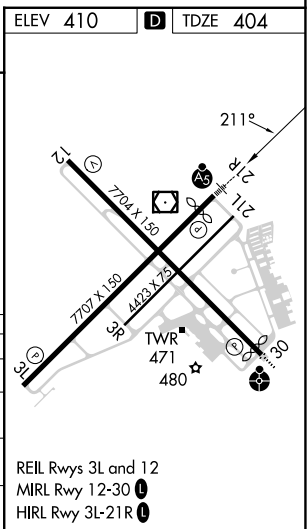
MALSR

MISSED APPROACH:
 Climb to 1100 then climbing right turn to 5200 direct PAIDS and hold, continue climb-in-hold to 5200.

ATIS 125.65	SPOKANE APP CON* 128.75 377.2	TRI-CITIES TOWER* 135.3 (CTAF) 323.3	GND CON 121.8	CLNC DEL 120.0	UNICOM 122.95
-----------------------	---	--	-------------------------	--------------------------	-------------------------



1100	5200	PAIDS				
*LNAV only			RYENS			
RW21R			JIVDO	4 NM Holding Pattern		
*1.5 NM to RW21R			2400	031° → 3500		
1280*			2400	← 211°		
1.5 NM			1.1 NM	3.5 NM	7.6 NM	GP 3.00° TCH 55
CATEGORY	A	B	C	D		
LPV DA#	604/24		200 (200-1/2)			
LNAV/VNAV DA	844/51		440 (500-1)			
LNAV MDA	940/24 536 (600-1/2)		940/55 536 (600-1)			
C CIRCLING	940-1 530 (600-1)		1040-1 3/4 630 (700-1 3/4)		1100-2 1/4 690 (700-2 1/4)	



NW-1, 20 FEB 2025 to 20 MAR 2025

NW-1, 20 FEB 2025 to 20 MAR 2025