

WAAS CH 86605 W30A	APP CRS 301°	Rwy Idg TDZE Apt Elev	7504 405 410
--	------------------------	-----------------------------	---

RNAV (GPS) Y RWY 30

TRI-CITIES (PSC)

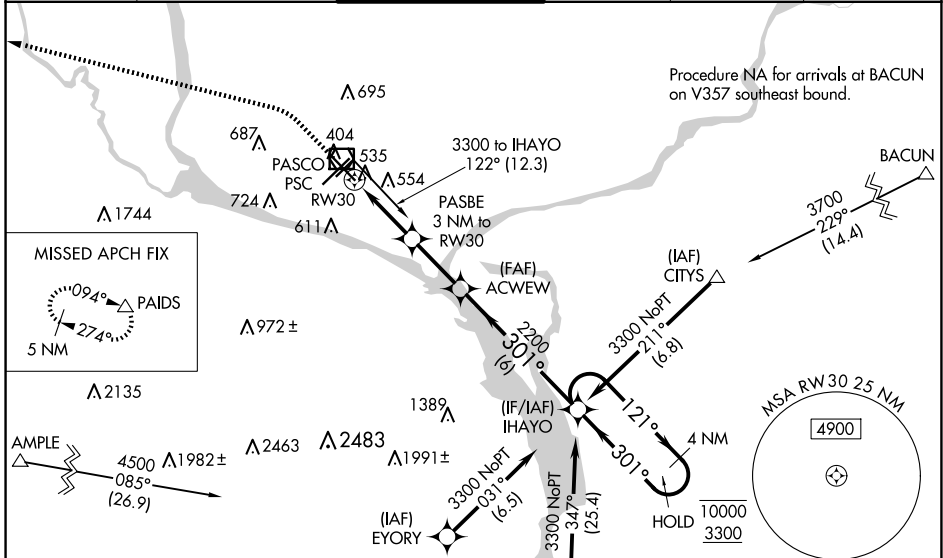
RNP APCH.

▼ Baro-VNAV and VDP NA when using Hermiston altimeter setting. Rwy 30 helicopter visibility reduction below 3/4 SM NA. For uncompensated Baro-VNAV systems, LNAV/VNAV NA below -14°C or above 54°C. When local altimeter setting not received, use Hermiston altimeter setting; increase all DA 95 feet and all MDA 100 feet. Increase LPV and LNAV/VNAV all Cats visibilities 1/4 mile; increase LNAV and Circling Cats C and D visibility 1/4 mile.

▲ MISSED APPROACH: Climb to 900 then climbing left turn to 5200 direct PAIDS and hold, continue climb-in-hold to 5200.

ODALS

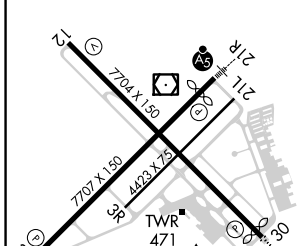
ATIS 125.65	SPOKANE APP CON* 128.75 377.2	TRI-CITIES TOWER* 135.3 (CTAF) 0 323.3	GND CON 121.8	CLNC DEL 120.0	UNICOM 122.95
-----------------------	---	--	-------------------------	--------------------------	-------------------------



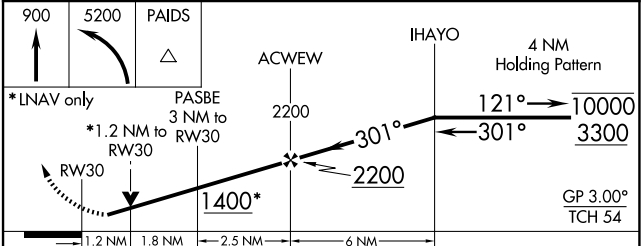
NW-1, 20 FEB 2025 to 20 MAR 2025

NW-1, 20 FEB 2025 to 20 MAR 2025

ELEV 410	D	TDZE 405
----------	----------	----------



REIL Rwy 3L and 12
MIRL Rwy 12-30
HIRL Rwy 3L-21R



CATEGORY	A	B	C	D
LPV DA		655-3/4	250 (300-3/4)	
LNAV/VNAV DA		749-1	344 (400-1)	
LNAV MDA	840-3/4	435 (500-3/4)	840-1 1/8	435 (500-1 1/8)
C CIRCLING	880-1 470 (500-1)	940-1 530 (600-1)	1040-1 3/4 630 (700-1 3/4)	1100-2 1/4 690 (700-2 1/4)