

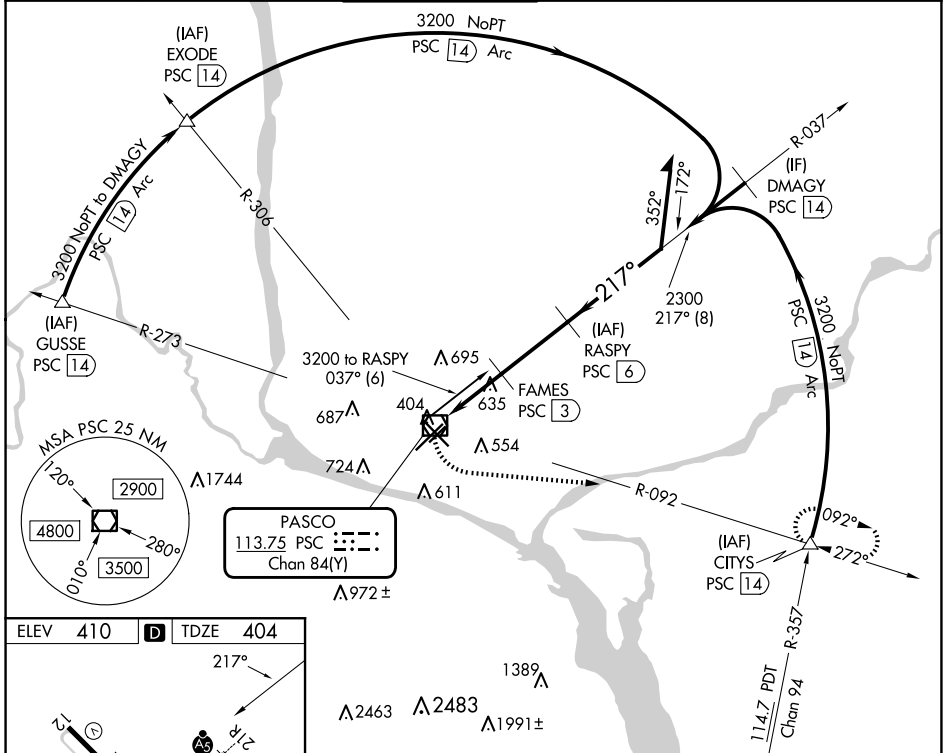
VOR/DME PSC 113.75 Chan 84(Y)	APP CRS 217°	Rwy Idg 7110 TDZE 404 Apt Elev 410
---	------------------------	---

VOR RWY 21R

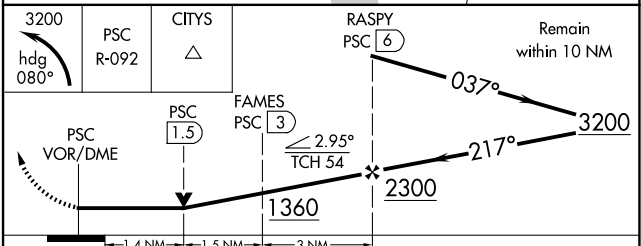
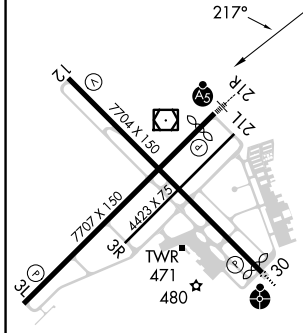
TRI-CITIES (PSC)

DME required.		MALSR 	MISSED APPROACH: Climbing left turn to 3200 on heading 080° and PSC VOR/DME R-092 PSC VOR/DME to CITYS INT/PSC 14 DME and hold.
VDP NA when using Hermiston altimeter setting. When local altimeter setting not received, use Hermiston altimeter setting and increase all MDA 100 feet and increase S-21R Cat C/D visibility 3/8 SM and Circling Cat C/D visibility 1/4 SM. For inop ALS when using Hermiston altimeter setting, increase Cat C/D visibility to 1 3/4 SM.			

ATIS 125.65	SPOKANE APP CON * 128.75 377.2	TRI-CITIES TOWER * 135.3 (CTAF) 323.3	GND CON 121.8	CLNC DEL 120.0	UNICOM 122.95
-----------------------	--	---	-------------------------	--------------------------	-------------------------



ELEV 410	D	TDZE 404
----------	----------	----------



CATEGORY	A	B	C	D
S-21R	940/24	536 (600-1/2)	940/55	536 (600-1)
CIRCLING	940-1	530 (600-1)	1040-1 3/4 630 (700-1 3/4)	1100-2 1/4 690 (700-2 1/4)

PASCO, WASHINGTON
Amdt 7A 05DEC19

46°16'N-119°07'W

TRI-CITIES (PSC) VOR RWY 21R

NW-1, 20 FEB 2025 to 20 MAR 2025

NW-1, 20 FEB 2025 to 20 MAR 2025