

LOC/DME I-ALI 109.3 Chan 30	APP CRS 308°	Rwy Idg 5997 TDZE 174 Apt Elev 178
---	------------------------	---

LOC/DME RWY 31

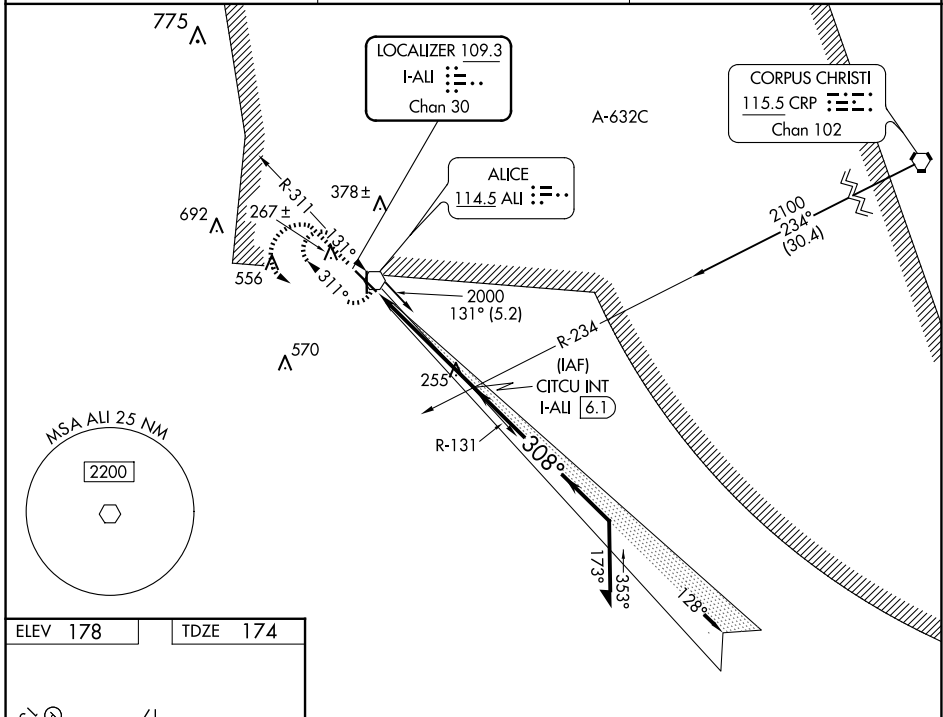
ALICE INTL (ALI)

RADAR required for procedure entry from Corpus Christi CRP VORTAC.

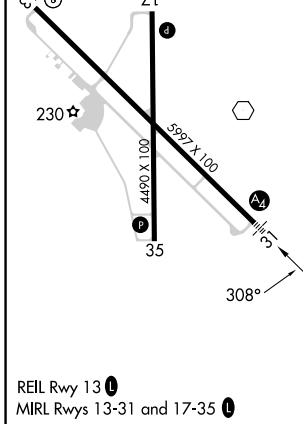
▼ VDP NA when using Nueces County altimeter setting. When local altimeter setting not received, use Nueces County altimeter setting and increase all MDAs 60 feet and S-LOC 31 visibility Cat C/D ¼ SM, and Circling visibility Cat D ¼ SM. For inop ALS when using Nueces County altimeter setting, increase S-31 Cats C, D visibility to 1½ SM.

MALS MISSED APPROACH: Climb to 1500 then climbing left turn to 2000 on direct ALI VOR and hold.

ASOS 119.225	KINGSVILLE APP CON * 119.9 290.45	UNICOM 123.0 (CTAF)
------------------------	---	-------------------------------



ELEV 178	TDZE 174
----------	----------



1500	2000	ALI	2000	CITCU INT I-ALI [6.1]	128°	Remain within 10 NM
VGS and descent angles not coincident.						
		I-ALI [2.1]			308°	2000
		I-ALI [1.2]				1800
						3.04° TCH 47
						1 NM 3.9 NM

SC-3, 20 FEB 2025 to 20 MAR 2025

SC-3, 20 FEB 2025 to 20 MAR 2025