
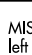


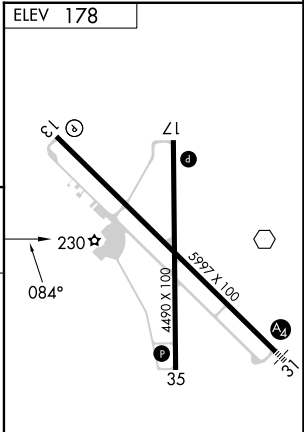
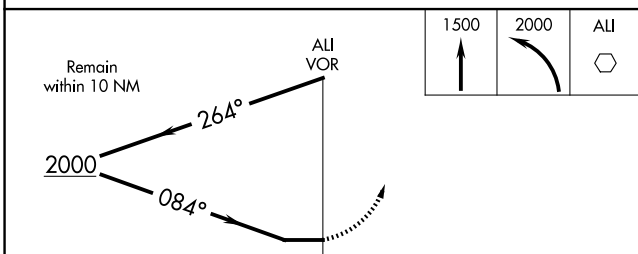
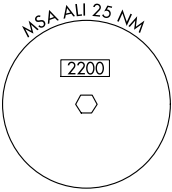
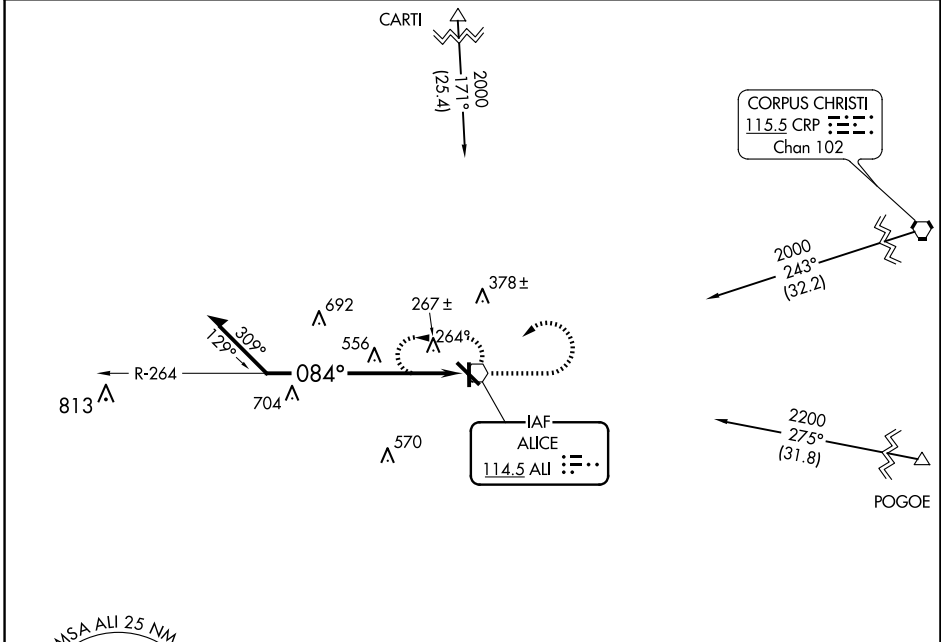
VOR ALI <b>114.5</b>	APP CRS <b>084°</b>	Rwy Idg TDZE Apt Elev	<b>N/A</b> <b>N/A</b> <b>178</b>
-------------------------	------------------------	-----------------------------	--

# VOR-A

ALICE INTL (ALI)

 When local altimeter setting not received, use Nueces County altimeter setting and increase all MDAs 60 feet.
 
 MISSED APPROACH: Climb to 1500 then climbing left turn to 2000 direct ALI VOR and hold.

ASOS <b>119,225</b>	KINGSVILLE APP CON ★ <b>119,9 290,45</b>	UNICOM <b>123.0 (CTAF) ①</b>
------------------------	---	---------------------------------



CATEGORY	A	B	C	D
CIRCLING	1060-1¼	882 (900-1¼)	1060-2¾ 882 (900-2¾)	1060-3 882 (900-3)

SC-3, 20 FEB 2025 to 20 MAR 2025

SC-3, 20 FEB 2025 to 20 MAR 2025