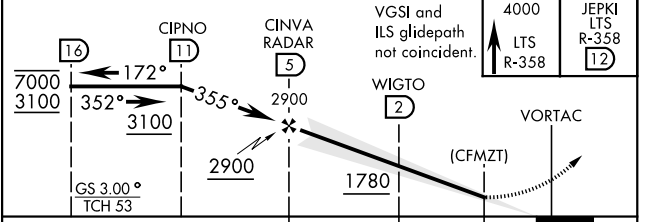
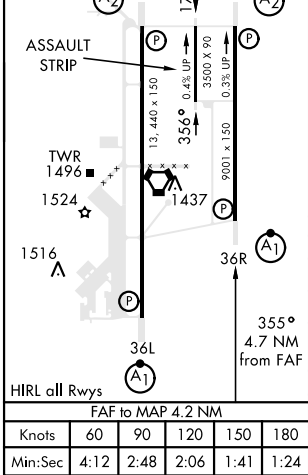
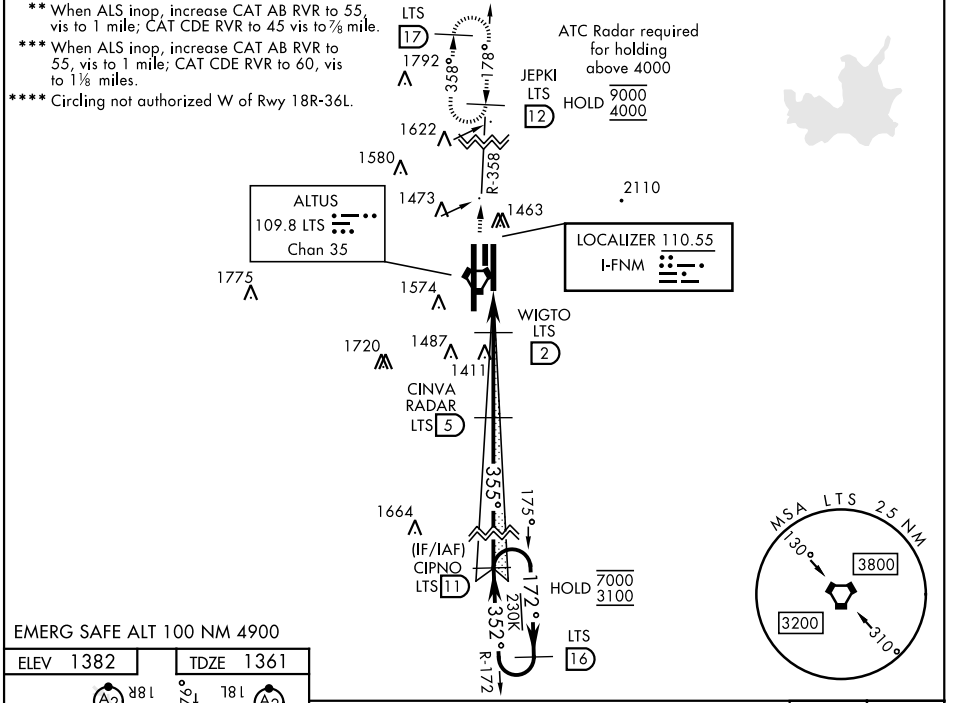


ALTUS, OKLAHOMA

ILS or LOC RWY 36R

LOC I-FNM 110.55	APCH CRS 355°	Rwy Idg TDZE Arprt Elev 9001 1361 1382	AL-482 [USAF]	ALTUS AFB (KLTS)
----------------------------	-------------------------	--	---------------	------------------

DME or RADAR required.					ALSF-1 	MISSED APPROACH: Climb to 4000, intercept LTS VORTAC R-358 to 12 DME (JEPKI) and hold.				
* When ALS inop, increase RVR to 40 and vis to 3/4 mile; RVR 18 authorized with use of FD or AP or HUD to DA. ATIS ★ 109.8 273.5 FORT WORTH CENTER 133.5 350.35 APP CON 125.1 353.7 TOWER ★ 119.65 254.4 GND CON 121.85 275.8 CLNC DEL 120.65 284.7										



CATEGORY	A	B	C	D	E
S-ILS 36R*	1561/24		200	(200-1/2)	
S-LOC 36R**	1680/24		319	(300-1/2)	
C CIRCLING	1780-1 398 (400-1)	1840-1 458 (500-1)	1880-1 1/2 498 (500-1 1/2)	2080-2 1/4 698 (700-2 1/4)	2180-2 3/4 798 (800-2 3/4)
LOCAL ALTIMETER, WITHOUT LAST STEPDOWN FIX					
S-LOC 36R***	1780/24	419 (400-1/2)	1780/40	419	(400-3/4)
C CIRCLING	1780-1 398 (400-1)	1840-1 458 (500-1)	1880-1 1/2 498 (500-1 1/2)	2080-2 1/4 698 (700-2 1/4)	2180-2 3/4 798 (800-2 3/4)

ILS or LOC RWY 36R

SC-1, 20 FEB 2025 to 20 MAR 2025

SC-1, 20 FEB 2025 to 20 MAR 2025