

ALTUS, OKLAHOMA

# ILS or RNAV (GPS) Y RWY 18R

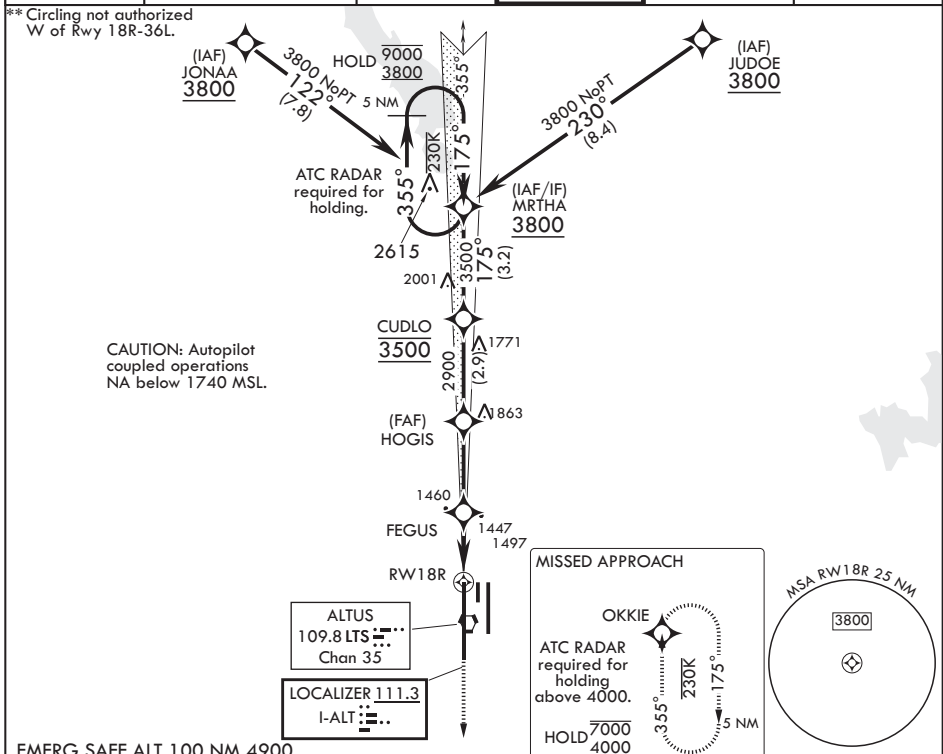
LOC I-ALT <b>111.3</b>	APCH CRS <b>175°</b>	Rwy ldg <b>13,440</b>
		TDZE <b>1378</b>
		Arprt Elev <b>1382</b>

AL-482 (USAF)

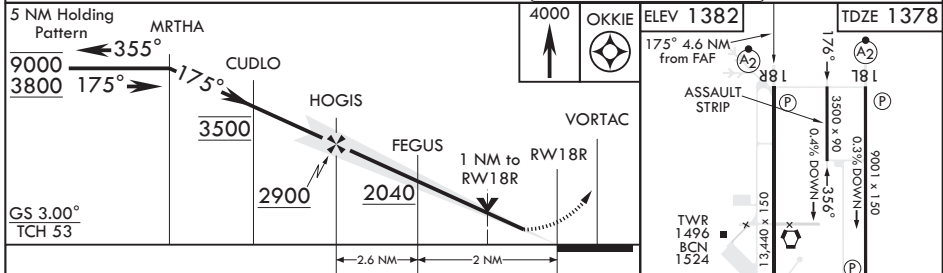
ALTUS AFB (KLTS)

RNP APCH. DME/DME RNP 0.3 NA	SALS	MISSED APPROACH: Climb to 4000 direct OKKIE and hold.
RNAV1 - GPS REQUIRED (for ILS)	A2	
* When ALS inop, increase CAT A8 RVR to 55, vis to 1 mile; CAT CDE RVR to 60, vis to 1 1/8 miles.		

ATIS* <b>109.8 273.5</b>	FORT WORTH CENTER <b>133.5 350.35</b>	APP CON <b>125.1 353.7</b>	TOWER* <b>119.65 254.4</b>	GND CON <b>121.85 275.8</b>	CLNC DEL <b>120.65 284.7</b>
-----------------------------	--	-------------------------------	-------------------------------	--------------------------------	---------------------------------



EMERG SAFE ALT 100 NM 4900



CATEGORY	A	B	C	D	E
S-ILS 18R	1578/40		200	(200-3/4)	
RNAV MDA*	1760/40	382 (400-3/4)	1760/45	382 (400-7/8)	
CIRCLING**	1780-1 398 (400-1)	1840-1 458 (500-1)	1880-1 1/2 498 (500-1 1/2)	2080-2 1/4 698 (700-2 1/4)	2180-2 3/4 798 (800-2 3/4)

ALTUS, OKLAHOMA

34°40'N - 99°16'W

ALTUS AFB (KLTS)

Amdt 2 14JUL22

# ILS or RNAV (GPS) Y RWY 18R

SC-1, 20 FEB 2025 to 20 MAR 2025

SC-1, 20 FEB 2025 to 20 MAR 2025