

ALTUS, OKLAHOMA

ILS or RNAV (GPS) Y RWY 36L

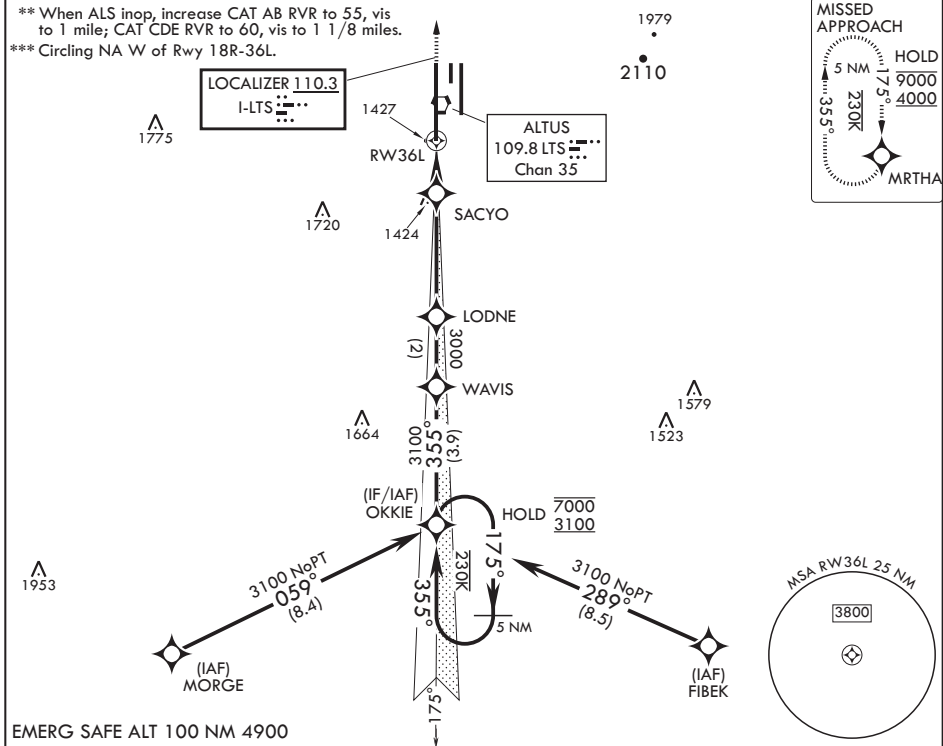
LOC I-LTS 110.3	APCH CRS 355°	Rwy Idg 13,440	TDZE 1354
		Arprt Elev 1382	

AL-482 (USAF)

ALTUS AFB (KLTS)

RNP APCH for LNAV	ALS-1	MISSED APPROACH: Climb to 4000 direct MRTHA and hold.
RNAV1-GPS required for ILS.		
<p>▼ * When ALS inop, increase CAT ABCDE RVR to 40, vis to 3/4 mile; RVR 18 authorized with use of FD or AP or HUD to DA.</p>		

ATIS* 109.8 273.5	FORT WORTH CENTER 133.5 350.35	APP CON 125.1 353.7	TOWER* 119.65 254.4	GND CON 121.85 275.8	CLNC DEL 120.65 284.7
-----------------------------	--	-------------------------------	-------------------------------	--------------------------------	---------------------------------



OKKIE (12)	WAVIS	LODNE	SACYO	VORTAC	
7000 3100	355°	3100	3000	1800	
175°	355°	355°	355°	355°	
3100	3100	3100	3100	3100	
GS 3.00° TCH 55					
			1 NM to RW 36L		
			3.5 NM	1.5 NM	
CATEGORY	A	B	C	D	E
S-ILS 36L*	1554/24		200	(200-½)	
LNAV MDA**	1740/24	386 (400-½)	1740/35	386	(400-¾)
CIRCLING***	1780-1 398 (400-1)	1840-1 458 (500-1)	1880-1½ 498 (500-1½)	2080-2¼ 698 (700-2¼)	2180-2¾ 798 (800-2¾)
					<p>4000 MRTHA</p> <p>ELEV 1382 TDZE 1354</p> <p>ASSAULT STRIP</p> <p>TWR 1496 BCN 1524</p> <p>36R</p> <p>36L</p> <p>HIRL all Rwys</p> <p>355° 5 NM from FAF</p>

ALTUS, OKLAHOMA

34°40'N - 99°16'W

ALTUS AFB (KLTS)

Amdt 3 14JUL22
TERPS

ILS or RNAV (GPS) Y RWY 36L

SC-1, 20 FEB 2025 to 20 MAR 2025

SC-1, 20 FEB 2025 to 20 MAR 2025