

ALTUS, OKLAHOMA

RNAV (GPS)-B

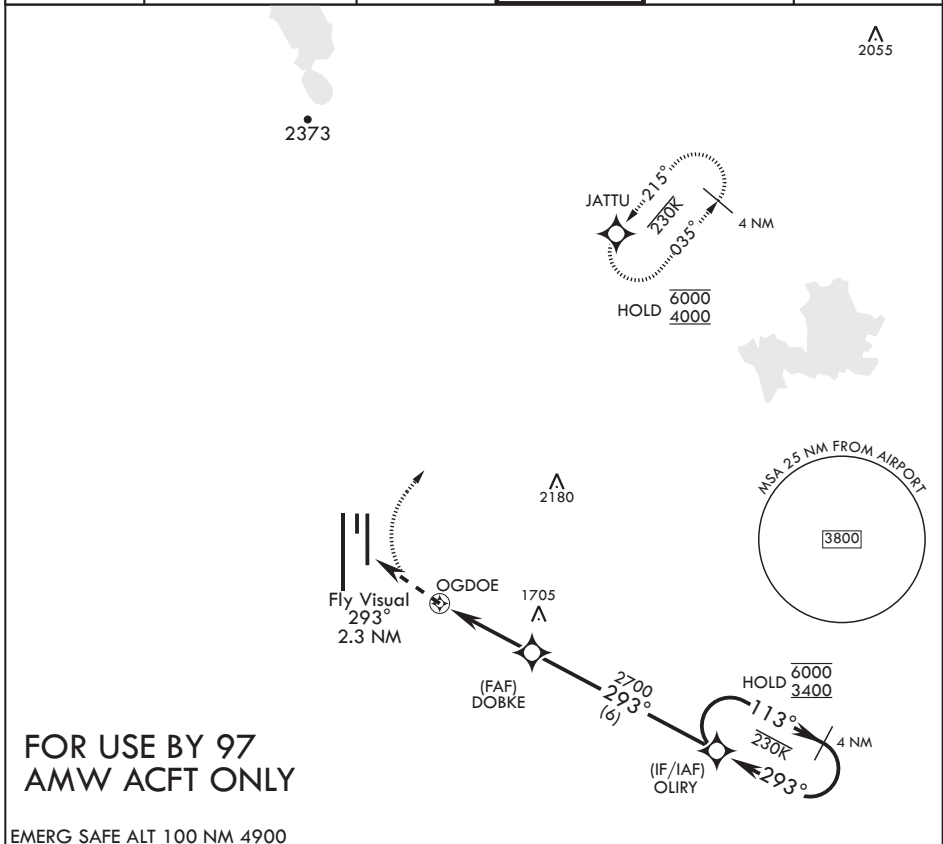
APCH CRS 293°	Rwy Idg TDZE Arprt Elev	N/A N/A 1382
-------------------------	-------------------------------	---------------------------

AL-482 (USAF)

ALTUS AFB (KLTS)

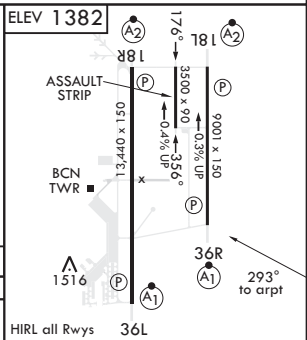
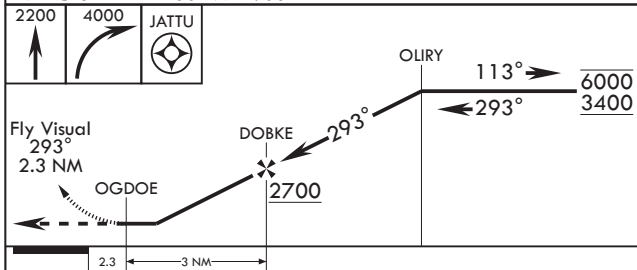
RNP APCH. DME/DME RNP-0.3 NA	MISSED APPROACH: Climb to 2200, then climbing right turn to 4000 direct JATTU and hold.
ATC RADAR required.	

ATIS ★ 109.8 273.5	FORT WORTH CENTER 133.5 350.35	APP CON 125.1 353.7	TOWER ★ 119.65 254.4	GND CON 121.85 275.8	CLNC DEL 120.65 284.7
------------------------------	--	-------------------------------	--------------------------------	--------------------------------	---------------------------------



FOR USE BY 97 AMW ACFT ONLY

EMERG SAFE ALT 100 NM 4900



CATEGORY	A	B	C	D	E
CIRCLING	NA			2080-3 698 (700-3)	2180-3 798 (800-3)

ALTUS, OKLAHOMA

34°40'N - 99°16'W

ALTUS AFB (KLTS)

Amdt 4 14JUL22
TERPS

RNAV (GPS)-B

SC-1, 20 FEB 2025 to 20 MAR 2025

SC-1, 20 FEB 2025 to 20 MAR 2025