

ALTUS, OKLAHOMA

RNAV (RNP) X RWY 18R

APCH CRS 175°	Rwy Idg 13,440
	TDZE 1378
	Arpt Elev 1382

AL-482 (USAF)

ALTUS AFB (KLTS)

RNP AR APCH - RF



MISSED APPROACH: Climb to 4000 on track 175° to OKKIE and hold.

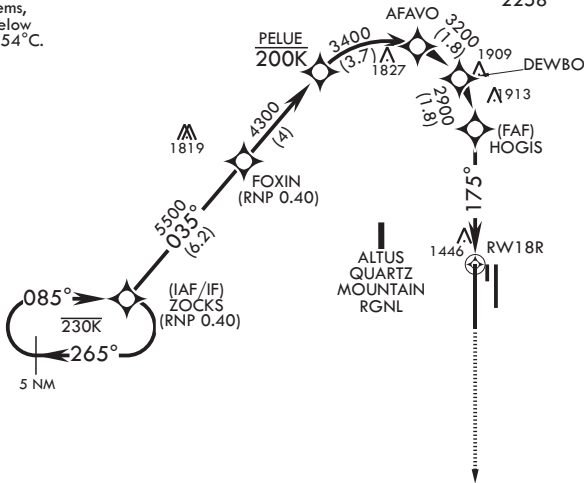
* When ALS inop, increase RVR to 45, vis to 7/8 mile.
** When ALS inop, increase RVR to 60, vis to 1 1/8 miles.

ATIS★ 109.8 273.5	APP CON 125.1 353.7	TOWER★ 119.65 254.4	GND CON 121.85 275.8	CLNC DEL 120.65 284.7
----------------------	------------------------	------------------------	-------------------------	--------------------------

For uncompensated Baro-VNAV systems, procedure NA below -17°C or above 54°C.

Max 200 KIAS until DEWBO

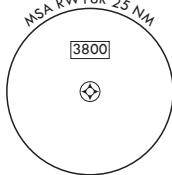
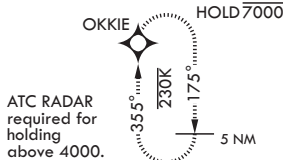
2258



SC-1, 20 FEB 2025 to 20 MAR 2025

**AUTHORIZATION
REQUIRED
FOR USE BY 97
AMW ACFT ONLY**

EMERG SAFE ALT 100 NM 4900



SC-1, 20 FEB 2025 to 20 MAR 2025

ZOCKS 8000 GP 3.00° TCH 53	FOXIN 5500	PELUE 4300	AFAVO 3400	DEWBO 3200	HOGIS 2900	RWY 18R 175° 4.6 NM	4000 tr 175°	OKKIE	ELEV 1382	TDZE 1378	
CATEGORY	A		B		C		D				
RNP 0.10 DA*	1679/40		301		(300-3/4)						
RNP 0.30 DA**	1783/50		405		(500-1)						

ALTUS, OKLAHOMA
Amdt 2 14JUL22

34°40'N - 99°16'W

ALTUS AFB (KLTS)

RNAV (RNP) X RWY 18R