

ALTUS, OKLAHOMA

RNAV (RNP) X RWY 36L

APCH CRS	Rwy Idg	13,440
355°	TDZE	1354
	Arprt Elev	1382

AL-482 (USAF)

ALTUS AFB (KLTS)

RNP AR APCH - RF

ALS-F-1

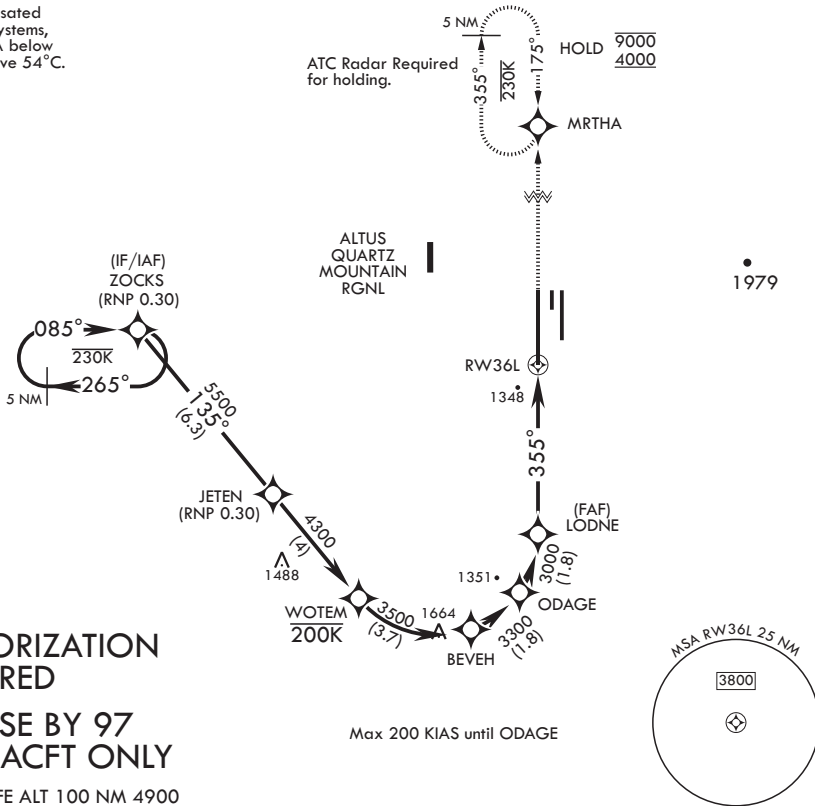
MISSED APPROACH: Climb to 4000 on track 355° to MRTHA and hold.

▼ * When ALS inop, increase RVR to 45, vis to 7/8 mile.
 ** When ALS inop, increase RVR to 55, vis to 1 mile.

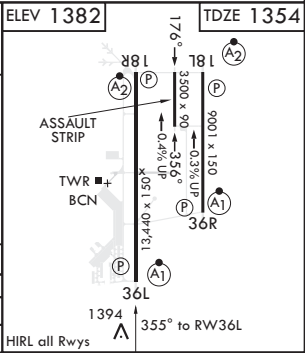
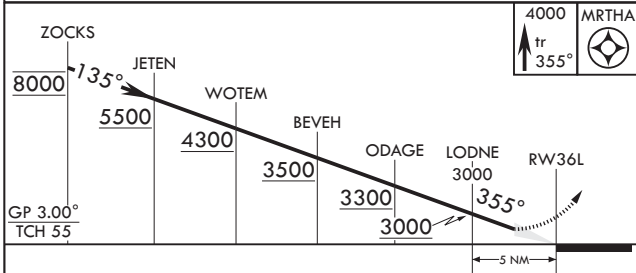


ATIS★ 109.8 273.5	APP CON 125.1 353.7	TOWER★ 119.65 254.4	GND CON 121.85 275.8	CLNC DEL 120.65 284.7
----------------------	------------------------	------------------------	-------------------------	--------------------------

For uncompensated Baro-VNAV systems, procedure NA below -17°C or above 54°C.



AUTHORIZATION REQUIRED
FOR USE BY 97 AMW ACFT ONLY
 EMERG SAFE ALT 100 NM 4900



CATEGORY	A	B	C	D
RNP 0.10 DA*	1646/24	292	(300-1/2)	
RNP 0.30 DA**	1732/35	378	(400-3/8)	

ALTUS, OKLAHOMA
 Amdt 2 14JUL22

34°40'N - 99°16'W

ALTUS AFB (KLTS)

RNAV (RNP) X RWY 36L

SC-1, 20 FEB 2025 to 20 MAR 2025

SC-1, 20 FEB 2025 to 20 MAR 2025